



3 Wayland Road, Grove

Wantage

Simpsons

The Pro**active** Agent

Guide Price **£389,950**

Wayland Road - Grove

Approximate Gross Internal Area = 103.2 sq m / 1111 sq ft

Garage = 17.4 sq m / 187 sq ft

Total = 120.6 sq m / 1298 sq ft

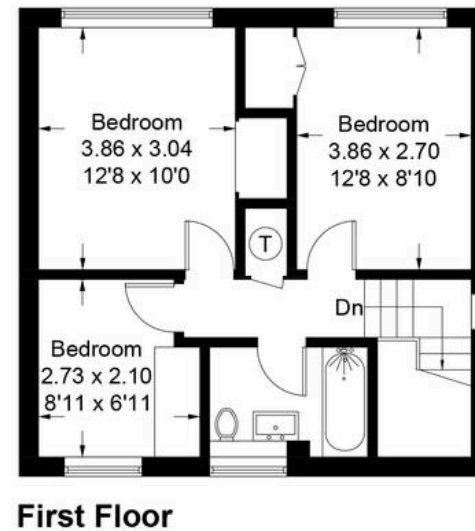
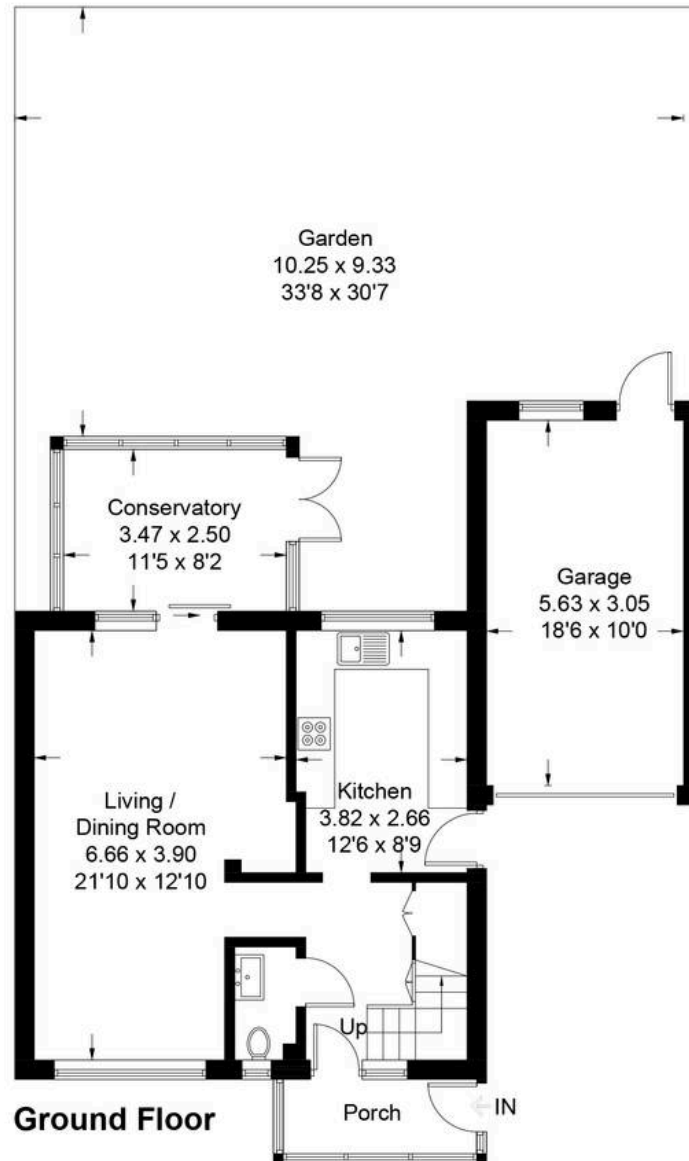


Illustration for identification purposes only, measurements are approximate,
not to scale. Fourlabs.co © (ID1260459)

3 Wayland Road

Grove, Wantage

Located in one of Grove's most desirable areas, this well-presented home offers an excellent balance of comfortable living with the exciting prospect of scope and potential for the future.

Council Tax band: D

Tenure: Freehold

- Well-Presented Three Bedroom Link-Detached Home
- Bright & Spacious Accommodation Throughout
- Three Well-Proportioned Bedrooms
- Ample Driveway Parking



SCAN THE
QR CODE
TO BOOK
YOUR VIEWING

