



10 Waterford Road, Witney





## 10 Waterford Road

Presented in excellent condition throughout is this mid-terrace home located on the popular Madley Park development.

Council Tax band: C

Tenure: Freehold

EPC Energy Efficiency Rating: B

EPC Environmental Impact Rating: C

- Presented in excellent condition throughout is this mid-terrace home located on the popular Madley Park development.
- Versatile accommodation, formerly a three-bedroom home but now converted to two bedrooms.
- Open plan kitchen/dining room with french doors leading out to the rear garden.
- Two double bedrooms both with ensembles.
- Garage and allocated parking.
- Two reception rooms.

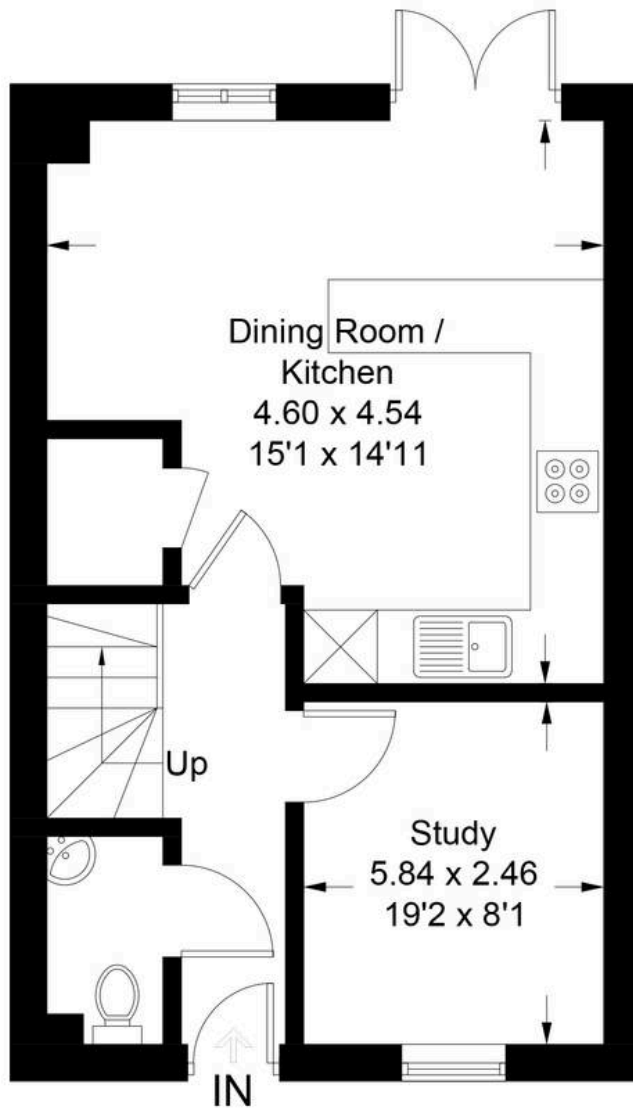




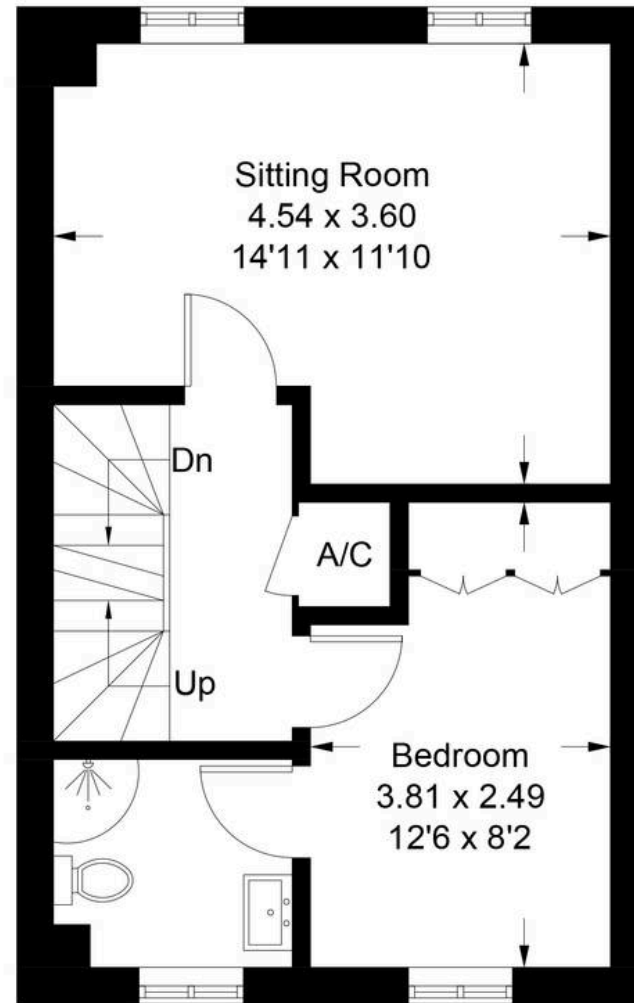


# Waterford Road - Witney

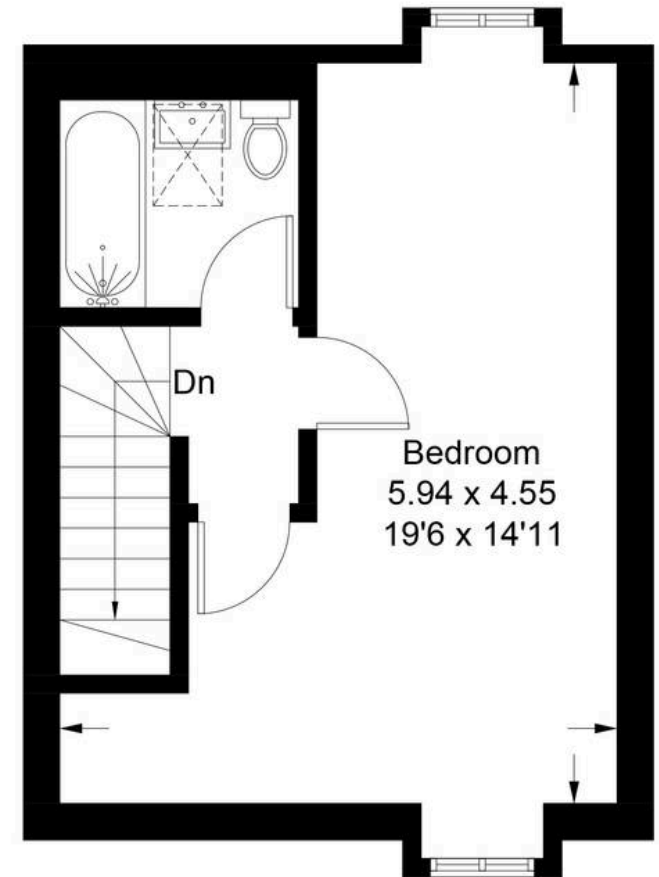
Approximate Gross Internal Area = 97.3 sq m / 1047 sq ft



**Ground Floor**



**First Floor**



**Second Floor**

Illustration for identification purposes only, measurements are approximate,  
not to scale. Fourlabs.co © (ID1249874)





## Simpsons Witney Branch

4 Langdale Court Witney, Oxfordshire - OX28 6AD

01993 835030 • [witney@simpsonsproperty.com](mailto:witney@simpsonsproperty.com) • [www.simpsonsproperty.com/](http://www.simpsonsproperty.com/)