



3 Blenheim Orchard, East Hanney

Wantage

Guide Price **£525,000**

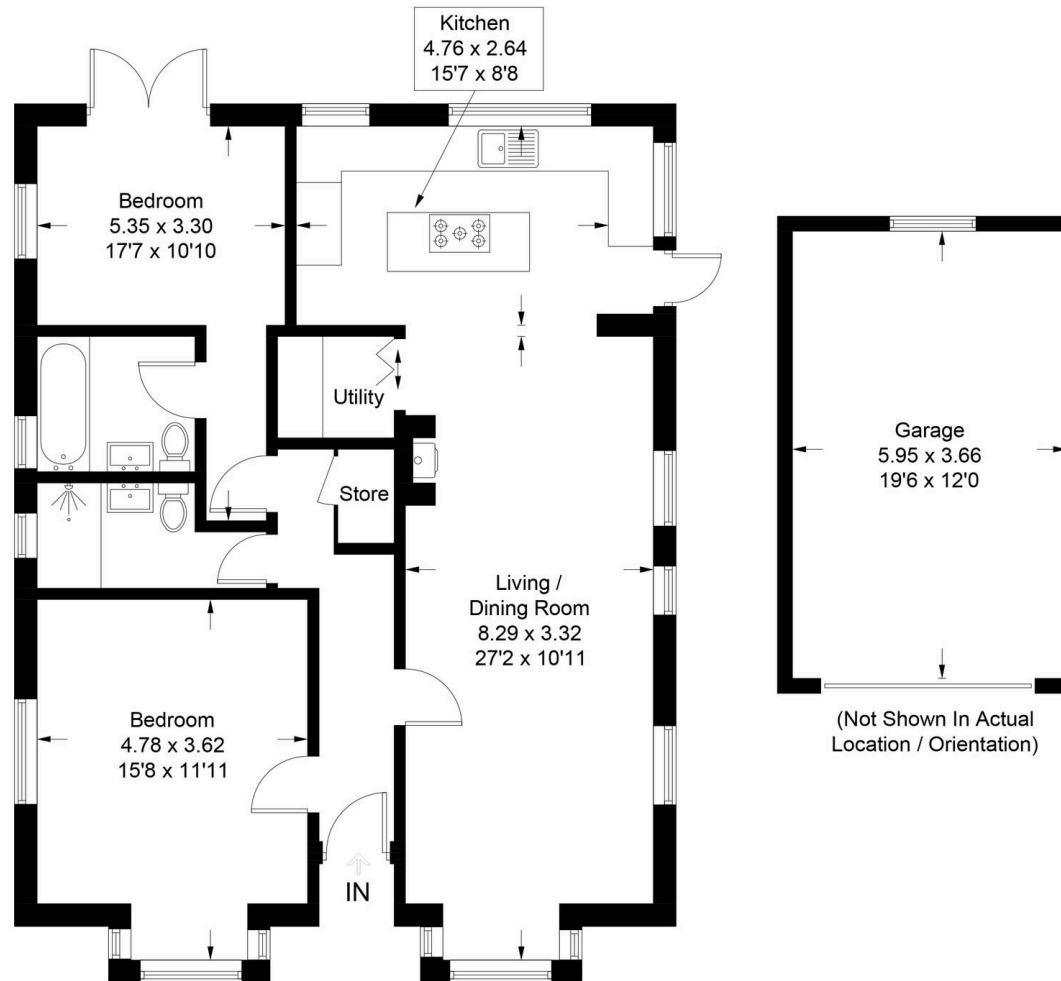
Simpsons
The Pro**active** Agent

Blenheim Orchard - East Hanney

Approximate Gross Internal Area = 86.6 sq m / 932 sq ft

Garage = 21.7 sq m / 233 sq ft

Total = 108.3 sq m / 1165 sq ft



3 Blenheim Orchard

East Hanney, Wantage

A beautifully presented and spacious two bedroom bungalow on a generous plot in the popular Village of East Hanney.

Council Tax band: D

Tenure: Freehold

- Beautifully Presented Bungalow
- Very Generous Plot With Plenty Of Off-Street Parking
- Open-Plan & Spacious Kitchen-Diner



SCAN THE
QR CODE
TO BOOK
YOUR VIEWING



