



33 Poppy Close, Kingston Bagpuize

Abingdon

£415,000

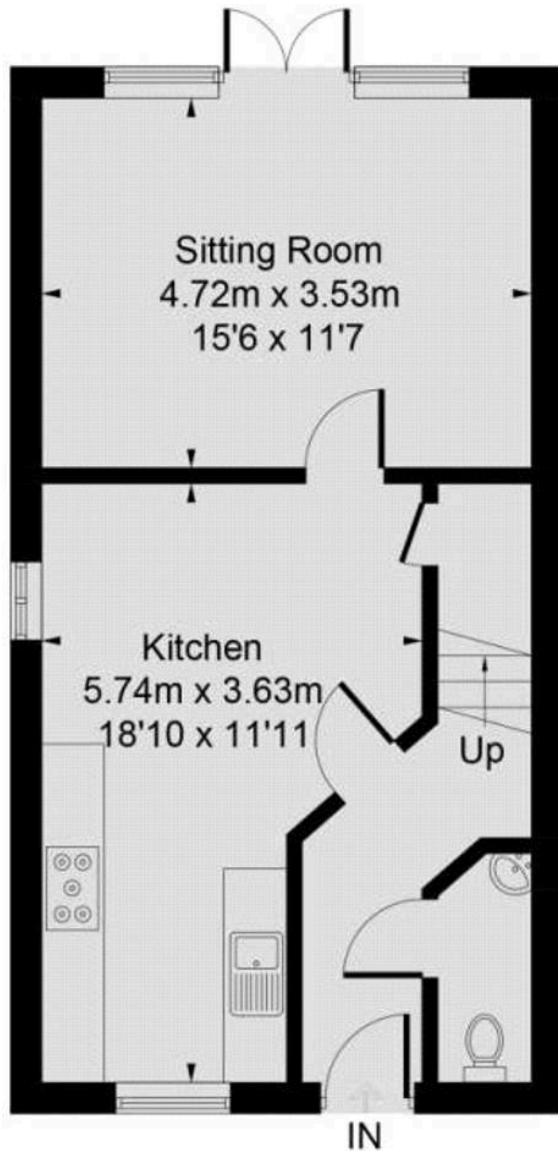
Simpsons

The Pro**active** Agent

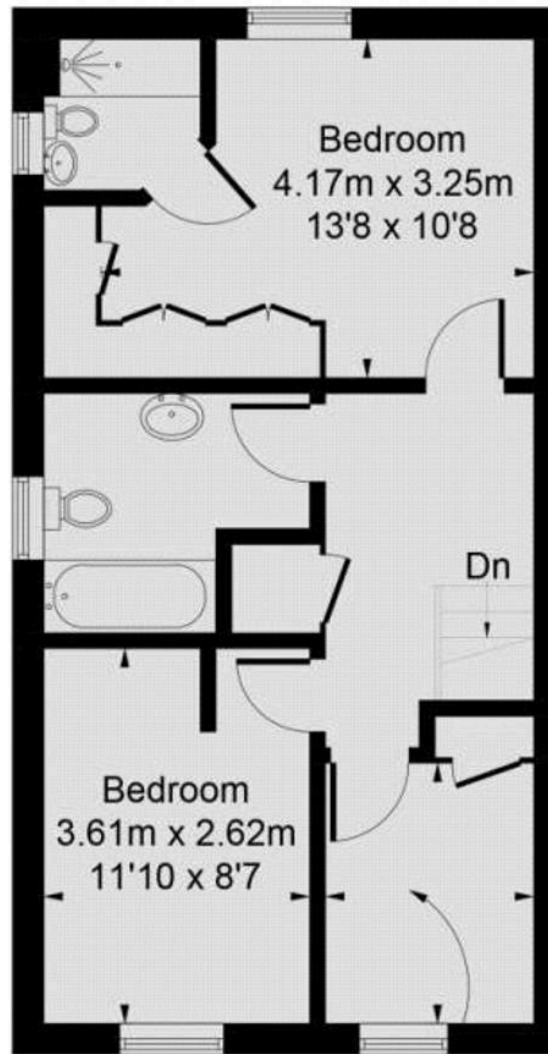
Approximate Gross Internal Area = 89.1 sq m / 959 sq ft

Garage = 18.0 sq m / 194 sq ft

Total = 107.1 sq m / 1153 sq ft

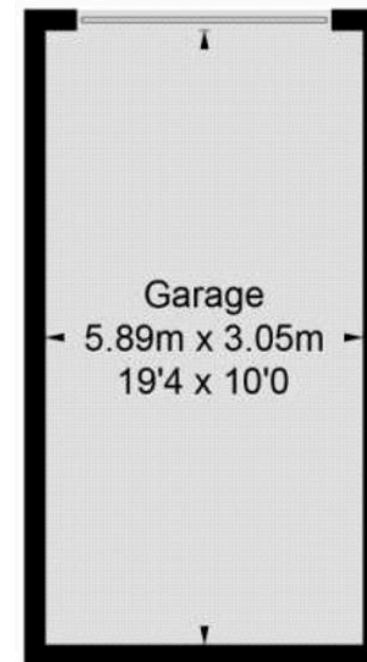


Ground Floor



First Floor

Bedroom
2.51m x 2.03m
8'3 x 6'8



(Not Shown In Actual
Location / Orientation)

33 Poppy Close

Kingston Bagpuize, Abingdon

SOLD using Simpsons Fresh To Market Process. A superbly presented three bedroom semi-detached family home, situated in the village of Kingston Bagpuize.

Council Tax band: D

Tenure: Freehold



SCAN THE
QR CODE
TO BOOK
YOUR VIEWING

