



5 Tetbury Drive, Witney



5 Tetbury Drive

Located in a peaceful cul-de-sac position on the popular Deer Park development is this well-presented four-bedroom detached home.

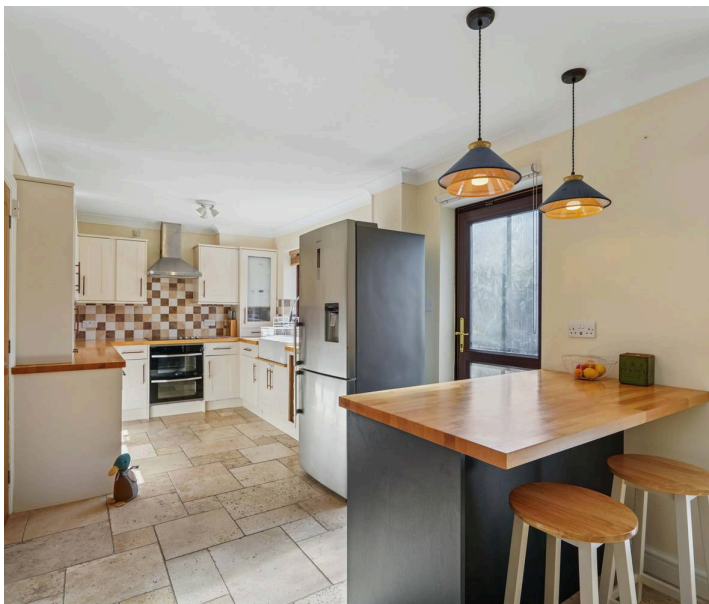
Council Tax band: E

Tenure: Freehold

EPC Energy Efficiency Rating: D

EPC Environmental Impact Rating: D

- Located on the popular Deer Park development is this well-presented four-bedroom detached home.
- Situated in a peaceful cul-de-sac position.
- Open plan kitchen/dining room with doors leading into the conservatory.
- Sitting room with feature fireplace.
- Master bedroom with modern ensuite shower room.
- South-facing rear garden.





Tetbury Drive - Witney

Approximate Gross Internal Area = 154.2 sq m / 1660 sq ft

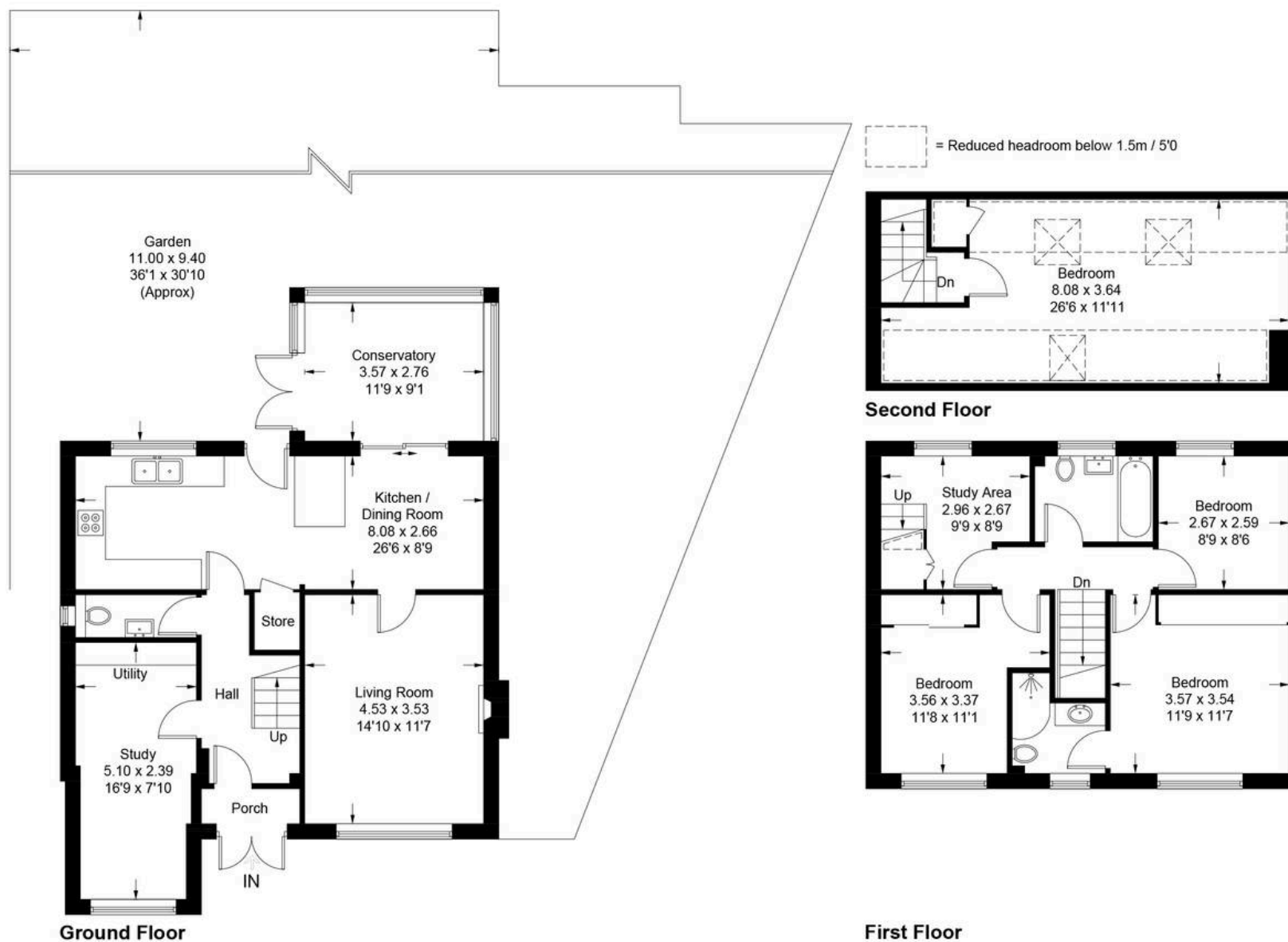


Illustration for identification purposes only, measurements are approximate, not to scale. Fourlabs.co © (ID1245269)



Simpsons Witney Branch

4 Langdale Court Witney, Oxfordshire - OX28 6AD

01993 835030 • witney@simpsonsproperty.com • www.simpsonsproperty.com/