



Weavers Bridge House Priory Mill Lane, Witney



# 1 Weavers Bridge House Priory Mill Lane

Witney

A unique opportunity to purchase a live/work unit comprising a ground floor two-bedroom apartment and adjoining retail unit situated in the heart of Witney.

Council Tax band: C

Tenure: Leasehold

EPC Energy Efficiency Rating: C

EPC Environmental Impact Rating: D

- Brought to market with the certainty of no onward chain.
- A unique opportunity to purchase a live/work unit comprising ground floor two-bedroom apartment and adjoining retail unit situated in the heart of Witney.
- Stylish two-bedroom ground floor apartment.
- Adjoining self-contained work unit with A1, A2 & A3 usage.
- Allocated parking space.
- Within walking distance of all local amenities and nearby transport links such as the S1 & S7 bus stops and the A40 providing access to Oxford and Cheltenham.





# Weavers Bridge House - Witney

Approximate Gross Internal Area = 148.3 sq m / 1596 sq ft  
(Excluding Reserved Car Parking Space)

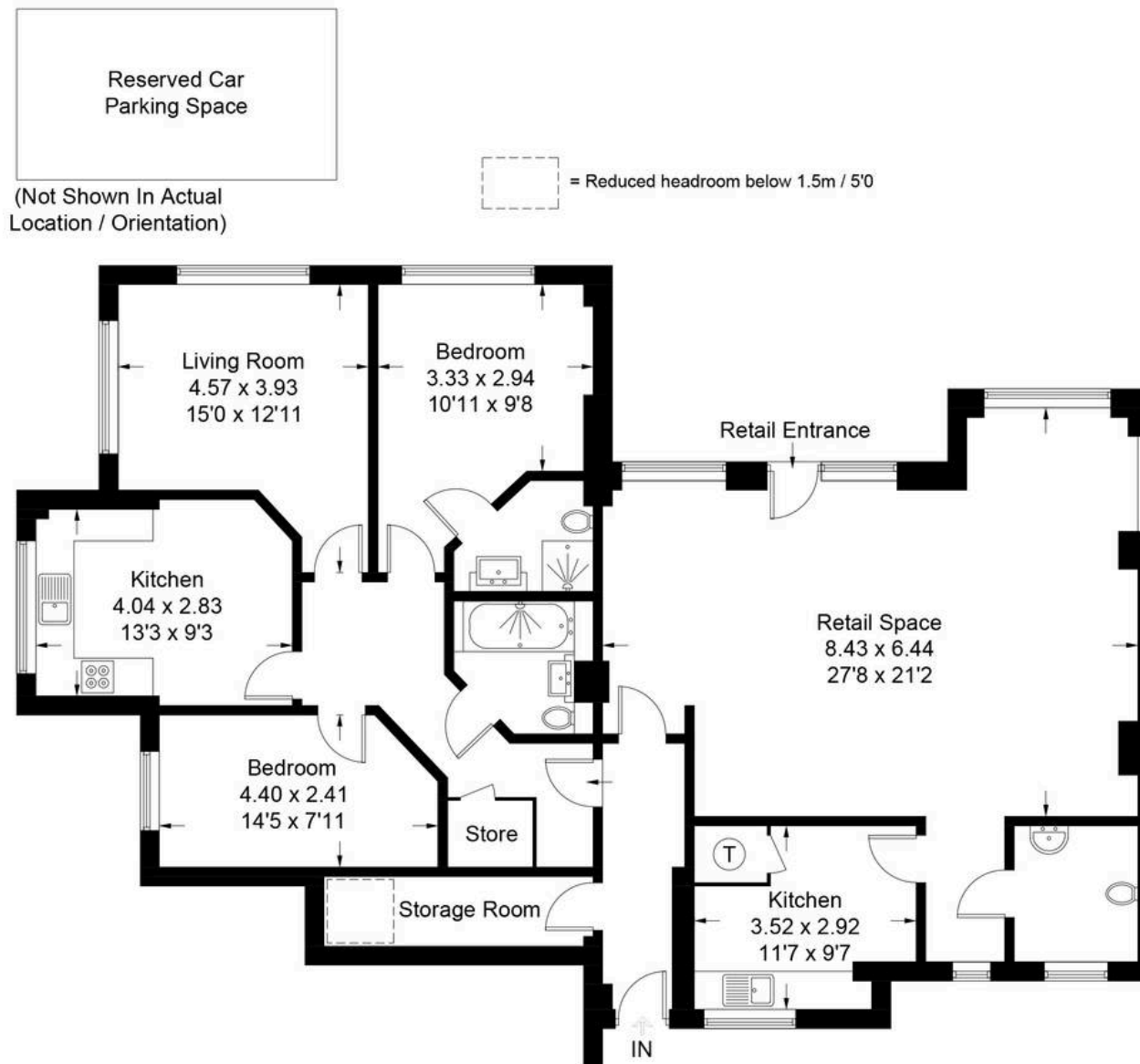


Illustration for identification purposes only, measurements are approximate,  
not to scale. Fourlabs.co © (ID1235112)



## Simpsons Witney Branch

4 Langdale Court Witney, Oxfordshire - OX28 6AD

01993 835030 • [witney@simpsonsproperty.com](mailto:witney@simpsonsproperty.com) • [www.simpsonsproperty.com/](http://www.simpsonsproperty.com/)