



134 Burwell Drive, Witney



134 Burwell Drive

Brought to market with no onward chain is this three/four bedroom semi-detached home located on the popular Burwell development.

Council Tax band: C

Tenure: Freehold

EPC Energy Efficiency Rating: D

EPC Environmental Impact Rating: E

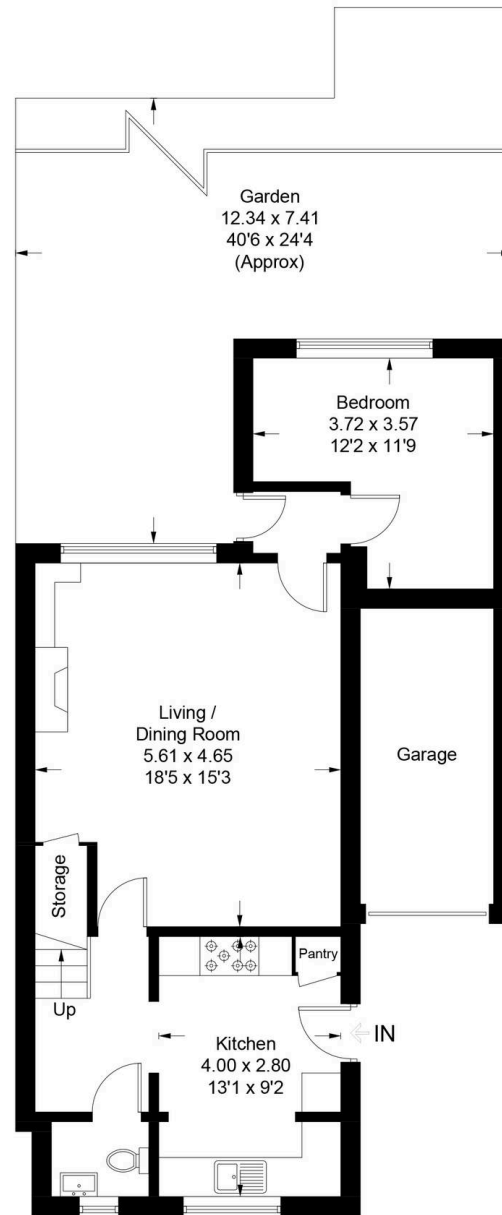
- Brought to market with no onward chain.
- A three/four bedroom semi-detached house located on the popular Burwell development.
- Spacious kitchen with range cooker.
- Sitting room with feature fireplace.
- Versatile accommodation with the option to have three or four bedrooms.
- Garage and off-street parking for three cars.



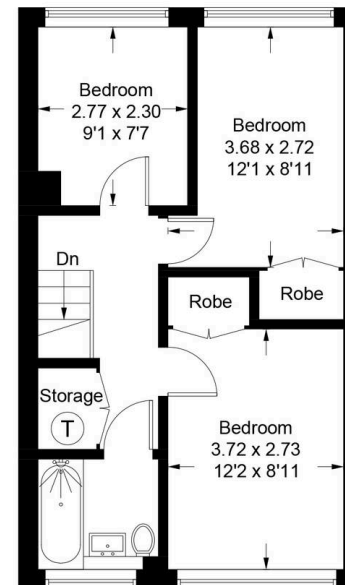


Burwell Drive - Witney

Approximate Gross Internal Area = 97.6 sq m / 1050 sq ft
(Excluding Garage)



Ground Floor



First Floor



Simpsons Witney Branch

4 Langdale Court Witney, Oxfordshire - OX28 6AD

01993 835030 • witney@simpsonsproperty.com • www.simpsonsproperty.com/