



Flat J, 45 Woodford Way, Witney



Flat J

A stylish two-bedroom second floor apartment situated in a town centre location within walking distance of all local amenities.

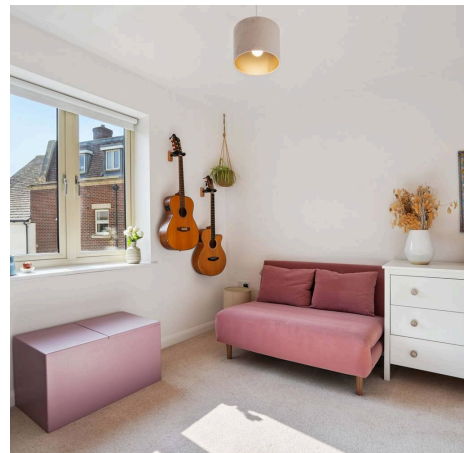
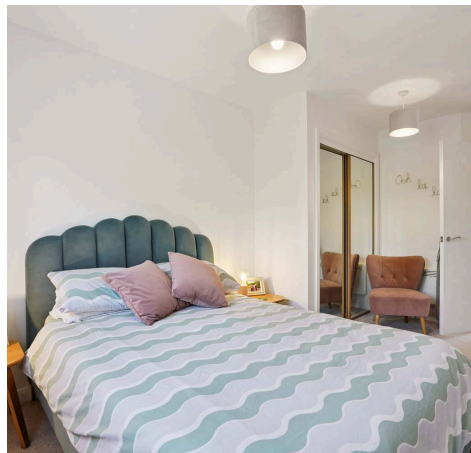
Council Tax band: C

Tenure: Leasehold

EPC Energy Efficiency Rating: C

EPC Environmental Impact Rating: C

- Stylish two-bedroom second floor apartment situated in a central position within walking distance of all local amenities.
- Much improved by the current owner with benefits including upgraded kitchen, bathroom, flooring and heating.
- Allocated parking space.
- Open plan kitchen/dining/living room.
- Two double bedrooms, master bedroom with built in wardrobe.
- Modern bathroom with bath and shower.



45 Woodford Way - Witney

Approximate Gross Internal Area = 61.6 sq m / 663 sq ft

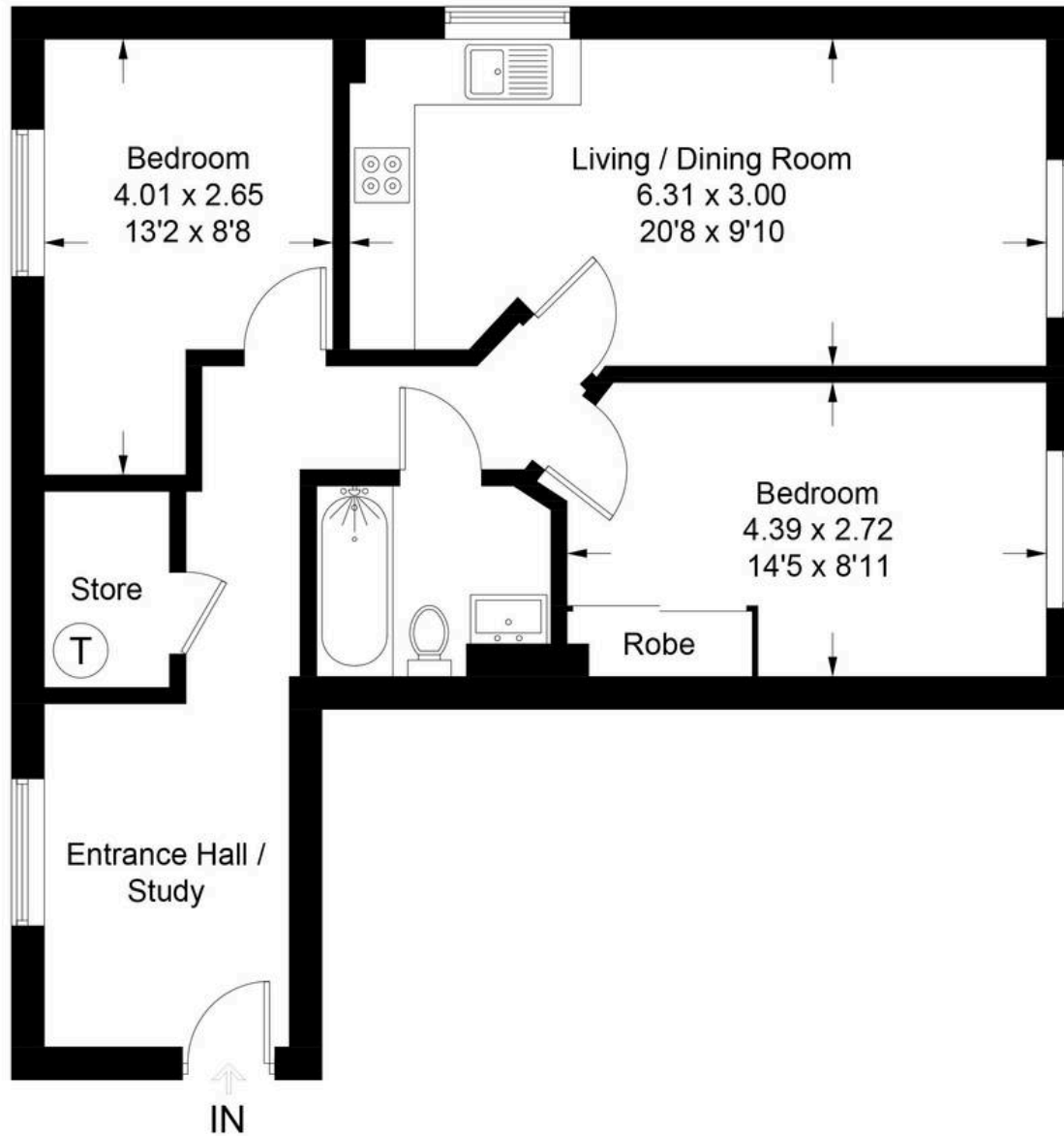


Illustration for identification purposes only, measurements are approximate,
not to scale. Fourlabs.co © (ID1232627)



Simpsons Witney Branch

4 Langdale Court Witney, Oxfordshire - OX28 6AD

01993 835030 • witney@simpsonsproperty.com • www.simpsonsproperty.com/