



4 Fir Tree Close, Southmoor

Abingdon

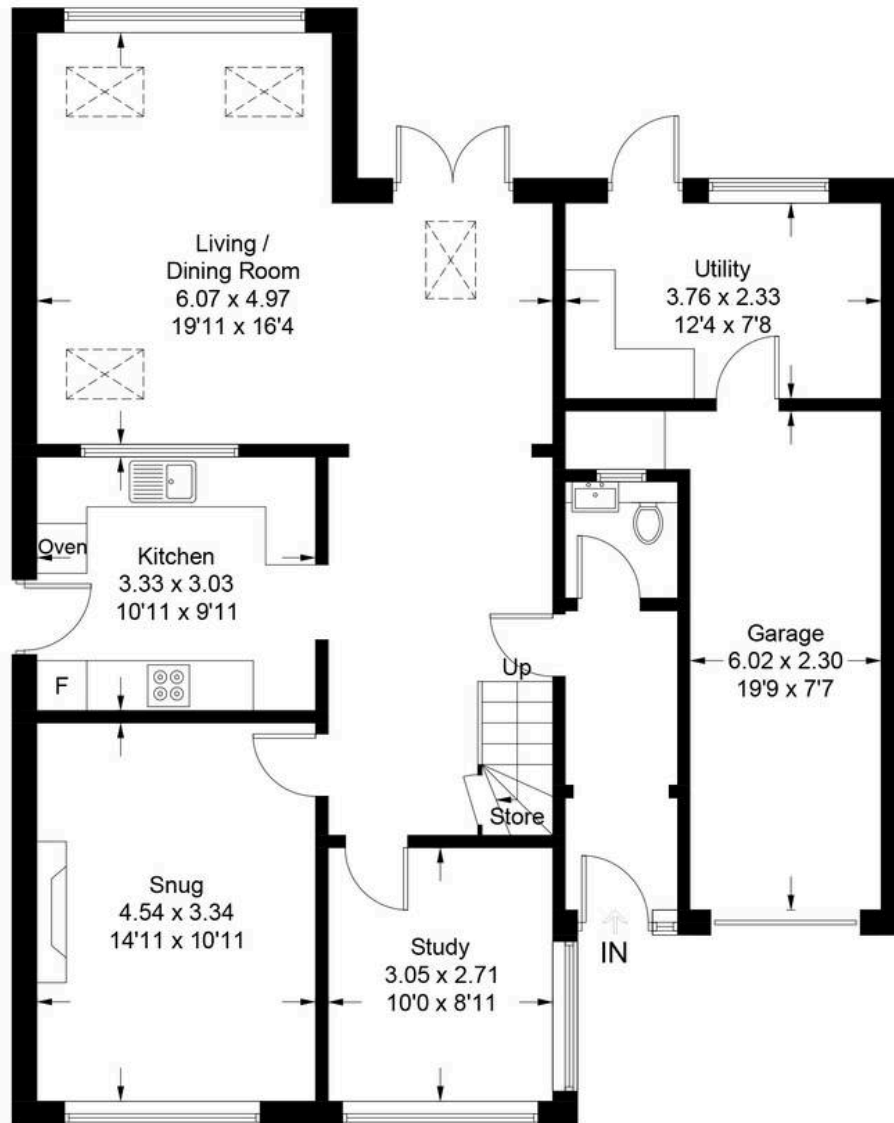
£550,000

Simpsons

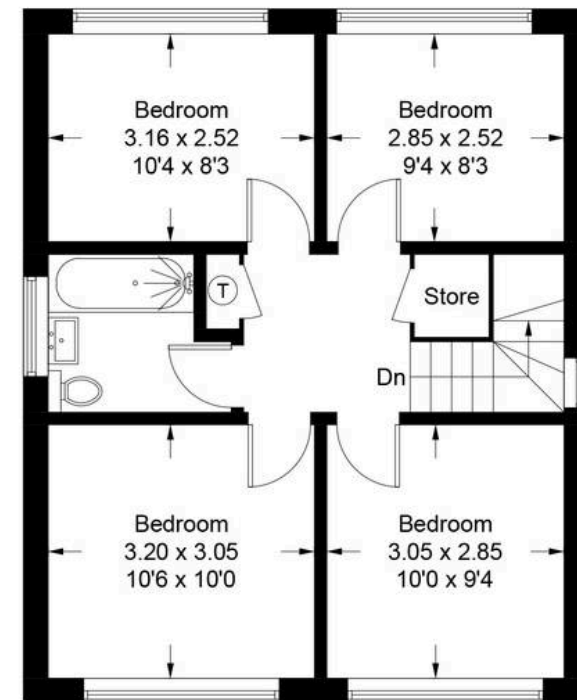
The Pro**active** Agent

Fir Tree Close - Southmoor

Approximate Gross Internal Area = 156.5 sq m / 1684 sq ft
(Including Utility / Garage)



Ground Floor



First Floor

Illustration for identification purposes only, measurements are approximate,
not to scale. Fourlabs.co © (ID1238007)

4 Fir Tree Close

Southmoor, Abingdon

Council Tax band: D

Tenure: Freehold

- South facing rear garden, with mature planting bordering the lawn area with two separate seating areas.
- This spacious four bedroom detached family home located in the cul-de-sac location of Fir Tree Close, Southmoor.
- Driveway parking for three cars & larger than average single garage 2.3m x 6m.
- The ground floor offers entrance hall, cloakroom, kitchen, dining and family area, sitting room and study/ playroom.
- The first floor has four bedrooms with access to a shared family bathroom.
- The property benefits from a single story extension to the rear of the property, offering a substantial open plan seating and dining area which leads onto the south facing rear garden.
- Separate utility room located to the rear of the garage



SCAN THE
QR CODE
TO BOOK
YOUR VIEWING



