



263 Thorney Leys, Witney



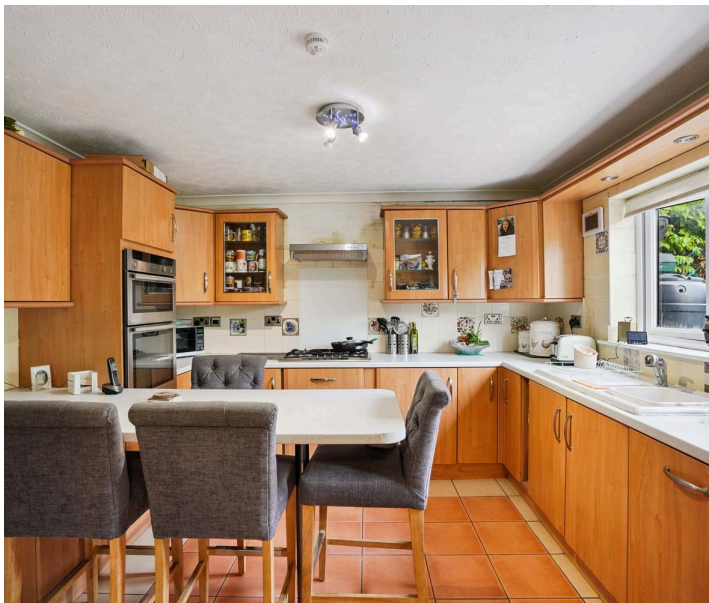
263 Thorney Leys

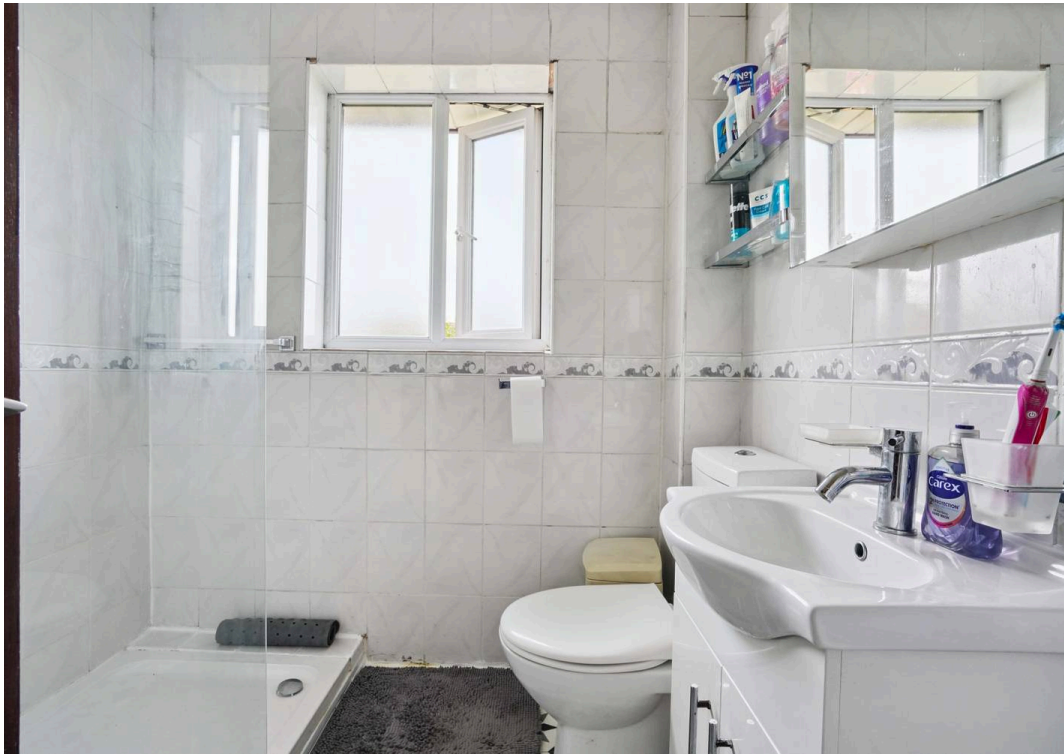
A three-bedroom semi-detached home presented in good order throughout located on the popular Thorney Leys development.

Council Tax band: C

Tenure: Freehold

- A three-bedroom semi-detached home presented in good order throughout situated on the popular Thorney Leys development.
- Open plan kitchen/dining room with french doors leading out to the garden.
- Off-street parking for three cars.
- Two double bedrooms and one single bedroom.
- Easterly-facing tiered rear garden with extended patio area.
- Converted garage which is currently used as a workshop/utility room.





Thorney Leys - Witney

Approximate Gross Internal Area = 97.7 sq m / 1052 sq ft
(Excluding External Cupboard)

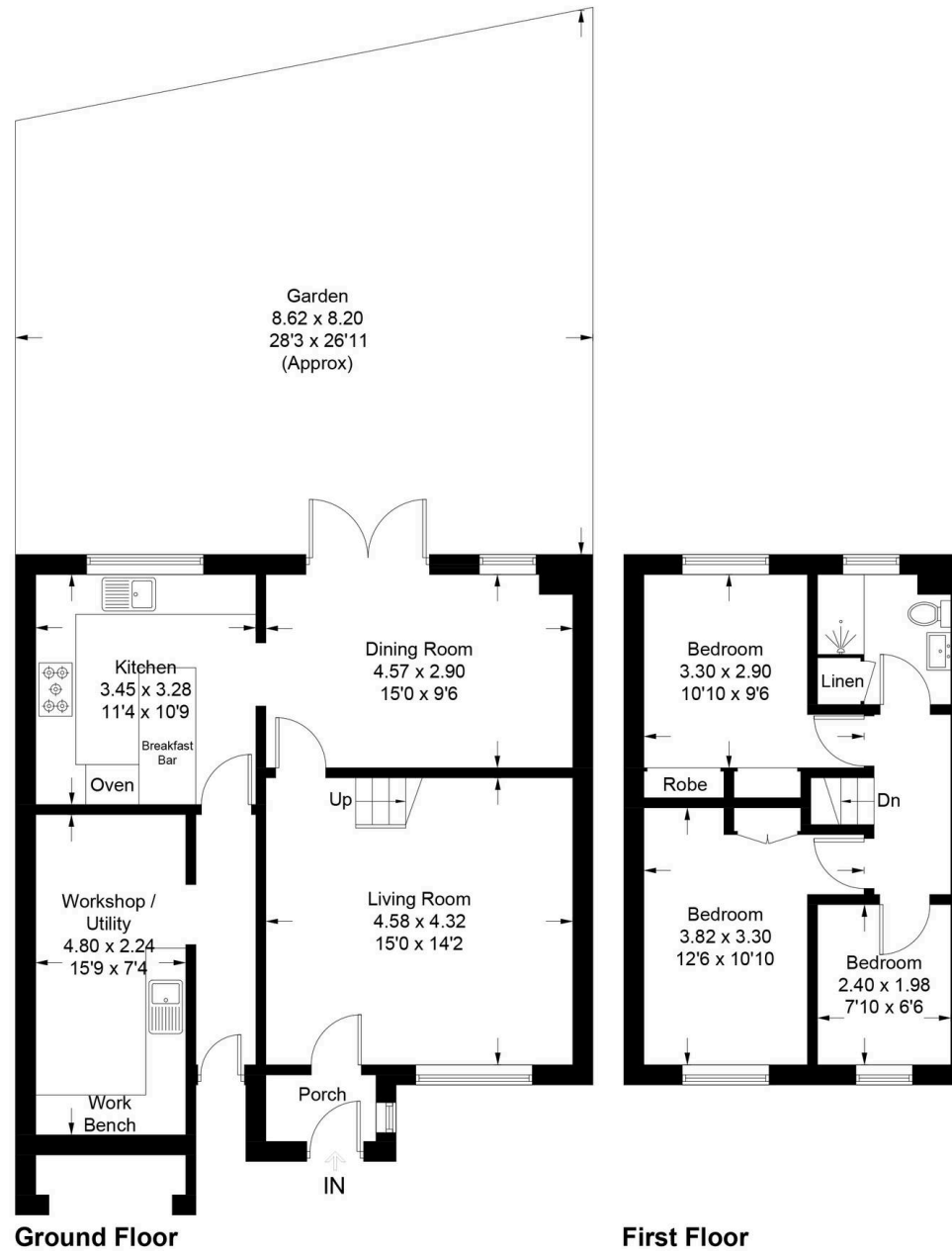


Illustration for identification purposes only, measurements are approximate,
not to scale. Fourlabs.co © (ID1237538)



Simpsons Witney Branch

4 Langdale Court Witney, Oxfordshire - OX28 6AD

01993 835030 • witney@simpsonsproperty.com • www.simpsonsproperty.com/