



6 Akeman Road, North Leigh



6 Akeman Road

A beautifully presented four-bedroom detached home located on the edge of a popular development in the highly sought-after village of North Leigh.

Council Tax band: F

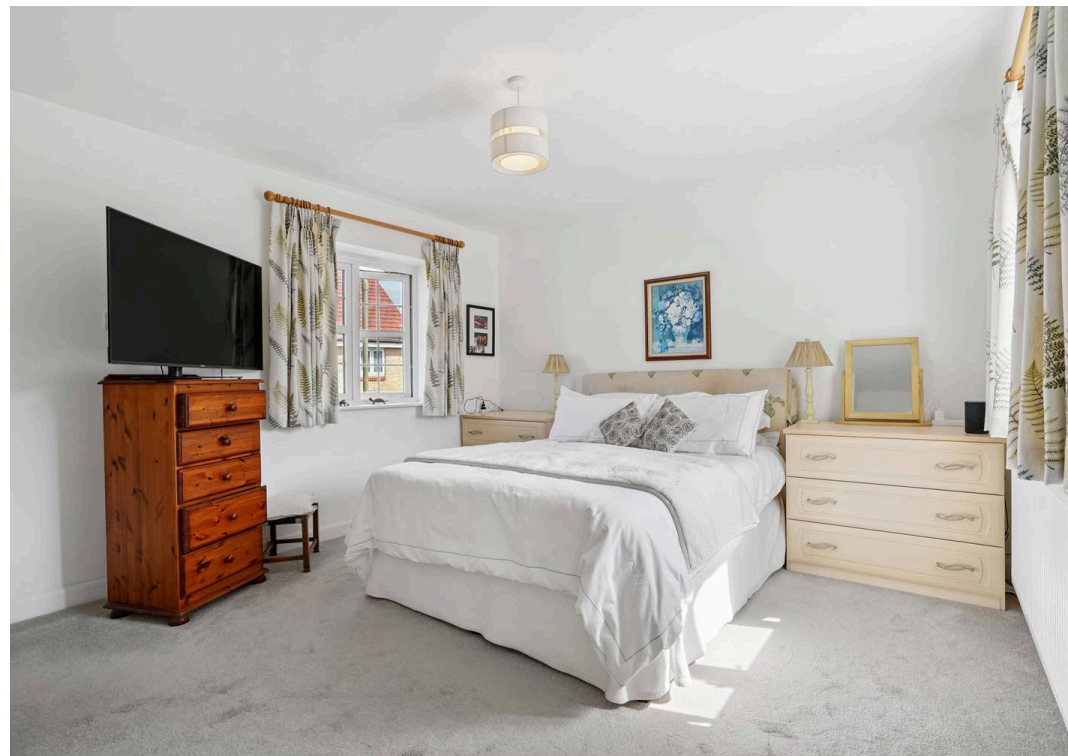
Tenure: Freehold

EPC Energy Efficiency Rating: B

EPC Environmental Impact Rating: B

- A beautifully presented four-bedroom detached home located in the popular village of North Leigh.
- Open plan kitchen/dining room with integrated appliances, quartz worktops and french doors leading out to the rear garden.
- Beautifully landscaped easterly-facing garden with summer house, pergola and an abundance of mature borders, trees and shrubs.
- Master bedroom with built in wardrobes and stylish ensuite shower room.
- Garage and off-street parking with EV charger.
- Modern bathroom with bath and separate shower.





Akeman Road - North Leigh

Approximate Gross Internal Area = 142.1 sq m / 1529 sq ft

Garage = 19.4 sq m / 209 sq ft

Total = 161.5 sq m / 1738 sq ft

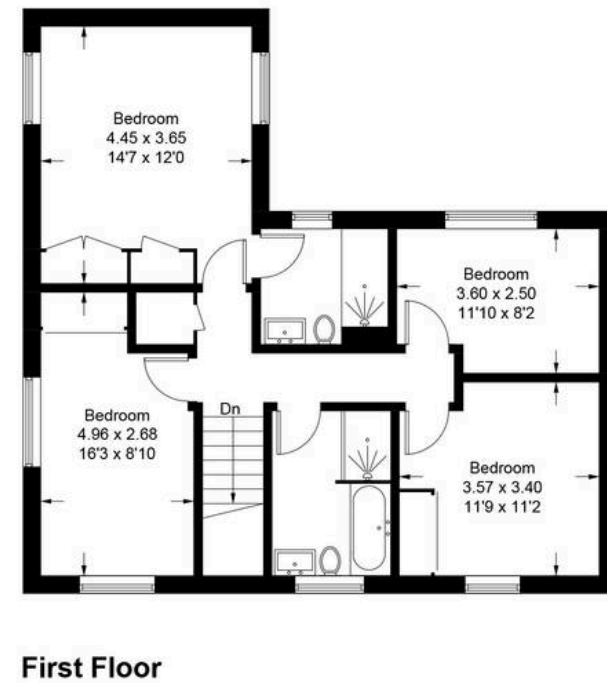


Illustration for identification purposes only, measurements are approximate,
not to scale. Fourlabs.co © (ID1230906)



Simpsons Witney Branch

4 Langdale Court Witney, Oxfordshire - OX28 6AD

01993 835030 • witney@simpsonsproperty.com • www.simpsonsproperty.com/