



The Pieces, Bampton



The Pieces

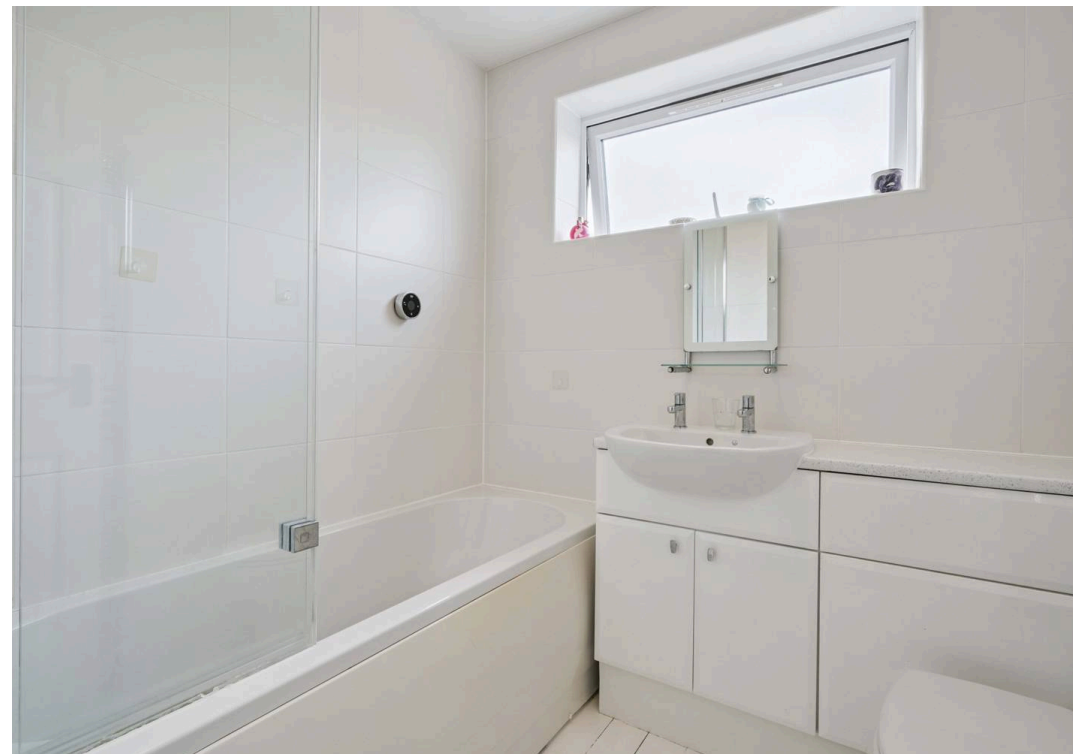
Bampton, Bampton

Brought to the market is this spacious well maintained four bedroom detached home located in a quiet cul-de-sac in the popular village of Bampton
Council Tax band: D

Tenure: Freehold

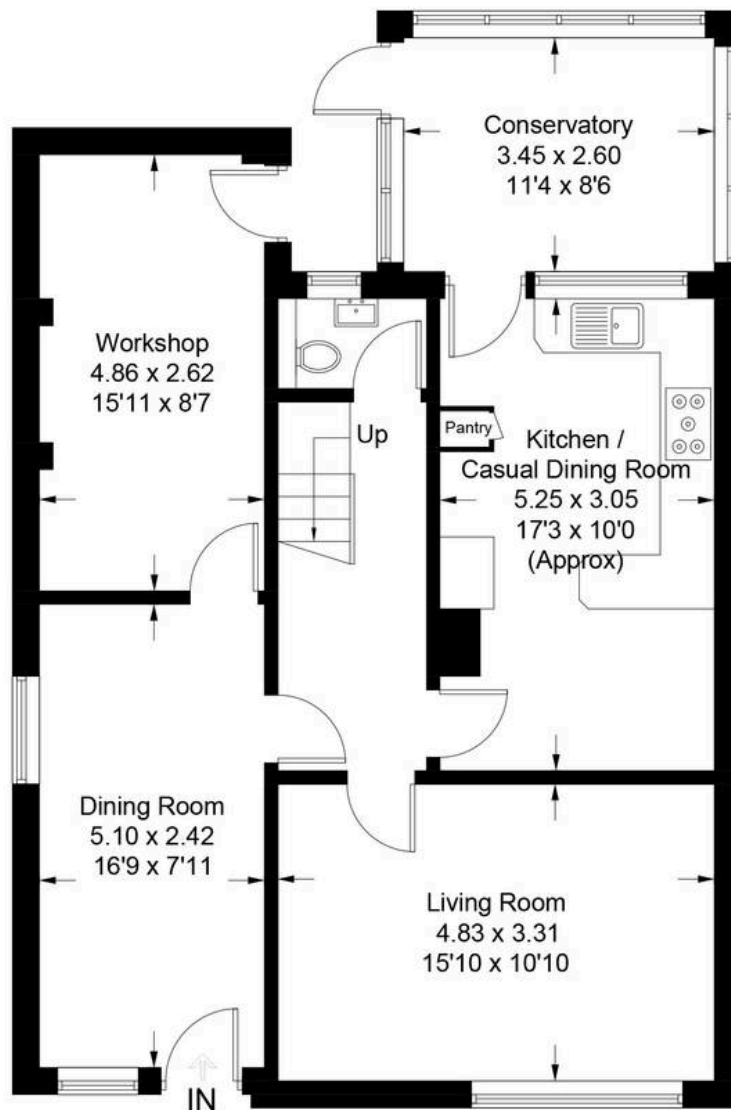
- Spacious four bedroom detached home
- Located in a quiet cul-de-sac in a desirable village location
- Generous rear garden with work shop
- Off road parking for two vehicles
- Three double bedrooms
- Close proximity to the local village amenities



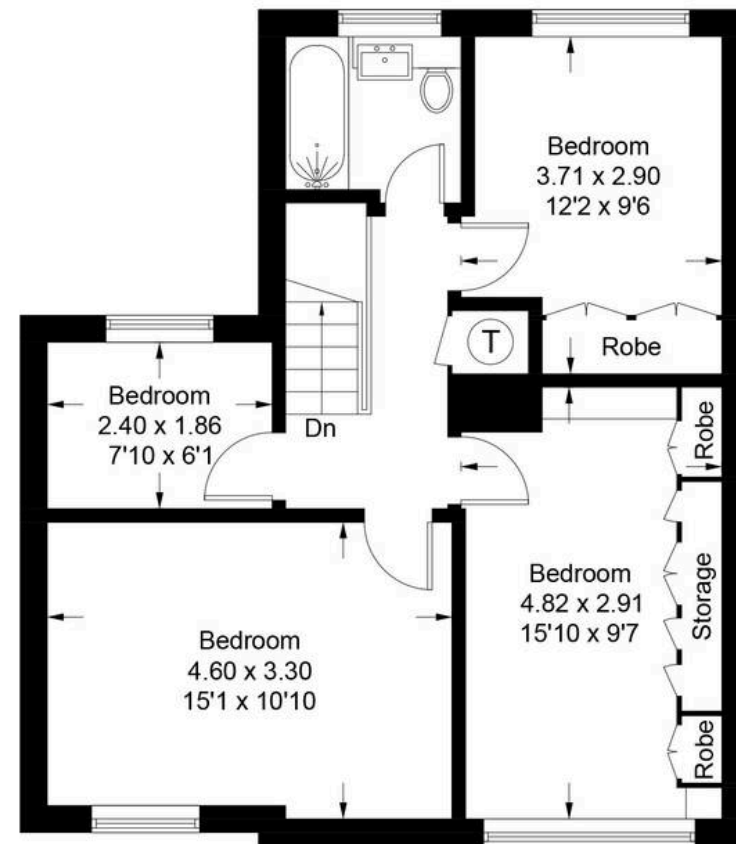


The Pieces - Bampton

Approximate Gross Internal Area = 135.1 sq m / 1454 sq ft



Ground Floor



First Floor

Illustration for identification purposes only, measurements are approximate,
not to scale. Fourlabs.co © (ID1236033)



Simpsons Witney Branch

4 Langdale Court Witney, Oxfordshire - OX28 6AD

01993 835030 • witney@simpsonsproperty.com • www.simpsonsproperty.com/