



Chestnut Cottage, Lew Road, Curbridge





## Chestnut Cottage, Lew Road

A recently constructed three bedroom semi-detached home located in the popular village of Curbridge.

Council Tax band: E

Tenure: Freehold

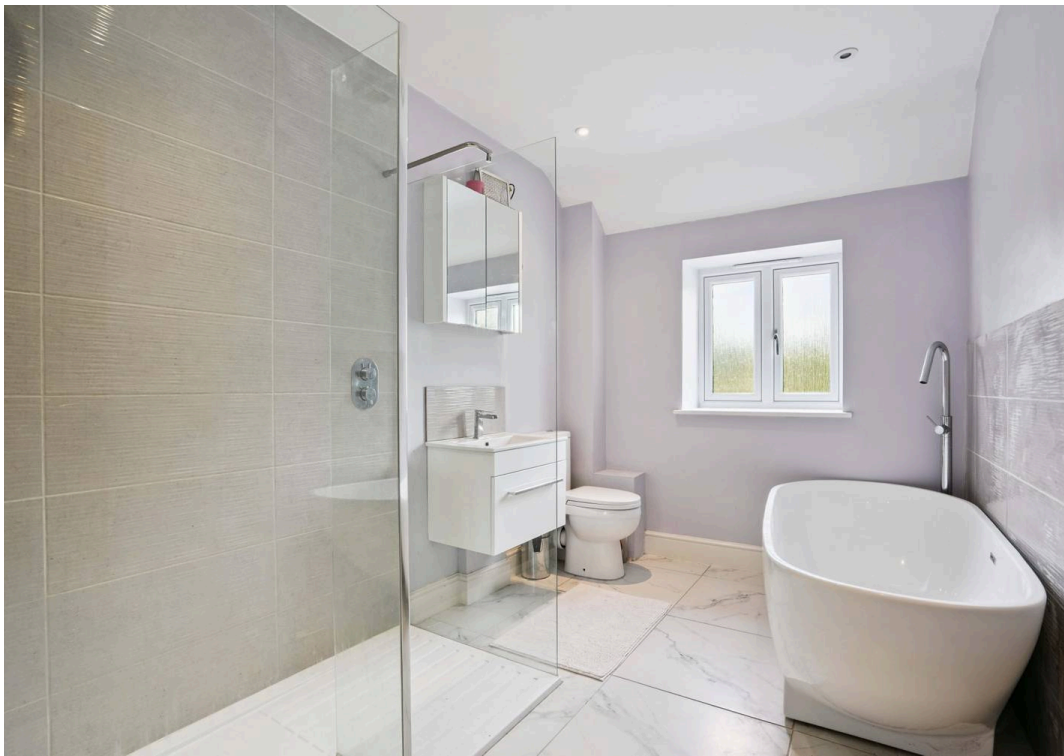
EPC Energy Efficiency Rating: B

EPC Environmental Impact Rating: B

- A recently constructed three-bedroom semi-detached home offered for sale with the certainty of no onward chain.
- Three double bedrooms, master bedroom with ensuite.
- Landscaped rear garden with beautiful countryside views.
- Energy efficient air source heat pump.
- Two reception rooms to the ground floor including sitting room with log burner.
- Gated off-street parking.

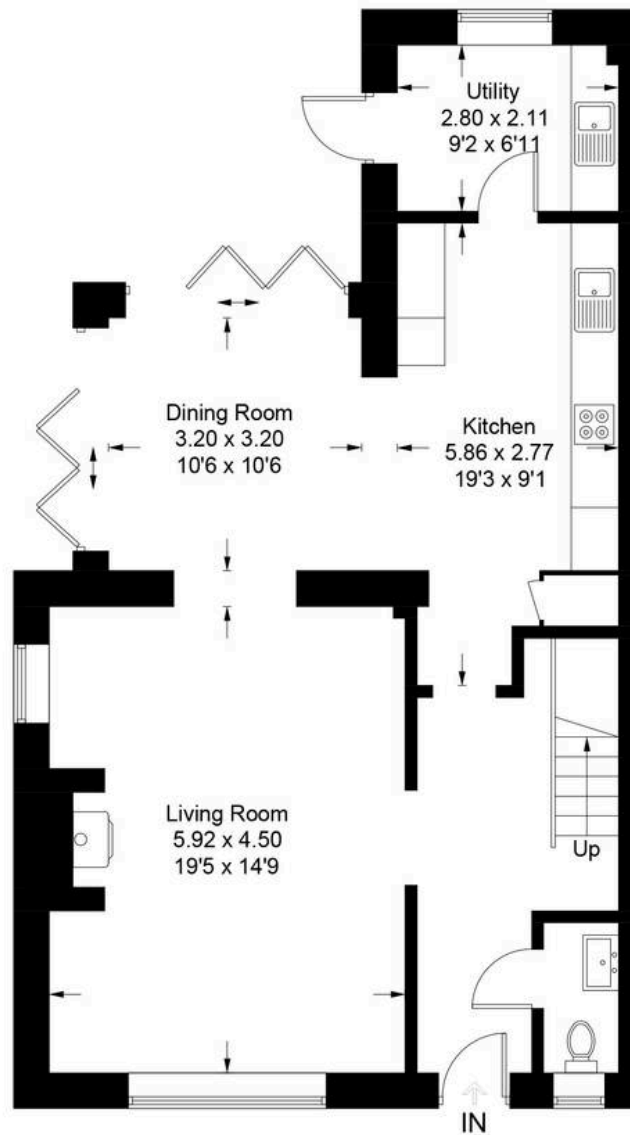




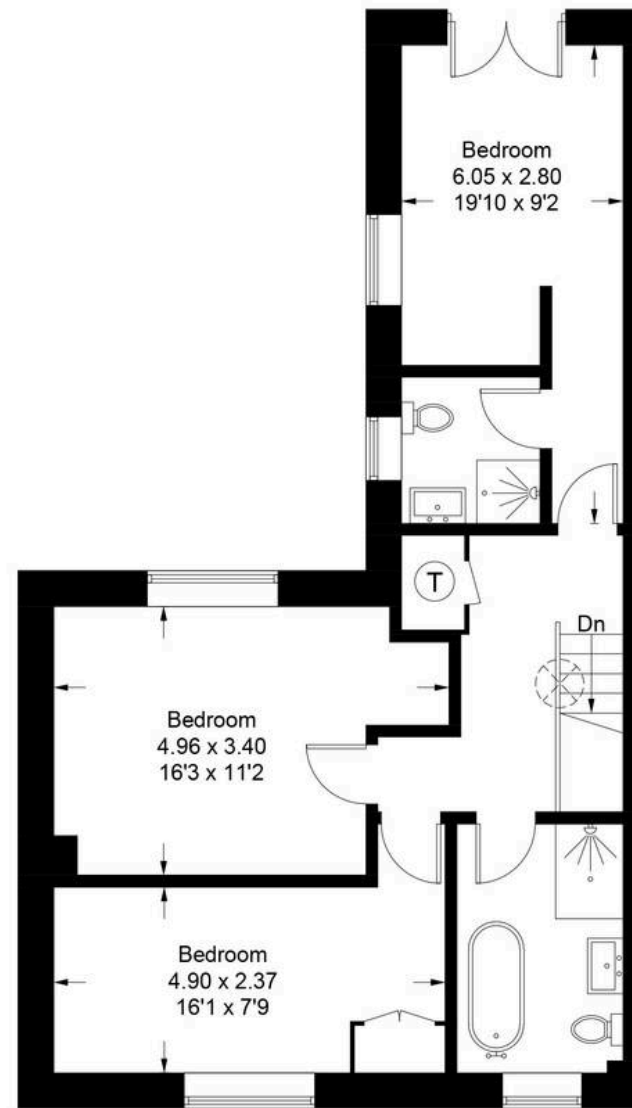


# Low Road - Curbridge

Approximate Gross Internal Area  
140.7 sq m / 1514 sq ft



**Ground Floor**



**First Floor**

Illustration for identification purposes only, measurements are approximate,  
not to scale. Fourlabs.co © (ID12375835)





## Simpsons Witney Branch

4 Langdale Court Witney, Oxfordshire - OX28 6AD

01993 835030 • [witney@simpsonsproperty.com](mailto:witney@simpsonsproperty.com) • [www.simpsonsproperty.com/](http://www.simpsonsproperty.com/)