



Greenfield Crescent, Stonesfield



Greenfield Crescent

Stonesfield

Brought to market with no onward chain is this detached two bedroom bungalow located in a peaceful position in the popular village of Stonesfield.

Council Tax band: D

Tenure: Freehold

- Brought to market with no onward chain.
- A wonderful opportunity to purchase a detached two bedroom bungalow on a popular road in Stonesfield.
- Requiring modernisation throughout.
- 3/4 garage and off-street parking for multiple vehicles.
- Mature garden with water feature, fruit trees and shrubs.
- Bathroom with bath and shower over.





Greenfield Crescent - Stonesfield

Approximate Gross Internal Area = 110.9 sq m / 1194 sq ft

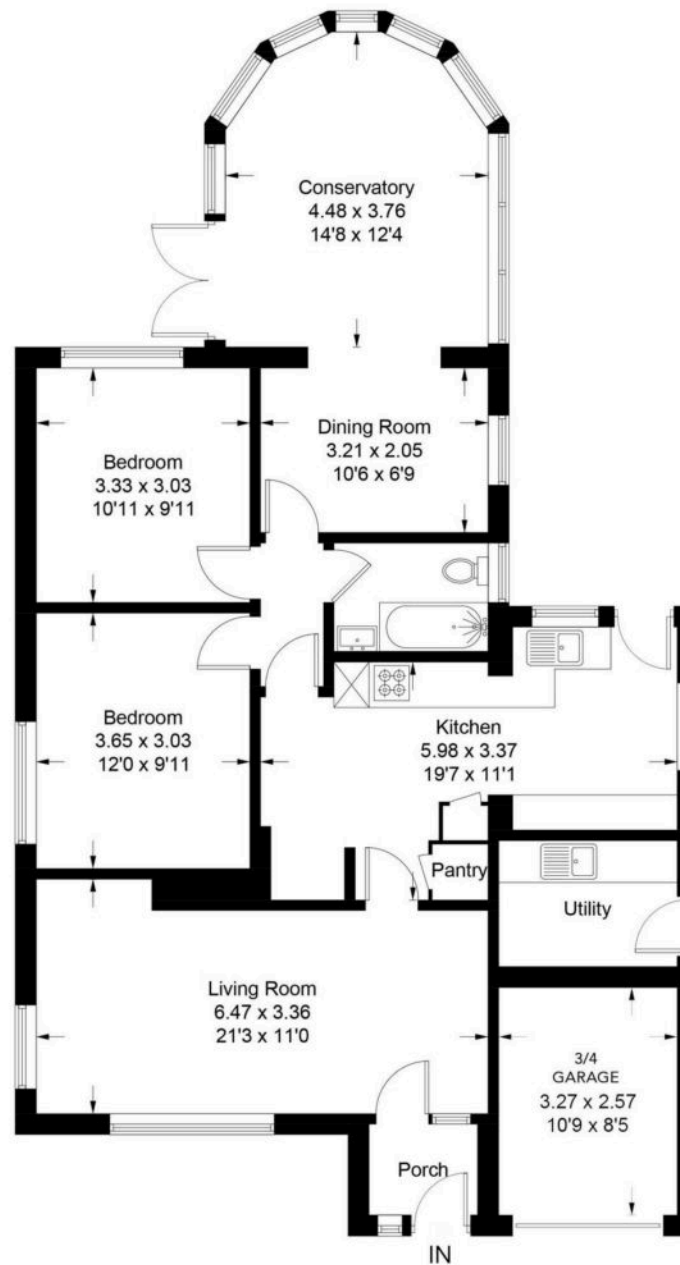


Illustration for identification purposes only, measurements are approximate, not to scale. Fourlabs.co © (ID1235666)



Simpsons Witney Branch

4 Langdale Court Witney, Oxfordshire - OX28 6AD

01993 835030 • witney@simpsonsproperty.com • www.simpsonsproperty.com/