



# 1 Vestry Close, Grove

Wantage

**Simpsons**  
The Proactive Agent

Guide Price £500,000

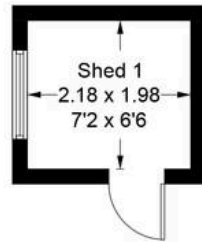
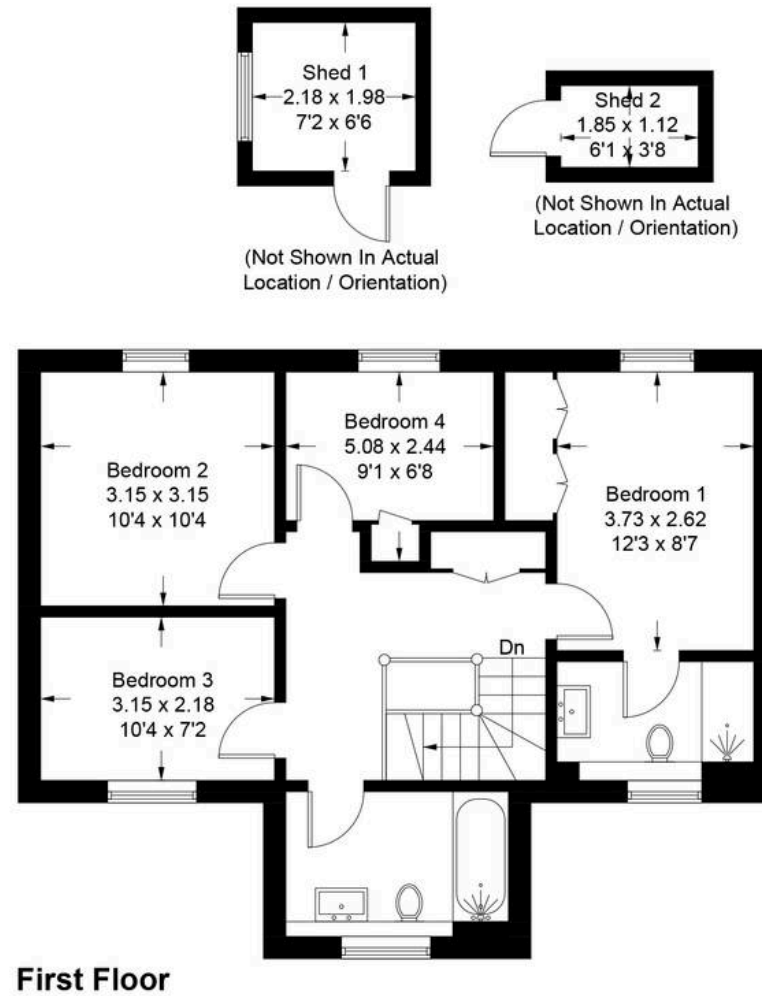
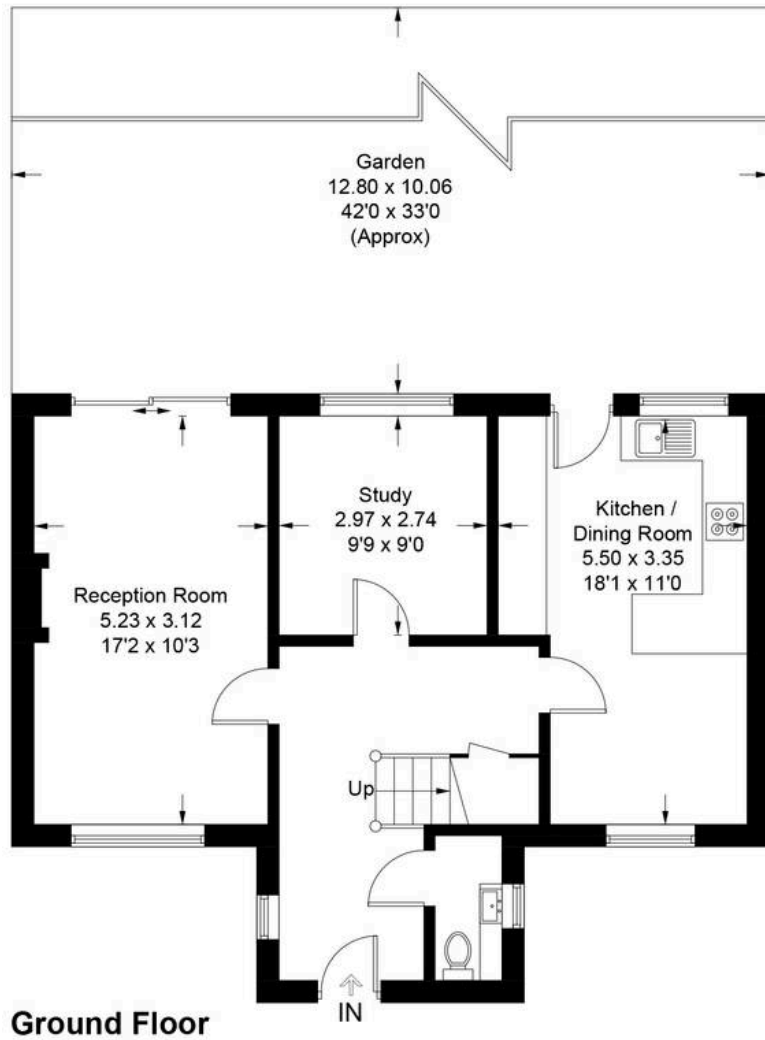


SCAN THE  
QR CODE  
FOR DETAILS

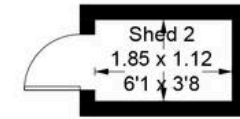


# Vestry Close - Grove

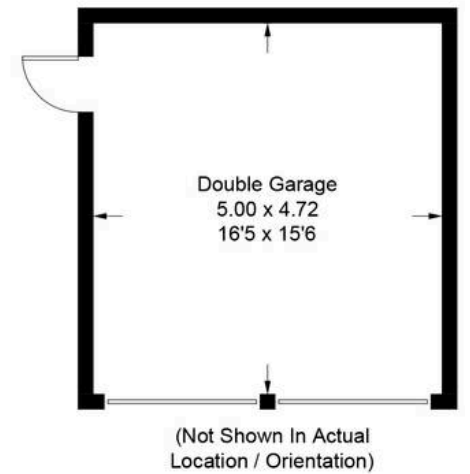
Approximate Gross Internal Area = 118.8 sq m / 1279 sq ft  
 Double Garage / Sheds = 29.9 sq m / 322 sq ft  
 Total = 148.7 sq m / 1601 sq ft



(Not Shown In Actual  
Location / Orientation)



(Not Shown In Actual  
Location / Orientation)



(Not Shown In Actual  
Location / Orientation)



# 1 Vestry Close

Grove, Wantage

A beautifully presented detached family home on the edge of Grove and within close proximity of shops and amenities.

Council Tax band: E

Tenure: Freehold

- Close To Shops & Amenities
- Located In-between Grove & Denchworth
- Beautifully Presented & Newly Updated Accommodation
- Detached Double Garage With Fully Boarded Loft Space



SCAN THE  
QR CODE  
**TO BOOK**  
YOUR VIEWING





