



64 Orchard Way, Wantage

Wantage

Simpsons
The Proactive Agent

In Excess of **£435,000**

Orchard Way - Wantage

Approximate Gross Internal Area = 131.9 sq m / 1420 sq ft

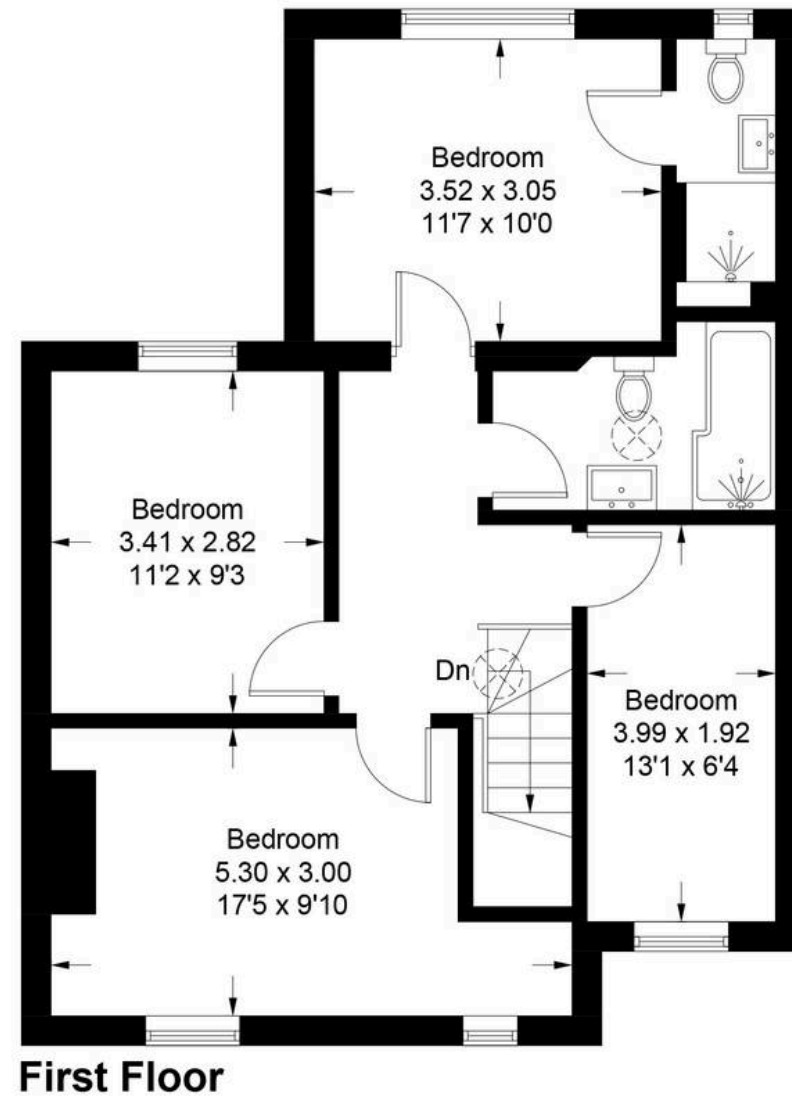
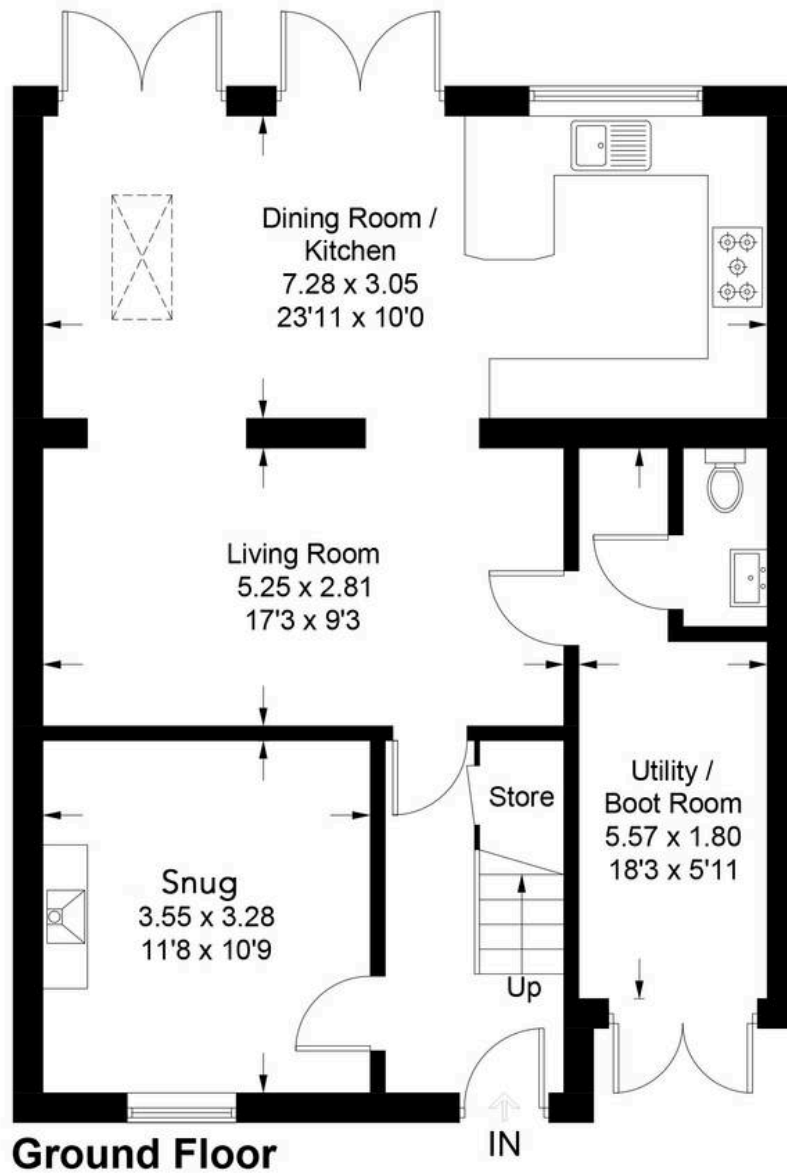


Illustration for identification purposes only, measurements are approximate, not to scale. Fourlabs.co © (ID1233126)

64 Orchard Way

Wantage, Wantage

Beautifully presented and extended four bedroom semi-detached property within walking distance of Wantage Market Place.

Council Tax band: C

Tenure: Freehold

- Beautifully Presented Accommodation Throughout
- Four Bedrooms & Master With En-Suite
- Extended & Upgraded Throughout
- South Facing Garden



