



24 Spring Road, Abingdon

Abingdon


Simpsons
The Pro**active** Agent

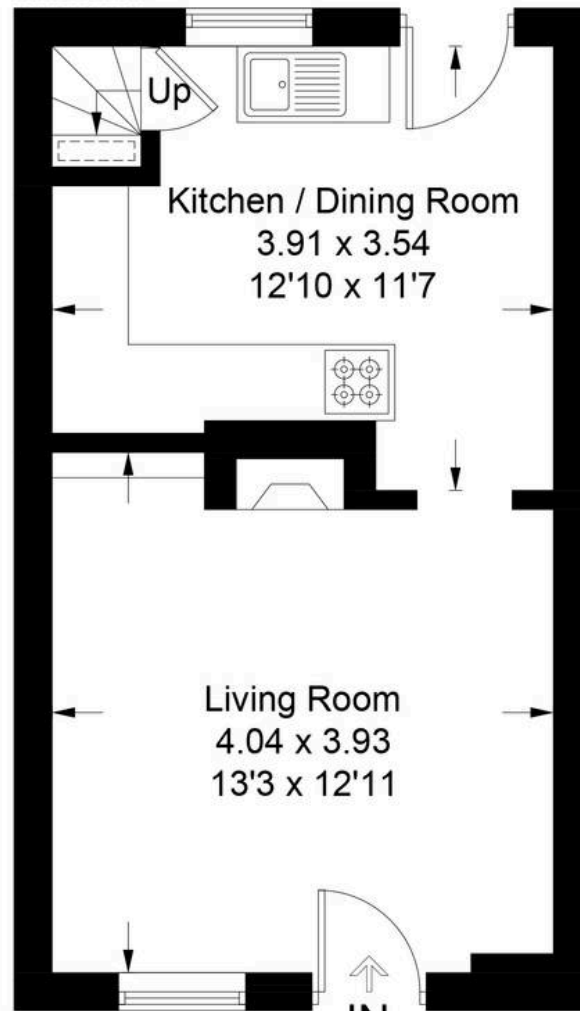
Guide Price **£315,000**

SPRING ROAD - ABINGDON

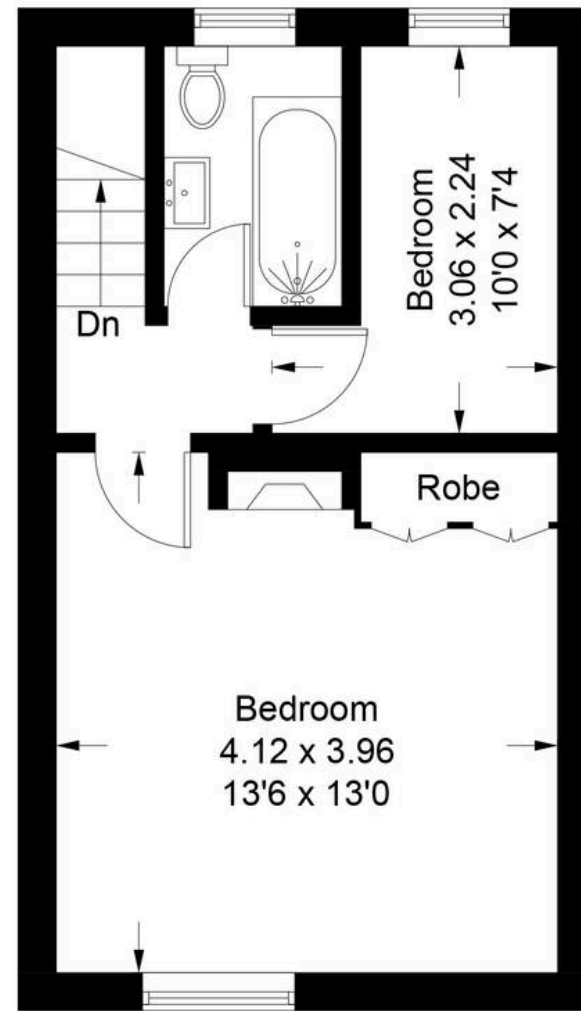
Approximate Gross Internal Area = 58.0 sq m / 624 sq ft



 = Reduced headroom below 1.5m / 5'0



Ground Floor



First Floor

Illustration for identification purposes only, measurements are approximate,
not to scale. Fourlabs.co © (ID1223652)

24 Spring Road

Abingdon, Abingdon

A delightful brick and stone built Victorian cottage falling within the Albert Park Conservation area.

Council Tax band: C

Tenure: Freehold

- A superbly presented, stone built cottage located on Spring Road, falling within The Albert Park Conservation area.
- Spacious kitchen/diner with space for dining table and chairs. Slate flooring, single stable door opening into a West facing rear garden.
- Various period features including Victorian fire places in the living room and master bedroom.
- A selection of stylish, replacement double glazed windows.
- Larger than average master bedroom with exposed solid wood flooring.



