



Old Well Cottage Pond Hill, Stonesfield



Old Well Cottage, Pond Hill

A charming stone built three-bedroom semi-detached cottage dating back to 1768 offering a purchaser a beautiful blend of character features with a modern interior.

Council Tax band: E

Tenure: Freehold

EPC Energy Efficiency Rating: D

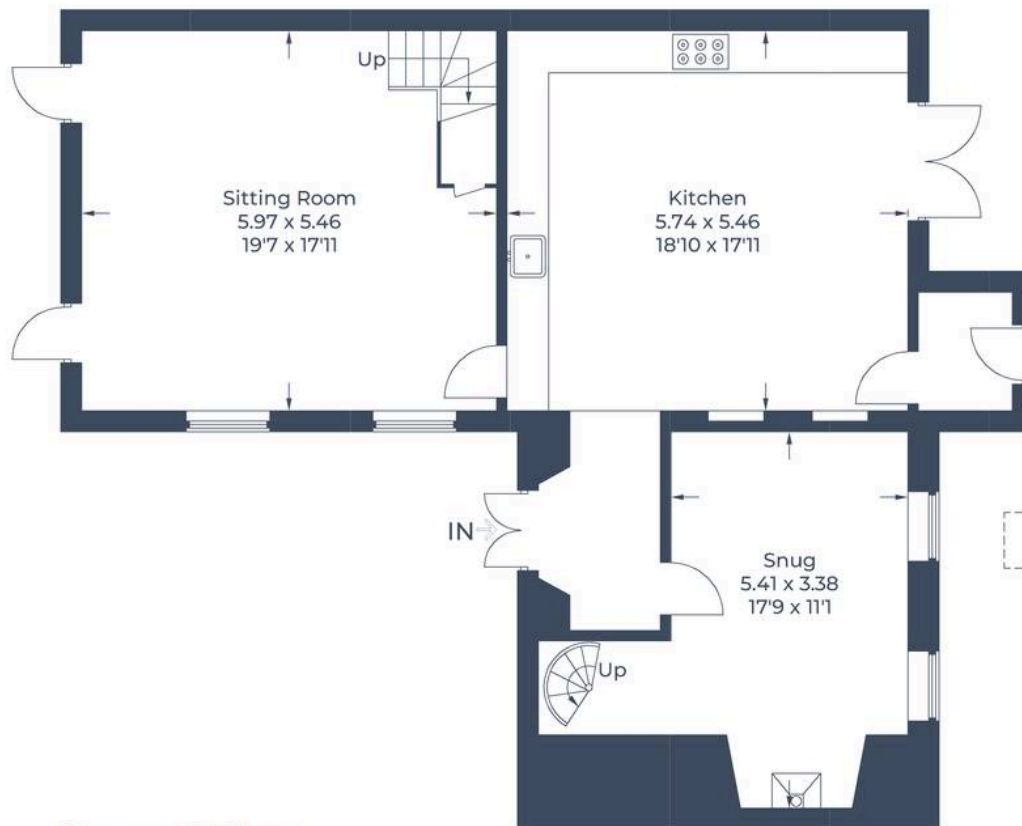
EPC Environmental Impact Rating:

- A charming stone built three-bedroom character property dating back to 1768 located in the highly-sought after village of Stonesfield.
- Open plan kitchen/dining room with stone wall feature and exposed beams.
- Sitting room with doors leading out to the easterly-facing rear garden.
- Additional reception room with log burner and spiral staircase leading up to bedroom three.
- Master bedroom with modern ensuite.
- Gravelled driveway with parking for multiple cars.

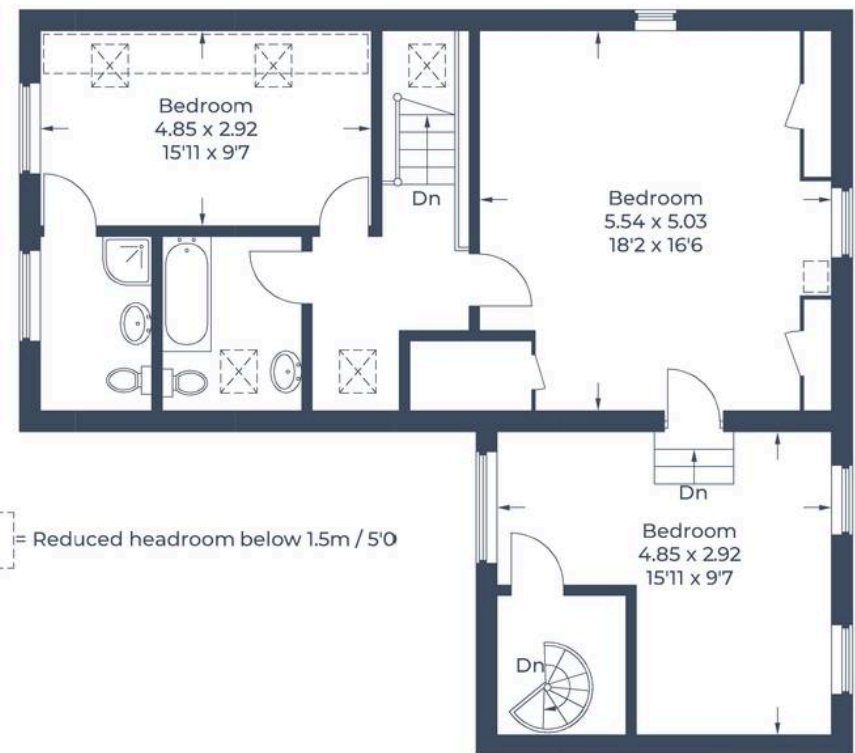




Approximate Gross Internal Area
Ground Floor = 98.1 sq m / 1,056 sq ft
First Floor = 84.2 sq m / 906 sq ft
Total = 182.3 sq m / 1,962 sq ft



Ground Floor



First Floor



Simpsons Witney Branch

4 Langdale Court Witney, Oxfordshire - OX28 6AD

01993 835030 • witney@simpsonsproperty.com • www.simpsonsproperty.com/