



1a Hailey Road, Witney



1a Hailey Road

A fabulous three-bedroom end-of-terrace home positioned in a highly sought-after location within walking distance of all local amenities.

Council Tax band: D

Tenure: Freehold

EPC Energy Efficiency Rating: C

EPC Environmental Impact Rating: C

- A fabulous end-of-terrace three-bedroom home located in a sought-after location within walking distance of all local amenities.
- Westerly-facing rear garden.
- Garage and off-street parking.
- Three double bedrooms, master bedroom with ensuite shower room.
- Family bathroom with bath and shower.
- Sitting room with feature fireplace.





Approximate Gross Internal Area
Ground Floor = 52.8 sq m / 568 sq ft
First Floor = 43.9 sq m / 472 sq ft
Garage = 13.1 sq m / 141 sq ft
Total = 109.8 sq m / 1,181 sq ft

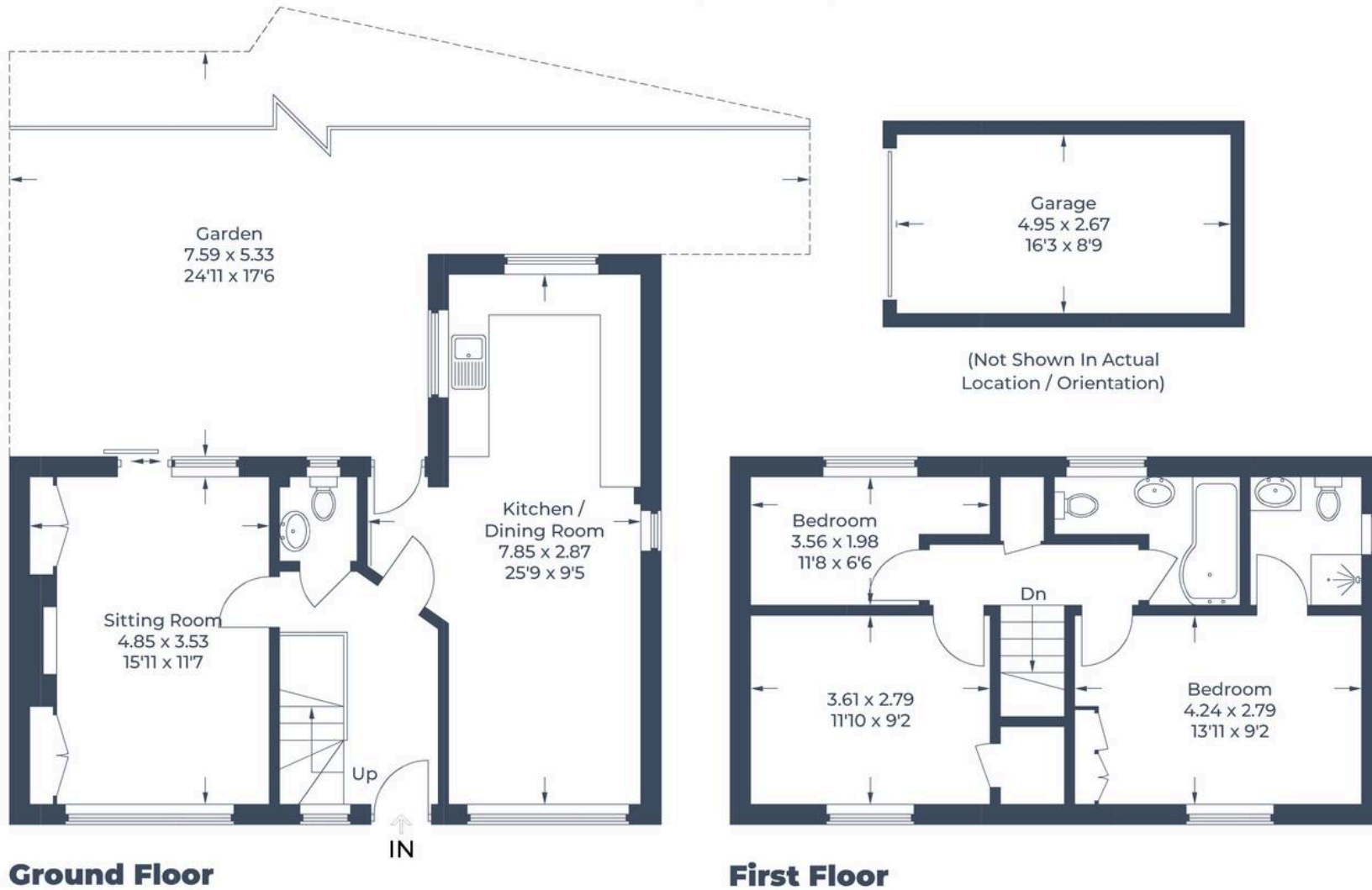


Illustration for identification purposes only,
measurements are approximate, not to scale.
© CJ Property Marketing Produced for Simpsons



Simpsons Witney Branch

4 Langdale Court Witney, Oxfordshire - OX28 6AD

01993 835030 • witney@simpsonsproperty.com • www.simpsonsproperty.com/