



57 Farmers Close, Witney

Guide Price £425,000



57 Farmers Close

Witney, Witney

Brought to the market with no onward chain is this nicely positioned four-bedroom link-detached home situated on a corner plot on the popular Farmers Close.

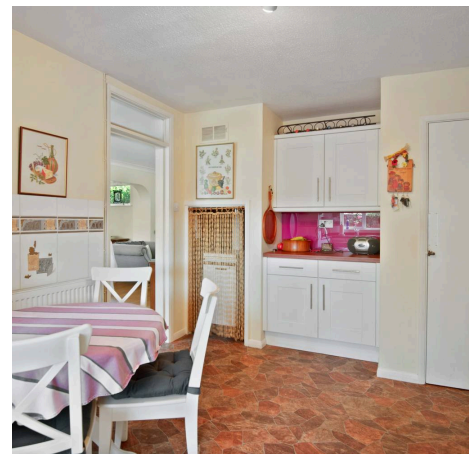
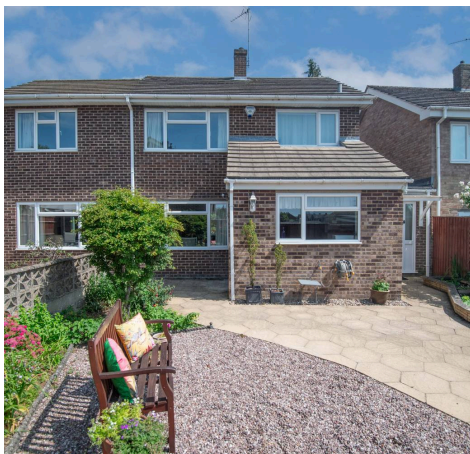
Council Tax band: D

Tenure: Freehold

EPC Energy Efficiency Rating: E

EPC Environmental Impact Rating:

- Brought to the market with the certainty of no onward chain.
- A nicely positioned link-detached four-bedroom home situated on a corner plot on popular Farmers Close.
- Much improved by the current owners the home has been extended and offers a purchaser versatile accommodation across two floors.
- Garage and off-street parking.
- Kitchen with fully integrated appliances.
- Open plan sitting/dining room with double aspect windows.
- Four spacious bedrooms including a jack and jill ensuite to the main bedroom.
- Westerly facing rear garden.

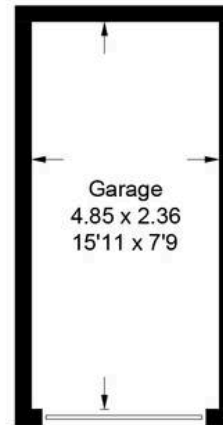


57 Farmers Close - Witney

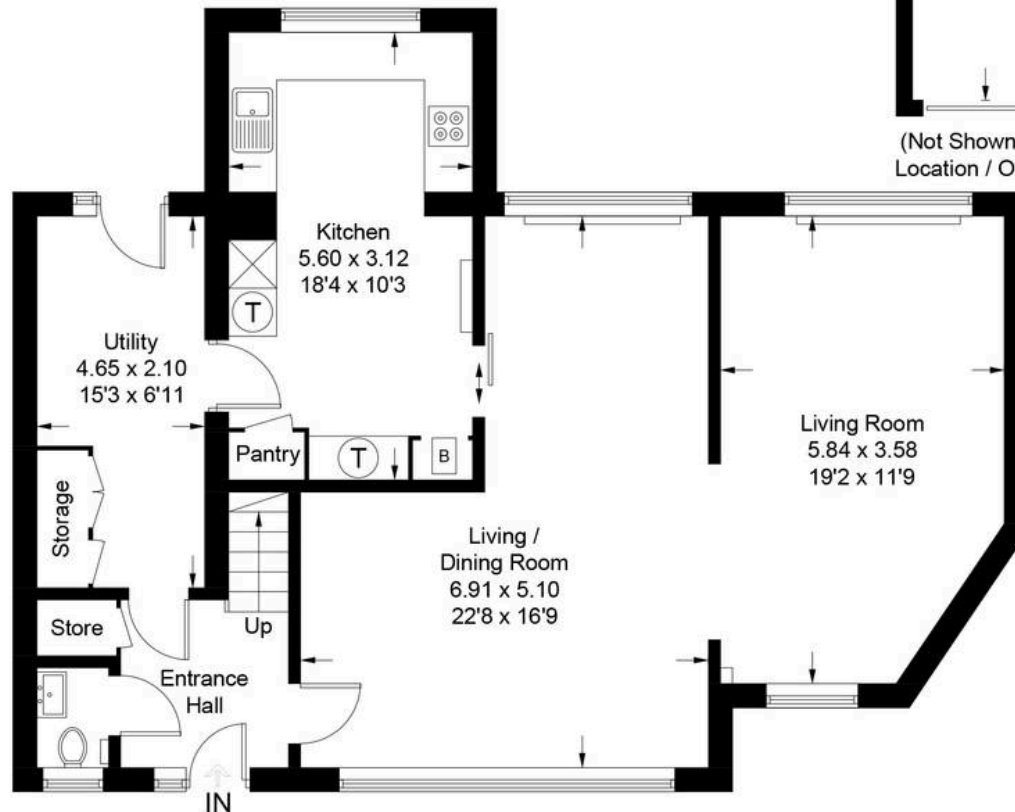
Approximate Gross Internal Area = 145.1 sq m / 1562 sq ft

Garage= 11.4 sq m / 123 sq ft

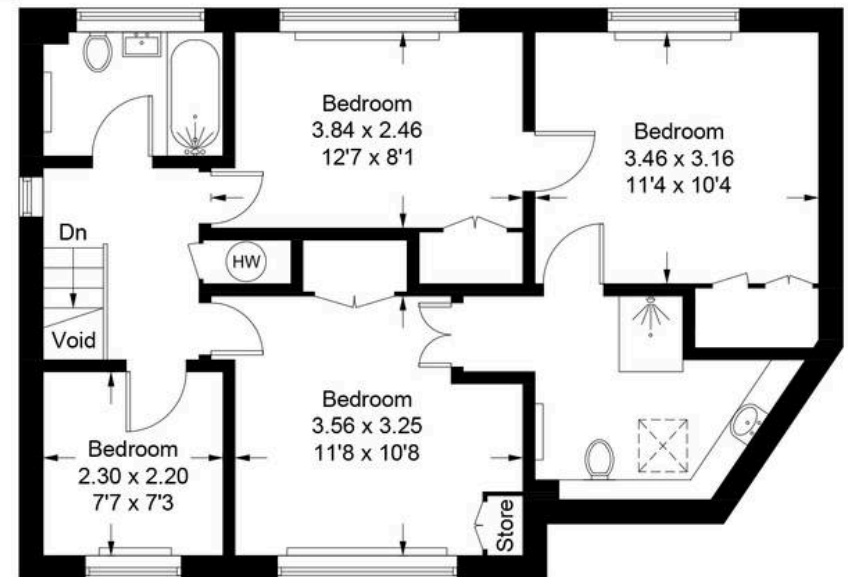
Total = 156.5 sq m / 1685 sq ft



(Not Shown In Actual
Location / Orientation)



Ground Floor



First Floor

Illustration for identification purposes only, measurements are approximate,
not to scale. Fourlabs.co © (ID1222618)



Simpsons Witney Branch

4 Langdale Court Witney, Oxfordshire - OX28 6AD

01993 835030 • witney@simpsonsproperty.com • www.simpsonsproperty.com/