



9 Bennett Road, Faringdon

Faringdon

Simpsons
The Proactive Agent

£250,000

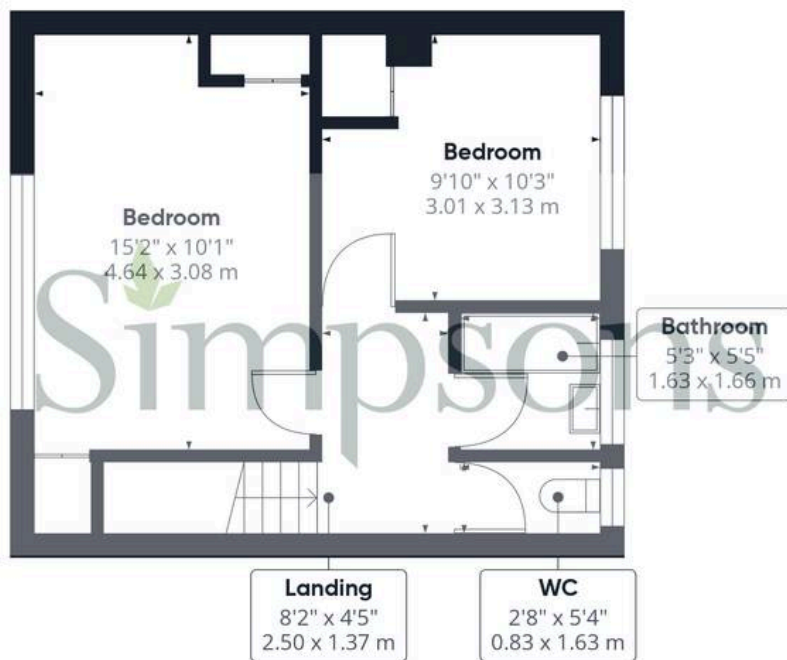


SCAN THE
QR CODE
FOR DETAILS





Floor 0



Floor 1

Approximate total area⁽¹⁾

710 ft²

65.9 m²

(1) Excluding balconies and terraces

Calculations reference the RICS IPMS 3C standard. Measurements are approximate and not to scale. This floor plan is intended for illustration only.

GIRAFFE360

9 Bennett Road

Faringdon, Faringdon

Council Tax band: C

Tenure: Freehold

- No Onward Chain
- Scope to Extend STP
- Walking Distance to Local Amenities



