



81 Burwell Meadow, Witney



81 Burwell Meadow

A beautifully presented four-bedroom link detached home located on the popular road of Burwell Meadow.

Council Tax band: D

Tenure: Freehold

EPC Energy Efficiency Rating: C

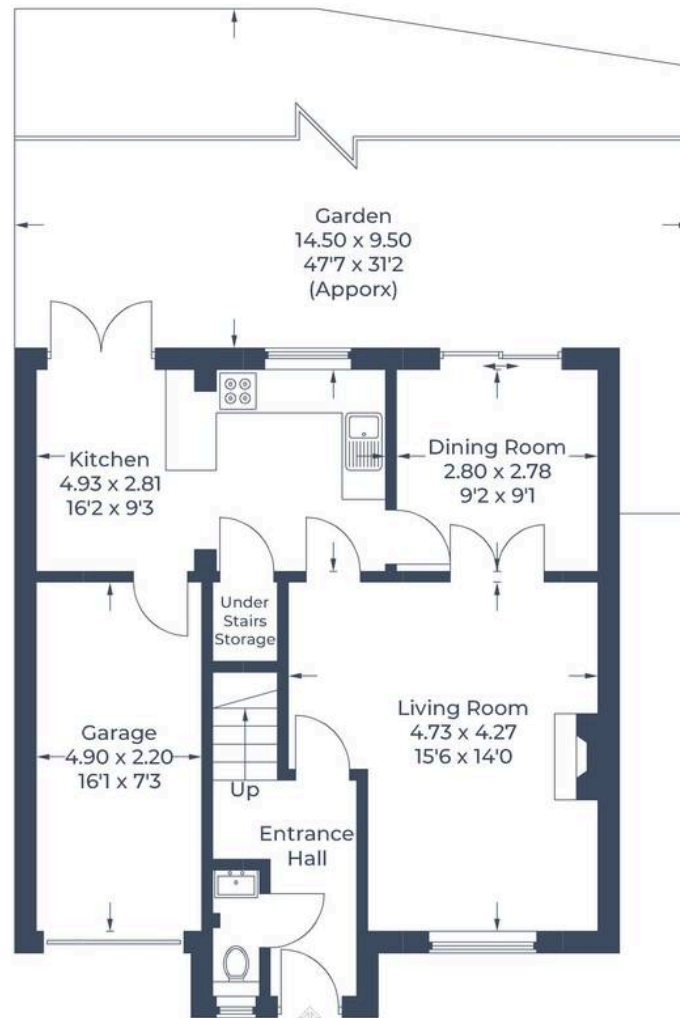
EPC Environmental Impact Rating: C

- A beautifully presented four-bedroom link detached house situated on the popular road of Burwell Meadow within walking distance of all local amenities.
- Garage and off-street parking space.
- Sitting room with double doors leading into the dining room and feature fireplace.
- Open plan kitchen/diner with french doors leading to the garden.
- Master bedroom with stylish ensuite.
- Contemporary bathroom with bath and shower.





Approximate Gross Internal Area
Ground Floor = 63.2 sq m / 680 sq ft
First Floor = 59.2 sq m / 637 sq ft
Total = 122.4 sq m / 1,317 sq ft



Ground Floor



First Floor

Illustration for identification purposes only,
measurements are approximate, not to scale.
© CJ Property Marketing Produced for Simpsons



Simpsons Witney Branch

4 Langdale Court Witney, Oxfordshire - OX28 6AD

01993 835030 • witney@simpsonsproperty.com • www.simpsonsproperty.com/