



68 Sherbourne Road, Witney



68 Sherbourne Road

A beautifully presented four-bedroom detached home located on the popular Deer Park development within walking distance of all local amenities.

Council Tax band: E

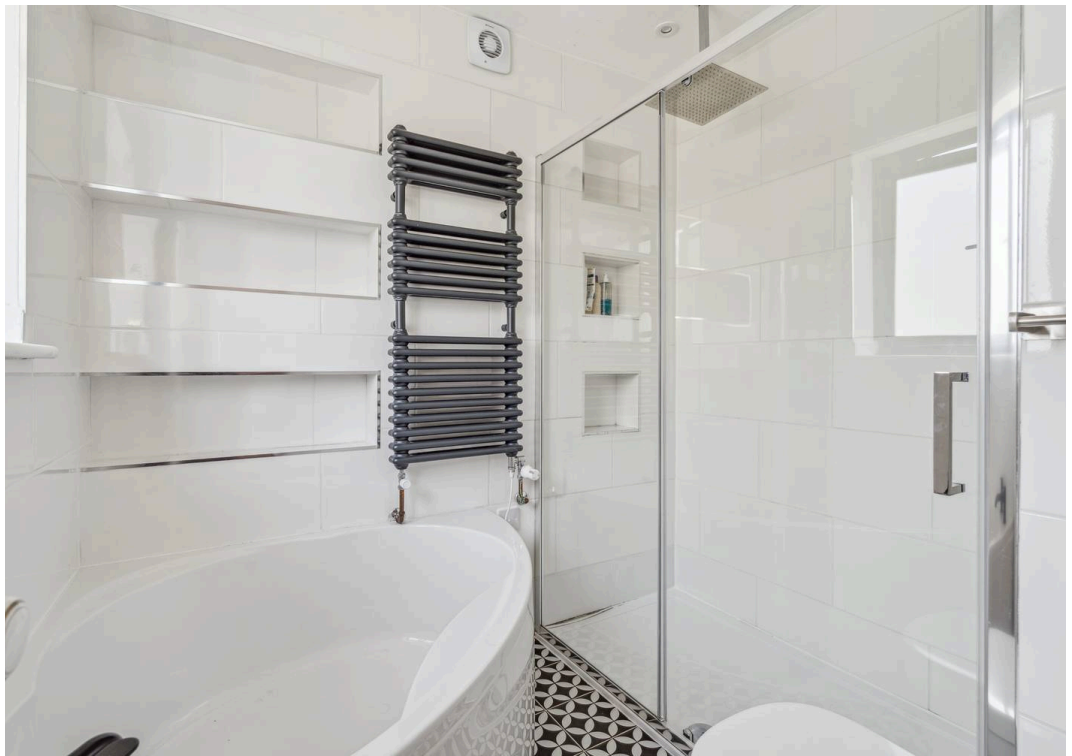
Tenure: Freehold

EPC Energy Efficiency Rating: D

EPC Environmental Impact Rating: E

- A beautifully presented four-bedroom detached home located on the popular Deer Park development.
- Much improved by the current owners, this home provides a purchaser with versatile accommodation across three floors.
- Open plan kitchen/dining/living room with integrated appliances and underfloor heating.
- Conservatory with doors leading out to the south facing garden.
- Impressive master bedroom spanning the entire length of the house with modern ensuite and built in wardrobes.
- Off-street parking.

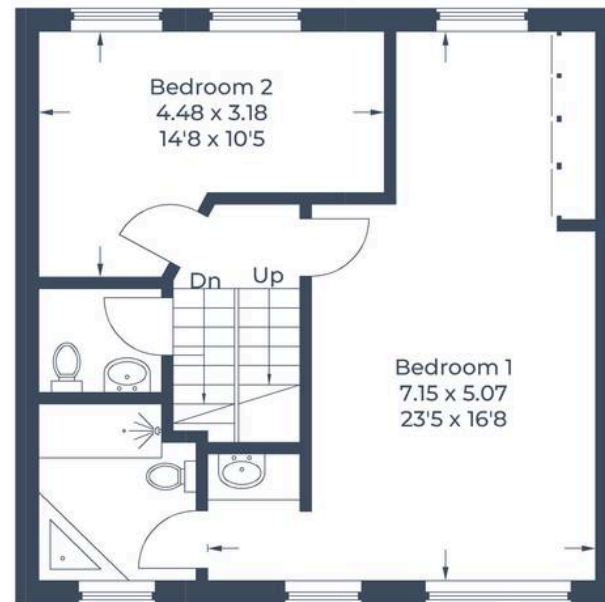




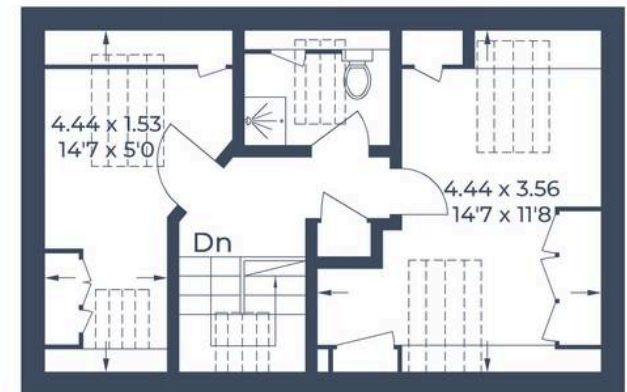
Approximate Gross Internal Area
 Ground Floor = 66.3 sq m / 714 sq ft
 First Floor = 51.8 sq m / 557 sq ft
 Second Floor = 32.2 sq m / 347 sq ft
 Total = 150.3 sq m / 1,618 sq ft



Ground Floor



First Floor



Second Floor

Illustration for identification purposes only,
 measurements are approximate, not to scale.



Simpsons Witney Branch

4 Langdale Court Witney, Oxfordshire - OX28 6AD

01993 835030 • witney@simpsonsproperty.com • www.simpsonsproperty.com/