



4 Guild Close, Witney





## 4 Guild Close

An immaculately presented two-bedroom ground floor apartment built by locally renowned developers - Abbey Homes.

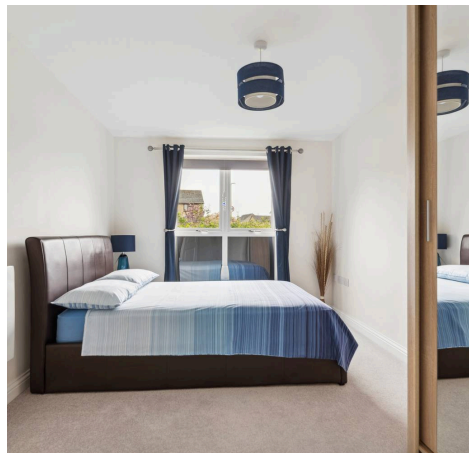
Council Tax band: C

Tenure: Leasehold

EPC Energy Efficiency Rating: C

EPC Environmental Impact Rating: B

- A beautifully presented two-bedroom ground floor apartment built by highly-renowned developers Abbey Homes.
- Modern kitchen with high-quality integrated appliances.
- Allocated off-street parking and additional visitor parking.
- Master bedroom with ensuite shower room.
- Stylish main bathroom with bath.
- Open plan kitchen/dining/living room.



Approximate Gross Internal Area = 71.1 sq m / 765 sq ft

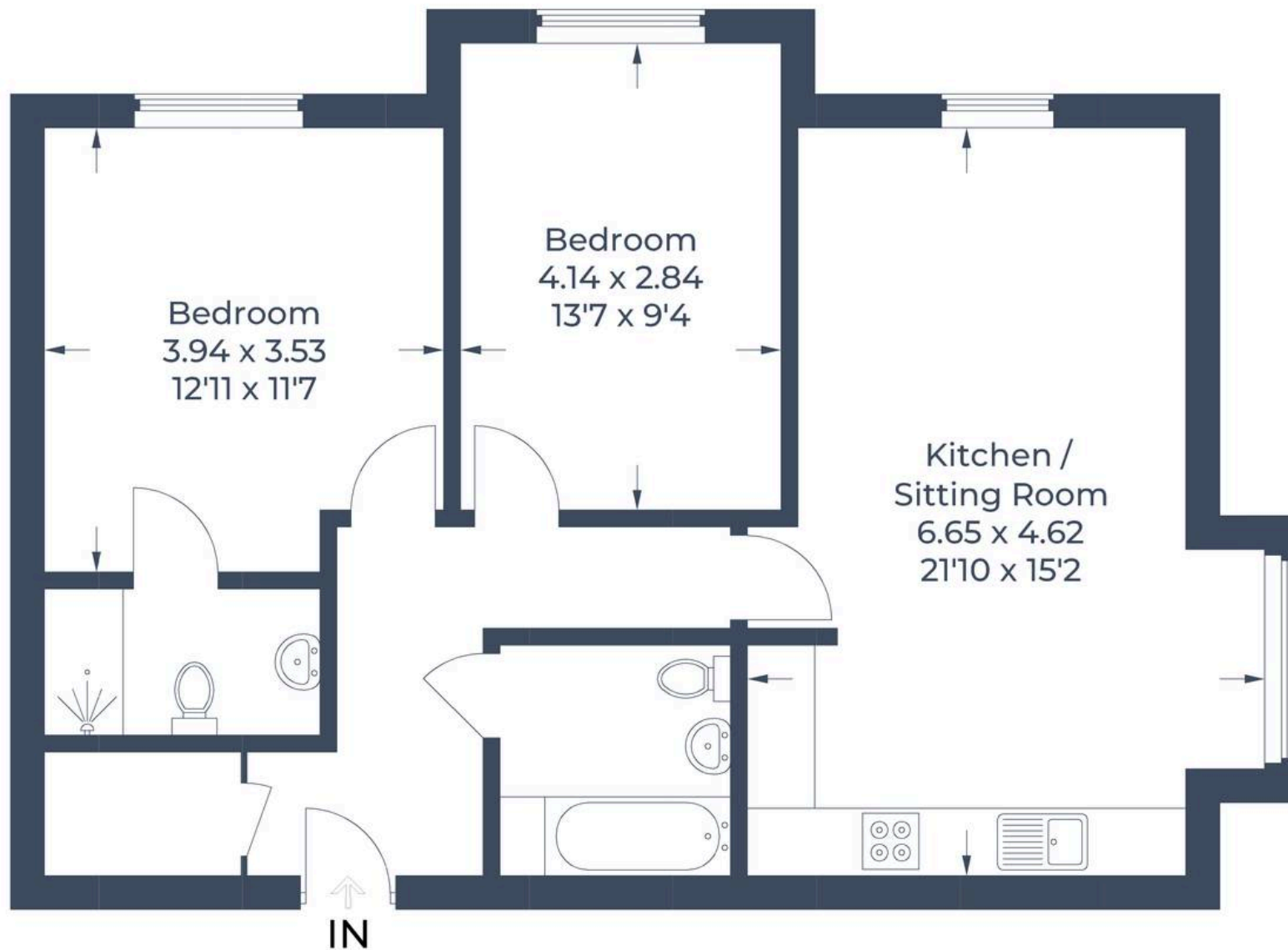


Illustration for identification purposes only,  
measurements are approximate, not to scale.  
© CJ Property Marketing Produced for Simpsons



## Simpsons Witney Branch

4 Langdale Court Witney, Oxfordshire - OX28 6AD

01993 835030 • [witney@simpsonsproperty.com](mailto:witney@simpsonsproperty.com) • [www.simpsonsproperty.com/](http://www.simpsonsproperty.com/)