

Poppy Fields Leadent Drive, Childrey

Wantage

Simpsons
The Proactive Agent

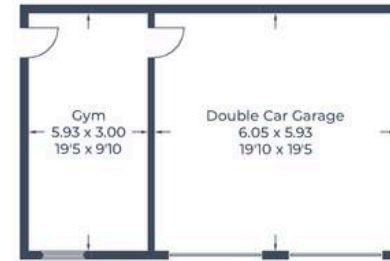
Guide Price £2,200,000



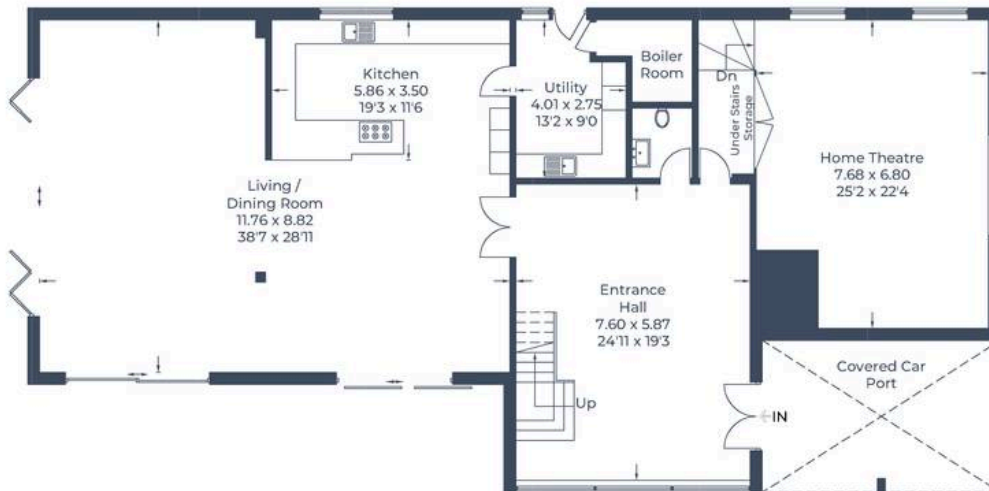
SCAN THE
QR CODE
FOR DETAILS



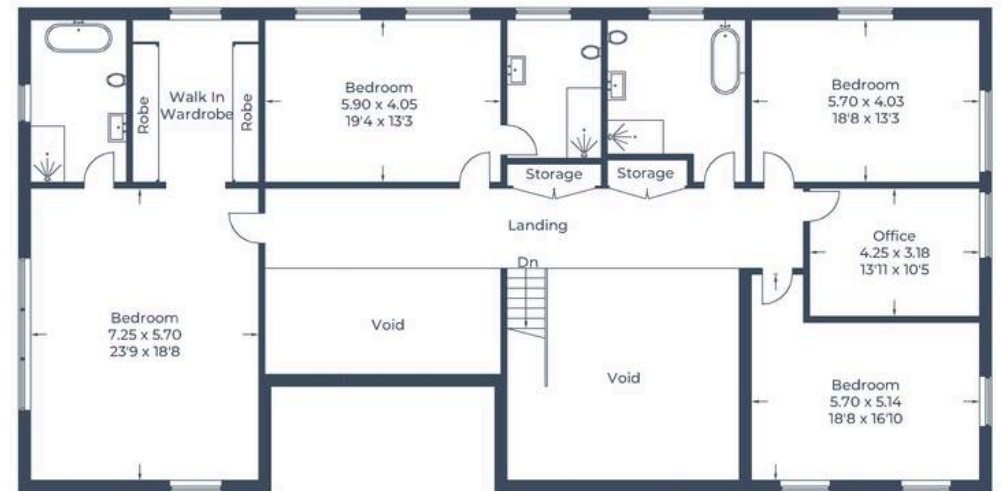
Approximate Gross Internal Area
 Ground Floor = 220.1 sq m / 2,369 sq ft
 First Floor = 208.9 sq m / 2,248 sq ft
 Gym / Double Garage = 54.7 sq m / 589 sq ft
 Total = 483.7 sq m / 5,206 sq ft
 (Excluding Void)



(Not Shown In Actual
Location / Orientation)



Ground Floor



First Floor

Poppy Fields Leadent Drive

Childrey, Wantage

Nestled in the heart of the picturesque countryside, this exceptional 5-bedroom detached barn conversion offers a harmonious blend of rustic charm and modern luxury.

Council Tax band: TBD

Tenure: Freehold



SCAN THE
QR CODE
TO BOOK
YOUR VIEWING

