



83 Milton Road, Sutton Courtenay

Abingdon

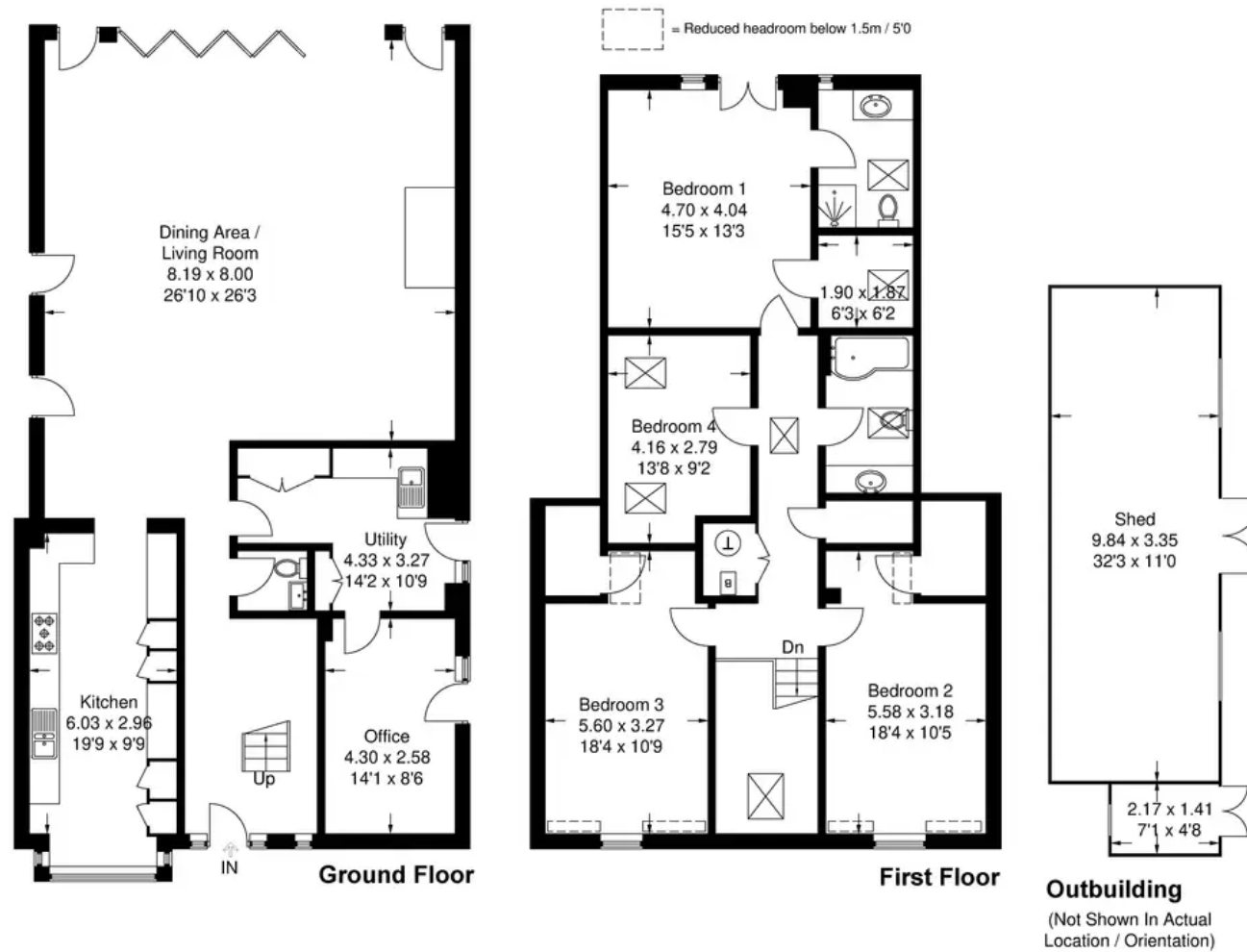
Simpsons
The Proactive Agent



SCAN THE
QR CODE
FOR DETAILS



Approximate Gross Internal Area
(Excluding Sheds)
Ground Floor = 134.8 sq m / 1,451 sq ft
First Floor = 108.6 sq m / 1,169 sq ft
Total = 243.4 sq m / 2,620 sq ft



This plan is for layout guidance only. Not drawn to scale unless stated. Windows and door openings are approximate. Whilst every care is taken in the preparation of this plan, please check all dimensions, shapes and compass bearings before making any decisions reliant upon them.

© CJ Property Marketing Ltd Produced for Simpsons

83 Milton Road

Sutton Courtenay, Abingdon

Exceptional quality and the finest workmanship combine to create a stunning, open plan 2600sqft family home of wonderful proportions, in the picturesque South Oxfordshire Village of Sutton Courtenay.

- Converted Garage, Presently Utilised As A Home Office.
- Designed And Built By The Present Owner To Meet The Needs And Requirements For Todays Modern Family.
- Four Double Bedrooms.
- Fully Fitted Luxury Kitchen With Integrated Appliances, Utility Room And Separate WC.
- 32ft Timber Built Outbuilding With Light And Power, Suitable For Various Uses In Addition To Storage.
- Under Floor Heating To All Bathrooms
- Largely Open Plan With Zoned Underfloor Heating And Extensive Bi-folding Patio Doors Opening Into A Well Maintained South Facing Garden.



SCAN THE
QR CODE
TO BOOK
YOUR VIEWING



