



Yew Tree Cottage, Peaks Lane, Stonesfield



Yew Tree Cottage, Peaks Lane

A beautifully presented three-bedroom detached home located on a quiet lane in the popular village of Stonesfield within walking distance of amenities including village shop, pub and primary school.

Council Tax band: E

Tenure: Freehold

EPC Energy Efficiency Rating: C

EPC Environmental Impact Rating: C

- A beautifully presented three-bedroom detached home located on a peaceful road in the popular village of Stonesfield.
- Gated driveway with garage and plenty of off-street parking.
- Reception room with feature fireplace and log burner.
- Three bedrooms, two with built in wardrobes.
- Master bedroom with modern ensuite shower room.
- Impressive kitchen with integrated appliances, boiling water tap and range cooker.
- Landscaped rear garden with summer house.
- Within walking distance of local amenities including pub, village shop and Stonesfield Primary School.

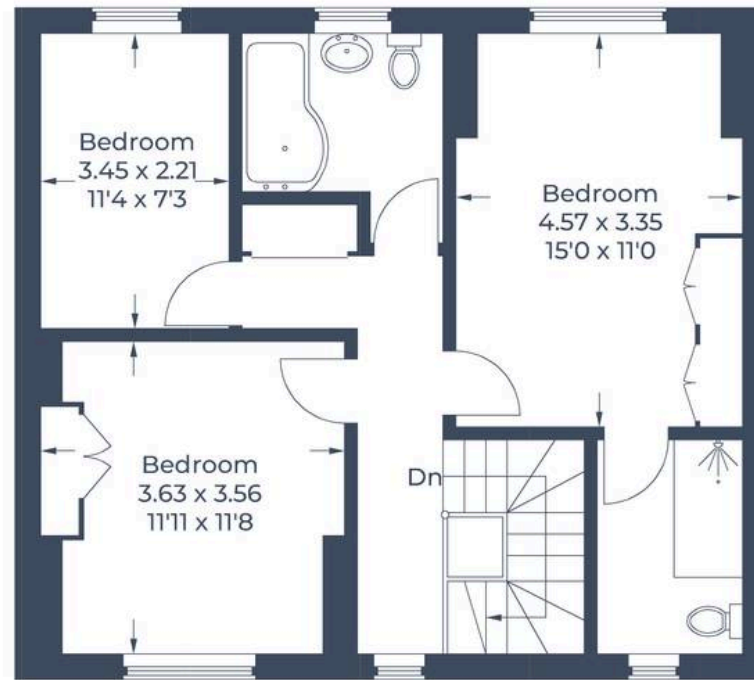




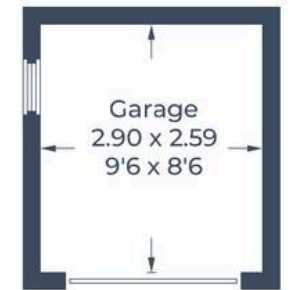
Approximate Gross Internal Area
Ground Floor = 72.3 sq m / 778 sq ft
First Floor = 59.4 sq m / 639 sq ft
Garage = 7.5 sq m / 81 sq ft
Total = 139.2 sq m / 1,498 sq ft



Ground Floor



First Floor



(Not Shown In Actual
Location / Orientation)



Simpsons Witney Branch

4 Langdale Court Witney, Oxfordshire - OX28 6AD

01993 835030 • witney@simpsonsproperty.com • www.simpsonsproperty.com/