



## 10 Squires House Smiths Wharf, Wantage

Wantage

**Simpsons**  
The Proactive Agent

Guide Price £205,000



SCAN THE  
QR CODE  
FOR DETAILS





# 10 Squires House

Approximate Gross Internal Area = 81.0 sq m / 872 sq ft

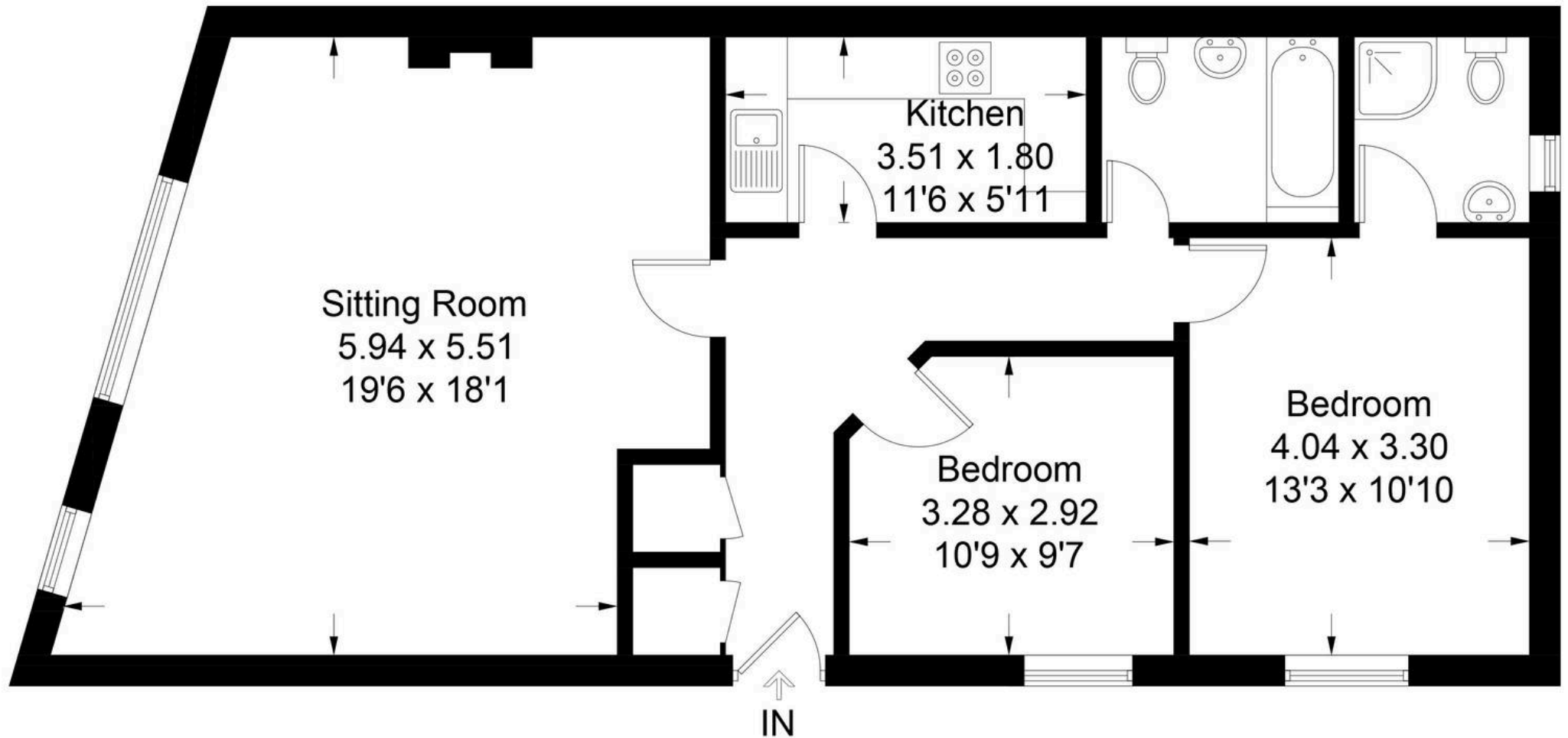


Illustration for identification purposes only, measurements are approximate, not to scale. Fourlabs.co © (ID1180951)

# 10 Squires House Smiths Wharf

Wantage, Wantage

A spacious two bedroom ground floor apartment just a short walk to the Wantage Market Place.

Council Tax band: C

Tenure: Leasehold

- Spacious Ground Floor Two Bedroom Apartment With No Onward Chain
- Conveniently Located Close To Wantage Market Place
- With Allocated Parking For One Car Description
- Two Bathrooms And Two Double Bedrooms



SCAN THE  
QR CODE  
**TO BOOK**  
YOUR VIEWING





