



16 Fallowfield Crescent, Witney



16 Fallowfield Crescent

A beautifully presented three-bedroom semi-detached home located in a peaceful position on the popular Madley Park development overlooking woodland.

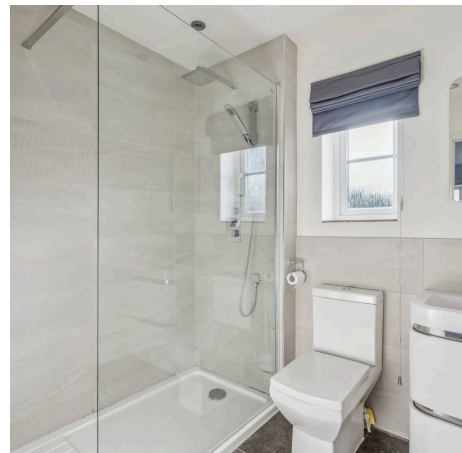
Council Tax band: D

Tenure: Freehold

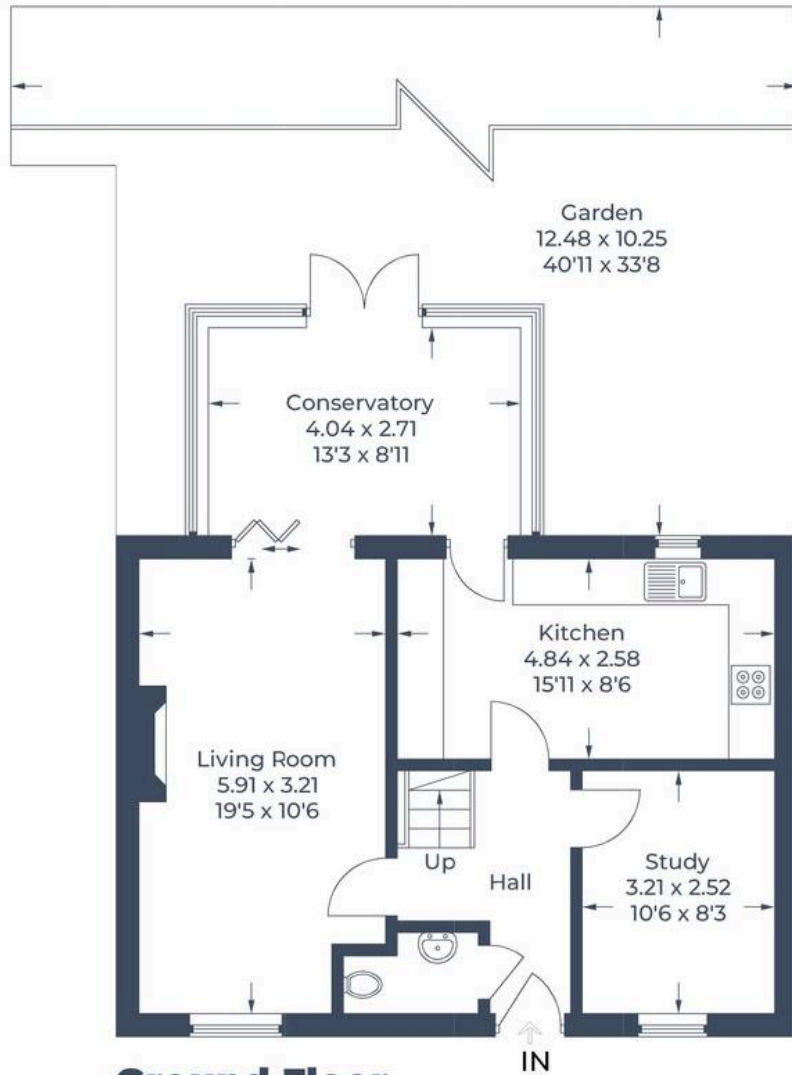
EPC Energy Efficiency Rating: C

EPC Environmental Impact Rating: C

- A beautifully presented three-bedroom semi-detached home located in a peaceful position on Madley Park overlooking woodland.
- Modern kitchen/diner with integrated appliances.
- Sitting room with feature fireplace.
- Master bedroom with ensuite shower room.
- Conservatory with doors leading out to the south-facing rear garden.
- Garage and gated off-street parking.



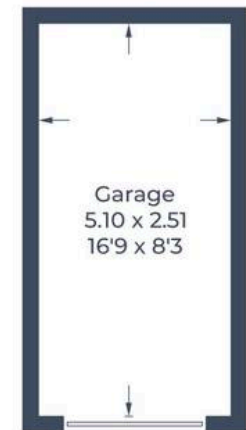
Approximate Gross Internal Area
 Ground Floor = 61.2 sq m / 659 sq ft
 First Floor = 48.7 sq m / 524 sq ft
 Garage = 12.7 sq m / 137 sq ft
 Total = 122.6 sq m / 1,320 sq ft



Ground Floor



First Floor



(Not Shown In Actual
Location / Orientation)



Simpsons Witney Branch

4 Langdale Court Witney, Oxfordshire - OX28 6AD

01993 835030 • witney@simpsonsproperty.com • www.simpsonsproperty.com/