



22 Mott Close, Witney



22 Mott Close

Offered to market at a 50% share is this fabulous two-bedroom end of terrace home located on the popular Windrush development within walking distance of all local amenities.

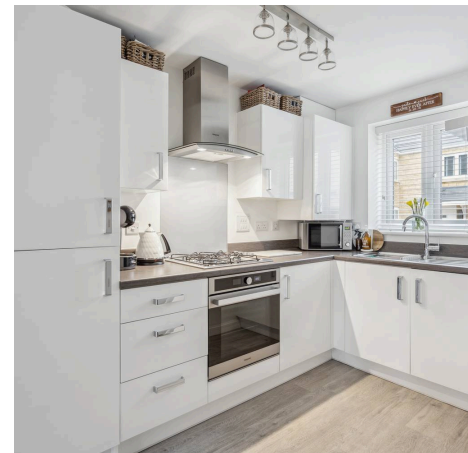
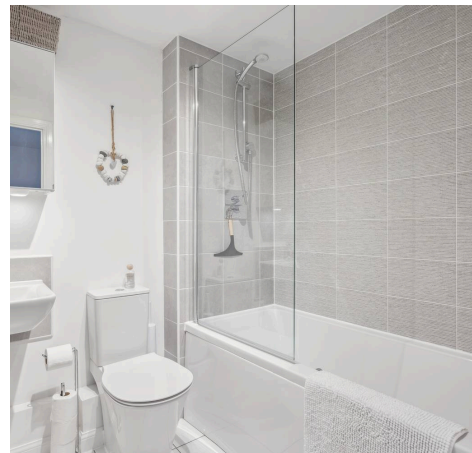
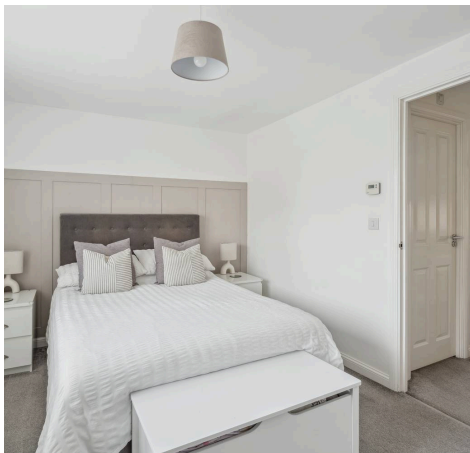
Council Tax band: C

Tenure: Leasehold

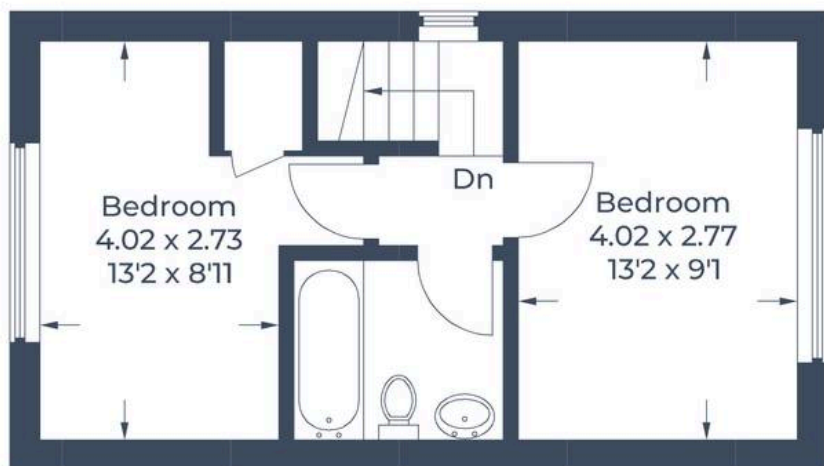
EPC Energy Efficiency Rating: B

EPC Environmental Impact Rating:

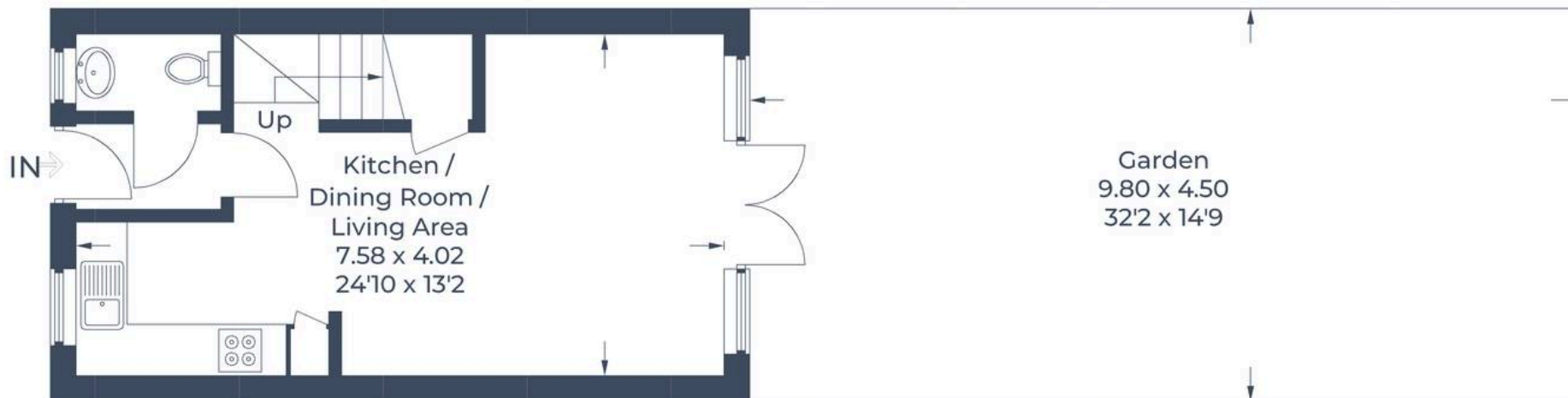
- Offered for sale at a 50% share.
- A beautifully presented two-bedroom end of terrace home located on the popular Windrush development.
- Open plan kitchen/dining/living room with integrated appliances and french doors leading to the garden.
- Two spacious double bedrooms.
- Allocated parking.
- Landscaped rear garden with shed.



Approximate Gross Internal Area
Ground Floor = 30.7 sq m / 330 sq ft
First Floor = 30.4 sq m / 327 sq ft
Total = 61.1 sq m / 657 sq ft



First Floor



Ground Floor

Illustration for identification purposes only,
measurements are approximate, not to scale.

© CJ Property Marketing



Simpsons Witney Branch

4 Langdale Court Witney, Oxfordshire - OX28 6AD

01993 835030 • witney@simpsonsproperty.com • www.simpsonsproperty.com/