



111 Preston Road, Abingdon

Abingdon

Simpsons
The Proactive Agent

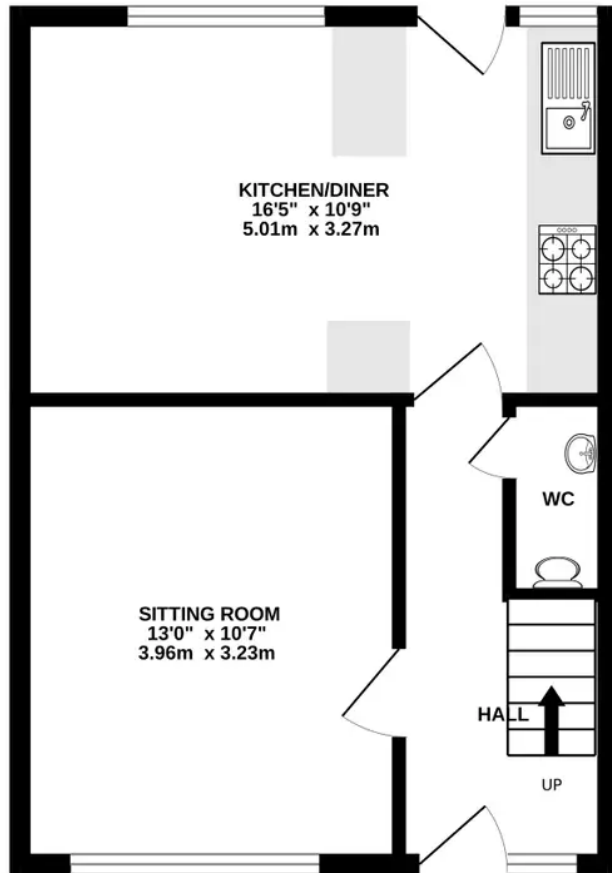
Guide Price £290,000



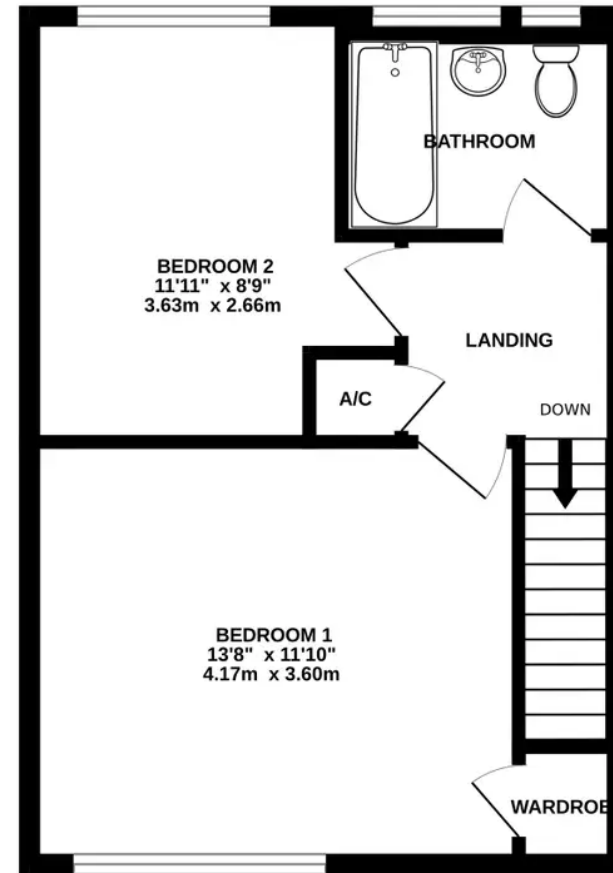
SCAN THE
QR CODE
FOR DETAILS



GROUND FLOOR
390 sq.ft. (36.2 sq.m.) approx.



1ST FLOOR
386 sq.ft. (35.9 sq.m.) approx.



97 PRESTON ROAD, ABINGDON, OXON OX14 5NJ

TOTAL FLOOR AREA : 776 sq.ft. (72.1 sq.m.) approx.

Whilst every attempt has been made to ensure the accuracy of the floorplan contained here, measurements of doors, windows, rooms and any other items are approximate and no responsibility is taken for any error, omission or mis-statement. This plan is for illustrative purposes only and should be used as such by any prospective purchaser. The services, systems and appliances shown have not been tested and no guarantee as to their operability or efficiency can be given.
Made with Metropix ©2023

111 Preston Road

Abingdon, Abingdon

This lovely family home is hidden away at the end of a cul de sac and benefits from a larger than average front and rear garden.

Council Tax band: C

Tenure: Freehold

- Large front and rear gardens with direct access to driveway parking for two cars.
- Gas central heating.
- Open plan kitchen diner with integrated breakfast bar.
- walking distance to Caldecott Primary School, the town centre and River Thames.
- Brick built garden shed.
- Downstairs WC.



SCAN THE
QR CODE
TO BOOK
YOUR VIEWING



