



141 Mayfield Avenue, Grove

Wantage

Simpsons

The Proactive Agent

Guide Price £375,000

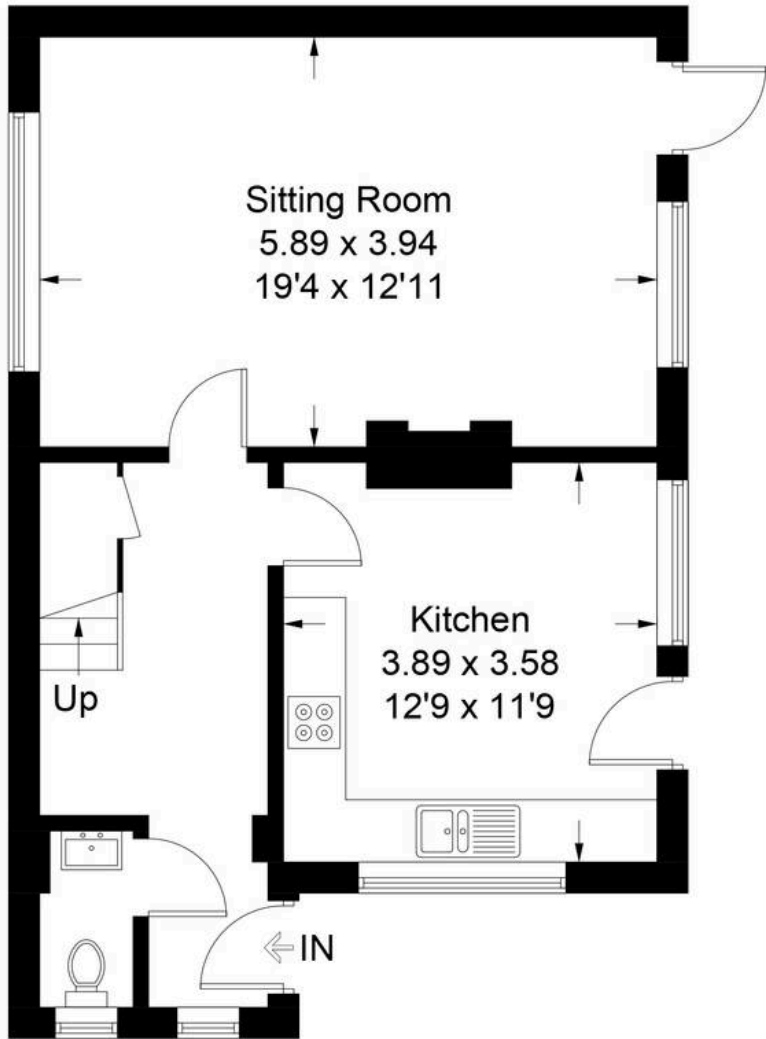


SCAN THE
QR CODE
FOR DETAILS

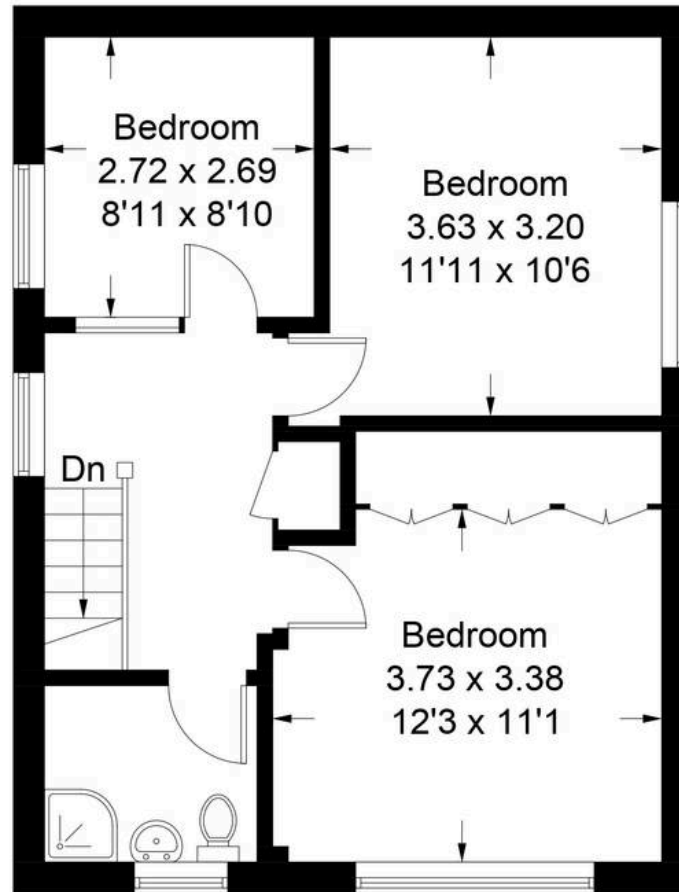


141 Mayfield Avenue

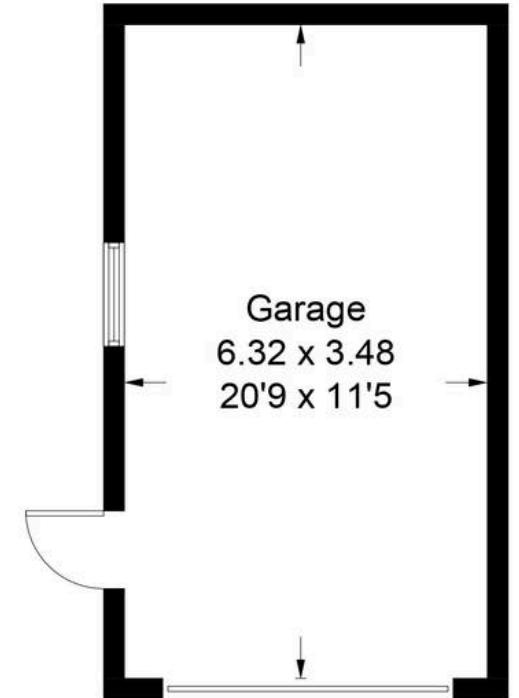
Approximate Gross Internal Area = 98.1 sq m / 1056 sq ft
Garage = 22.0 sq m / 237 sq ft
Total = 120.1 sq m / 1293 sq ft



Ground Floor



First Floor



(Not Shown In Actual Location / Orientation)

141 Mayfield Avenue

Grove, Wantage

A well-presented three bedroom semi-detached property within walking distance of local amenities and shops and with no onward chain.

Council Tax band: E

Tenure: Freehold

- No Onward Chain
- Scope To Extend & Enhance STP
- Sought After Location Close To Shops & Local Amenities
- Three Good Sized Bedrooms
- Garage & Off-Street Parking



SCAN THE
QR CODE
TO BOOK
YOUR VIEWING



