



28 Brunel Crescent, Grove

Wantage

Simpsons
The Proactive Agent

Guide Price **£415,000**



SCAN THE
QR CODE
FOR DETAILS



Approximate Gross Internal Area
 Ground Floor = 63.3 sq m / 681 sq ft
 First Floor = 41.2 sq m / 443 sq ft
 Garage = 13.7 sq m / 147 sq ft
 Total = 118.2 sq m / 1,271 sq ft (Including Void)

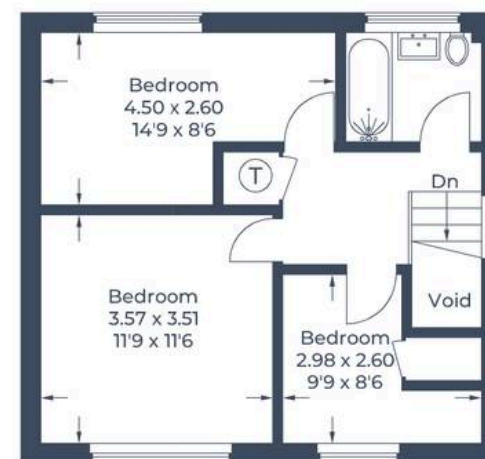
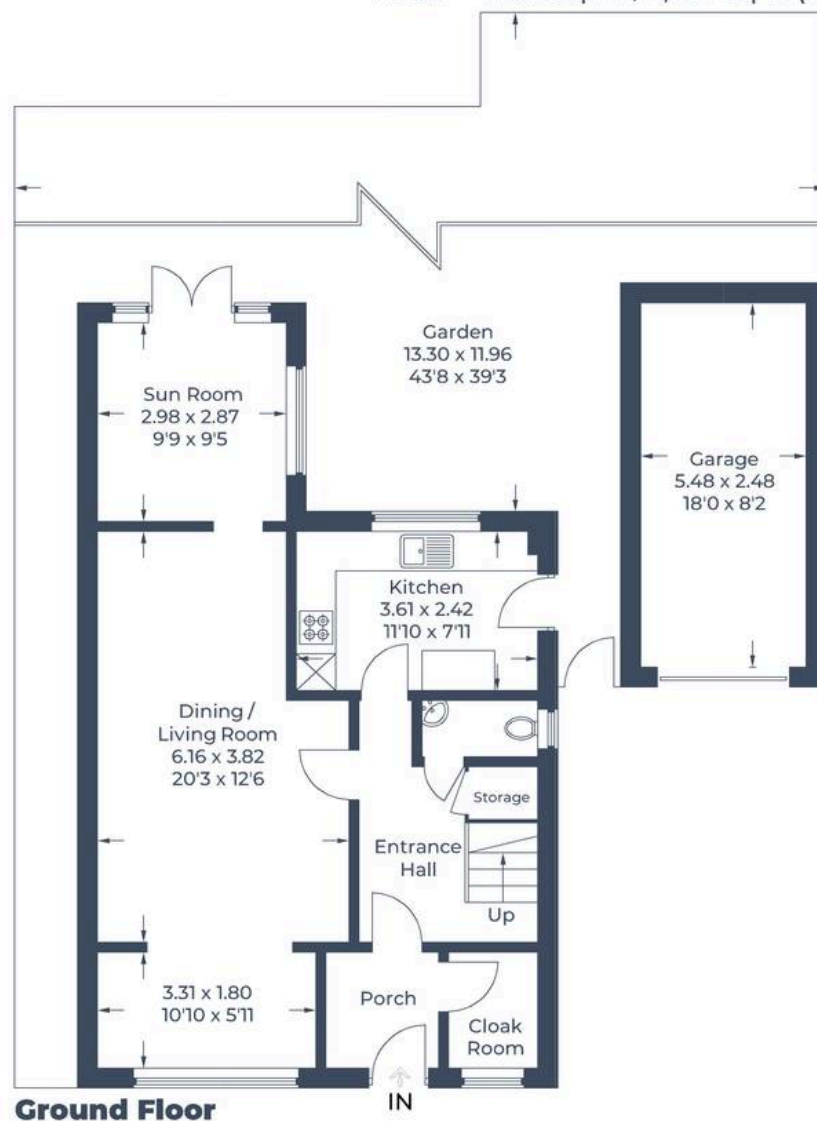


Illustration for identification purposes only,
 measurements are approximate, not to scale.

© CJ Property Marketing Produced for Simpsons

28 Brunel Crescent

Grove, Wantage

A beautifully extended three bedroom detached home in a very popular a quiet cul-de-sac and within close proximity to shops and amenities.

Council Tax band: E

Tenure: Freehold

- Beautifully Presented Accommodation Throughout
- Sought After Cul-De-Sac Location
- Single Garage & Off-Road Parking
- Front & Rear Extensions



SCAN THE
QR CODE
TO BOOK
YOUR VIEWING

