



12 Winfield Drive, Witney



## 12 Winfield Drive

A beautifully presented four-bedroom detached home located on the popular Windrush development within walking distance of local amenities and nearby transport links such as the A40 and S1 bus stop.

Council Tax band: E

Tenure: Freehold

EPC Energy Efficiency Rating: B

EPC Environmental Impact Rating: B

- A beautifully presented four-bedroom detached home located on the popular Windrush development.
- Garage and off-street parking.
- Open plan kitchen/dining room with french doors leading to the garden.
- Four bedrooms, master bedroom with ensuite.
- Two reception rooms to the ground floor.
- Within walking distance of shops, pubs, schools and nearby transport links such as the A40 and S1 bus stop.





Approximate Gross Internal Area  
Ground Floor = 57.3 sq m / 617 sq ft  
First Floor = 56.8 sq m / 611 sq ft  
Garage = 18.0 sq m / 194 sq ft  
Total = 132.1 sq m / 1,422 sq ft

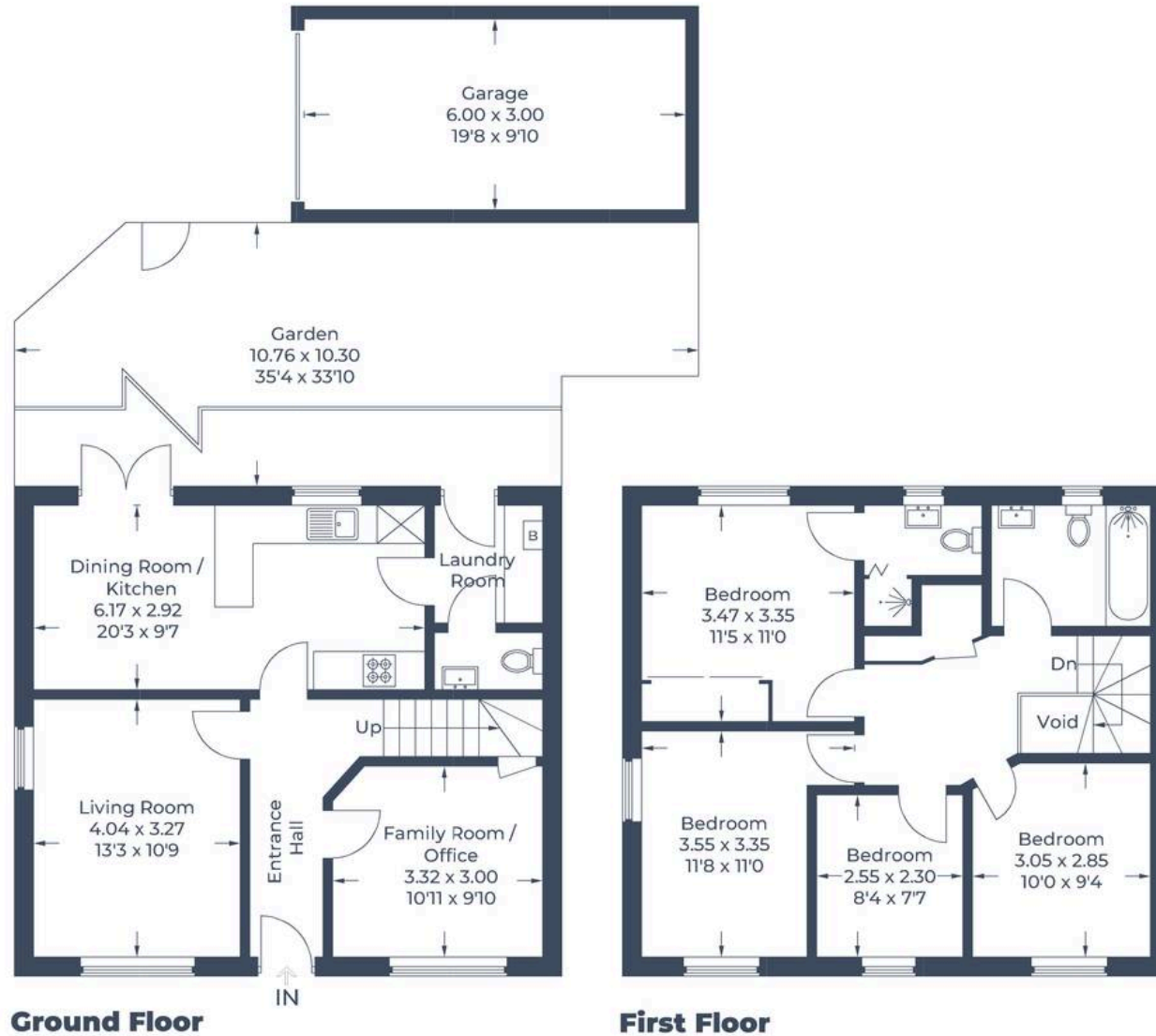


Illustration for identification purposes only,  
measurements are approximate, not to scale.  
© CJ Property Marketing Produced for Simpsons



## Simpsons Witney Branch

4 Langdale Court Witney, Oxfordshire - OX28 6AD

01993 835030 • [witney@simpsonsproperty.com](mailto:witney@simpsonsproperty.com) • [www.simpsonsproperty.com/](http://www.simpsonsproperty.com/)