



## 14 St. Helens Mill, St. Helens Wharf

Abingdon

**Simpsons**  
The Proactive Agent

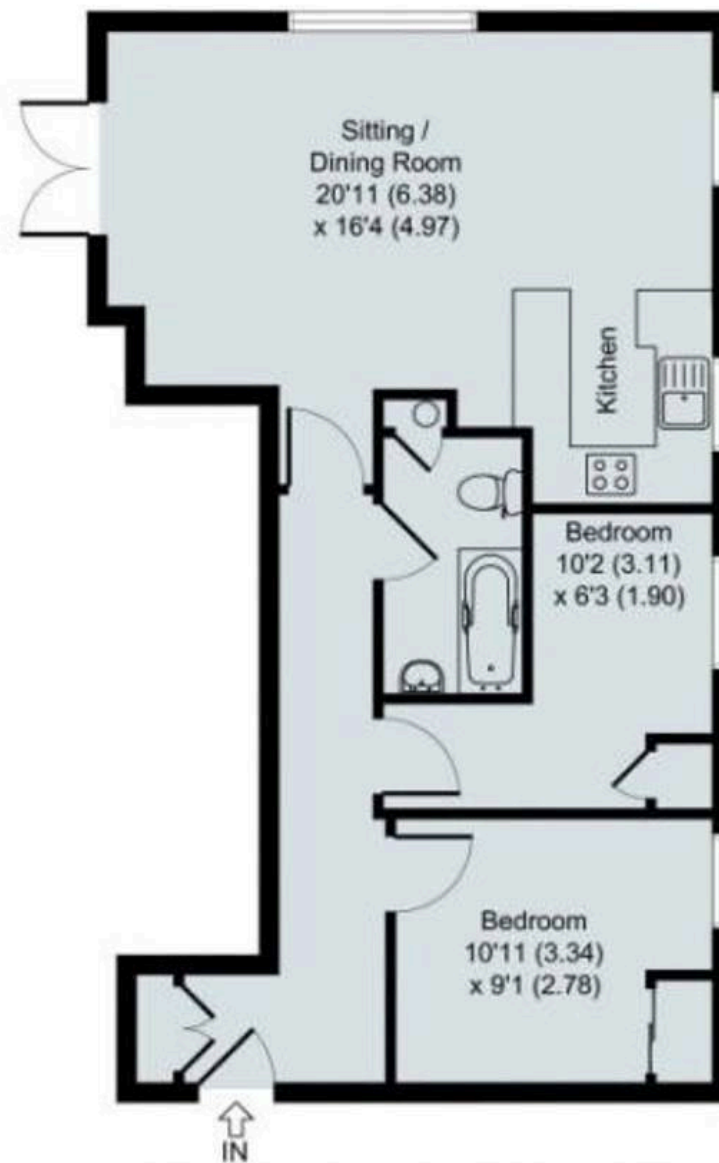
£225,000



SCAN THE  
QR CODE  
FOR DETAILS







APPROX. GROSS INTERNAL FLOOR AREA 635 SQ FT / 59 SQ M



# 14 St. Helens Mill

St. Helens Wharf, Abingdon

A delightful two bedroom apartment in a wonderful, former Granary Mill, with views towards the River Thames and River Ock.

Council Tax band: D

Tenure: Leasehold

- Located in a picturesque, Riverside location at the foot of St Helens Church, this two bedroom property forms part of this former Granary Mill, converted into luxurious apartments in the 1990s.
- A mainly open plan layout, offering light and airy accommodation by virtue of large floor to ceiling windows and a Juliet style balcony, overlooking The River Ock.
- Two well proportioned bedrooms, served by a fully tiled bathroom suite.
- Allocated parking.
- Gas central heating and double glazing
- 120 year leasehold term. Annual service charge of £1,247.14, no ground rent payable. Annual insurance premium of £563.15.
- For sale with no onward chain.
- Vaillant boiler with radiators in all rooms.





