



14 Meadow Court, East Challow

Wantage

**Simpsons**  
The Proactive Agent

Guide Price £725,000

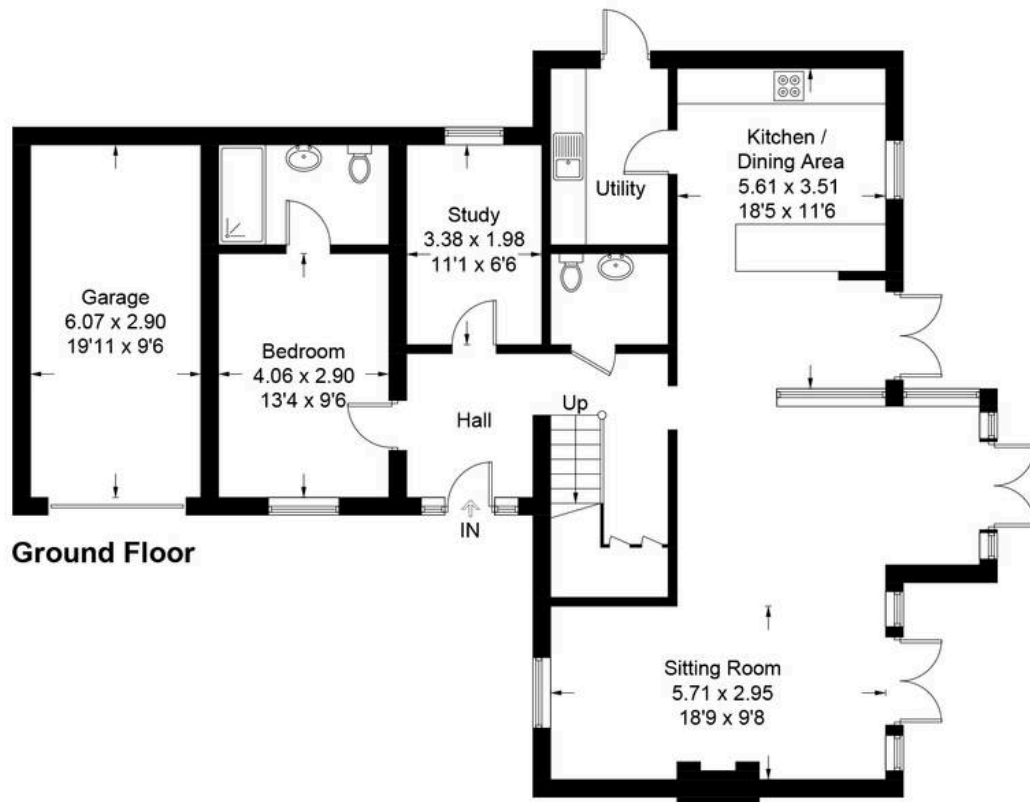


SCAN THE  
QR CODE  
FOR DETAILS

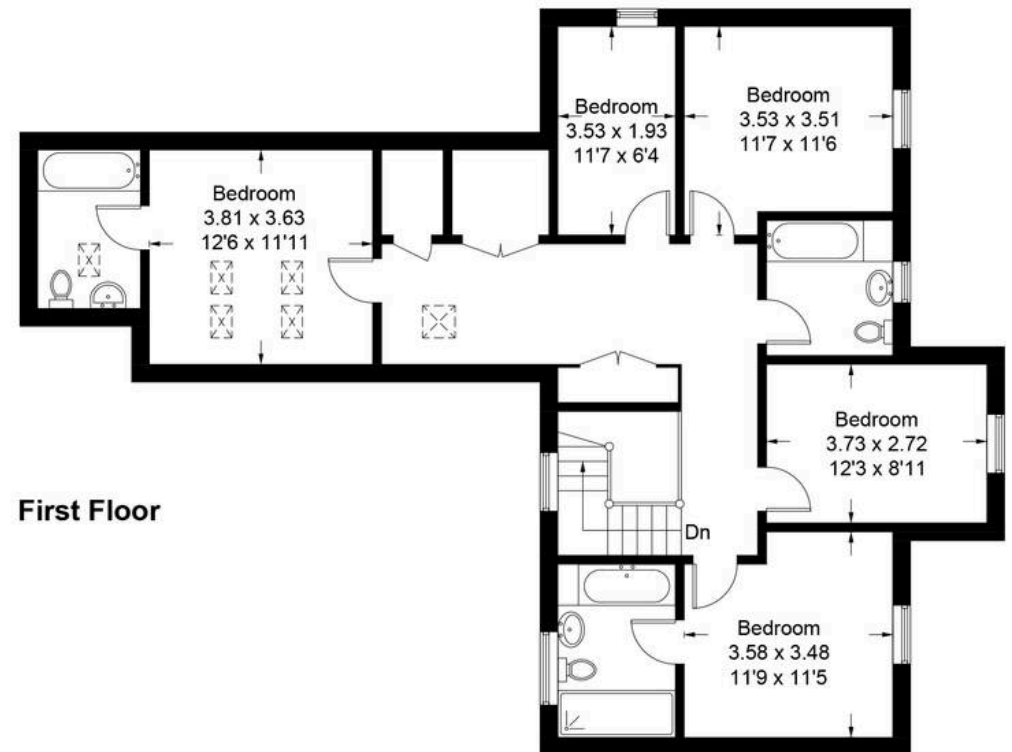


# 14 Meadow Court

Approximate Gross Internal Area = 211.9 sq m / 2281 sq ft  
Garage = 17.4 sq m / 187 sq ft  
Total = 229.3 sq m / 2468 sq ft



Ground Floor



First Floor



# 14 Meadow Court

East Challow, Wantage

Stunning eco-built barn-style home on an exclusive development tucked away on the edge of a village.  
Council Tax band: TBD

Tenure: Freehold

- Beautiful Accommodation Across Two Floors
- Uninterrupted Countryside Surrounding Views
- Patio Doors From Living & Kitchen/ Dining Room Out To The West Facing Garden
- Small & Tucked Away Eco-Build Development
- 6th Bedroom With En-Suite To The Ground Floor
- Over 2400 Sqft Of Accommodation





