



24 Wenrisc Drive, Minster Lovell



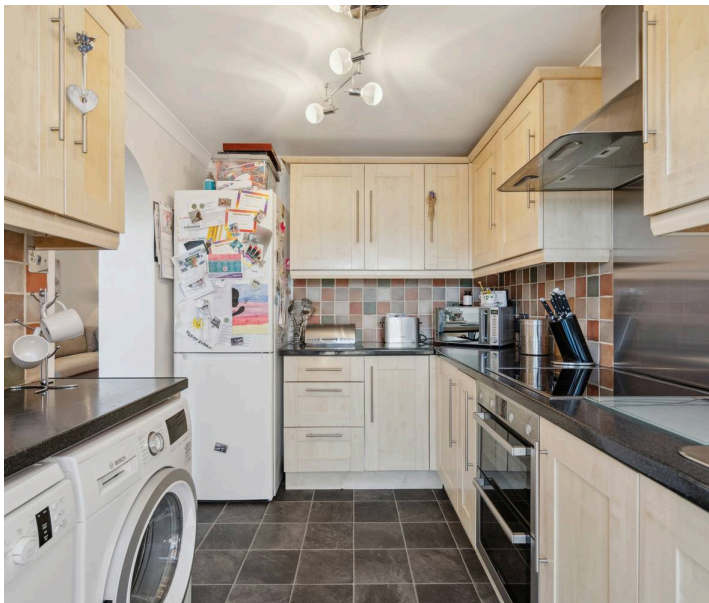
24 Wenrisc Drive

A beautifully presented four-bedroom semi-detached bungalow which has been both extended and much improved by the current owners.

Council Tax band: C

Tenure: Freehold

- A beautifully presented four-bedroom semi-detached bungalow situated in a peaceful position on a popular road in Minster Lovell.
- Open plan sitting/dining room with sliding door leading to the garden.
- Triple garage and off-street parking for two cars.
- Spacious bathroom with bath and separate shower cubicle.
- Low maintenance garden.
- Located in the popular village of Minster Lovell within walking distance of a school, shop, pub and bus stop.





Approximate Gross Internal Area = 96.2 sq m / 1,035 sq ft
Garage = 44.0 sq m / 474 sq ft
Total = 140.2 sq m / 1,509 sq ft

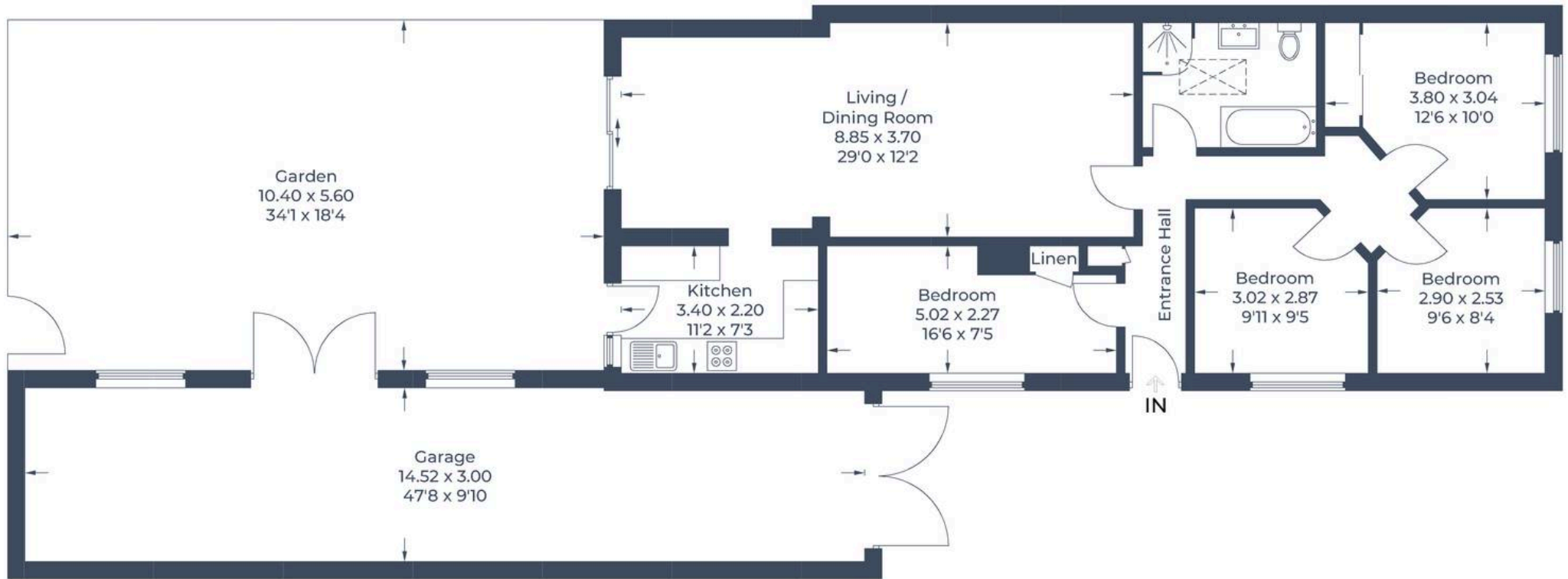


Illustration for identification purposes only,
measurements are approximate, not to scale.
© CJ Property Marketing Produced for Simpsons



Simpsons Witney Branch

4 Langdale Court Witney, Oxfordshire - OX28 6AD

01993 835030 • witney@simpsonsproperty.com • www.simpsonsproperty.com/