



15 Woodcroft, Kennington

Oxford

Simpsons
The Proactive Agent

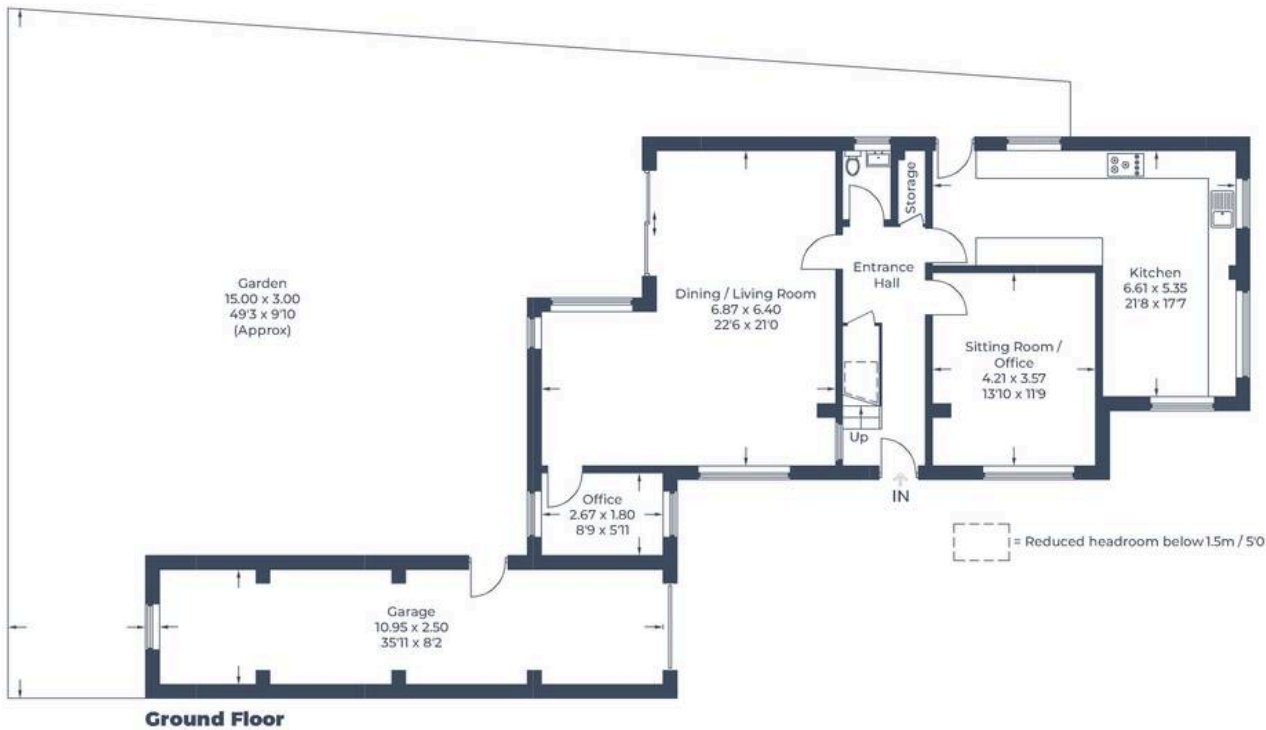
Guide Price **£825,000**



SCAN THE
QR CODE
FOR DETAILS



Approximate Gross Internal Area
 Ground Floor = 95.9 sq m / 1,032 sq ft
 First Floor = 89.3 sq m / 961 sq ft
 Garage = 27.5 sq m / 296 sq ft
 Total = 212.7 sq m / 2,289 sq ft



15 Woodcroft

Kennington, Oxford

Council Tax band: F

Tenure: Freehold

- Guarantee of No Onward Chain
- Modern, high-quality Kitchen with integrated Dishwasher, Washing Machine and Double Oven
- Solar Panels offering a substantial saving on Electricity bills
- Double length, Tandem garage
- Property sits at the end of a 'No thru-traffic' road
- Established front and rear gardens, with the rear garden containing a Summer House
- High quality hardwood flooring throughout the downstairs
- Off street parking for at least 2 vehicles



