



Flat 7, Stone Mason Court, 4 Witney Road



Flat 7

Stone Mason Court

Modern one bedroom ground floor maisonette in this attractive private development of just nine homes in the centre of Long Hanborough.

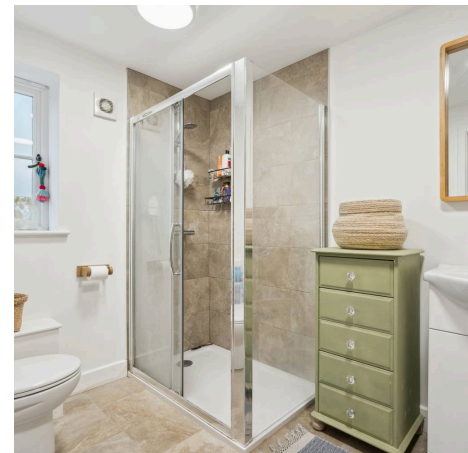
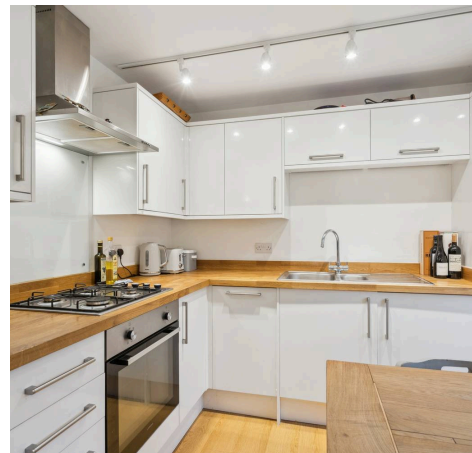
Council Tax band: B

Tenure: Leasehold

EPC Energy Efficiency Rating: B

EPC Environmental Impact Rating: B

- Modern one-bedroom maisonette located on a small development of just nine homes.
- Allocated parking space and additional visitor parking.
- Open plan kitchen/dining/living room with high quality integrated appliances.
- Spacious double bedroom.
- Contemporary bathroom with double length shower.
- Communal garden and bicycle store.



Approximate Gross Internal Area
40.0 sq m / 430 sq ft

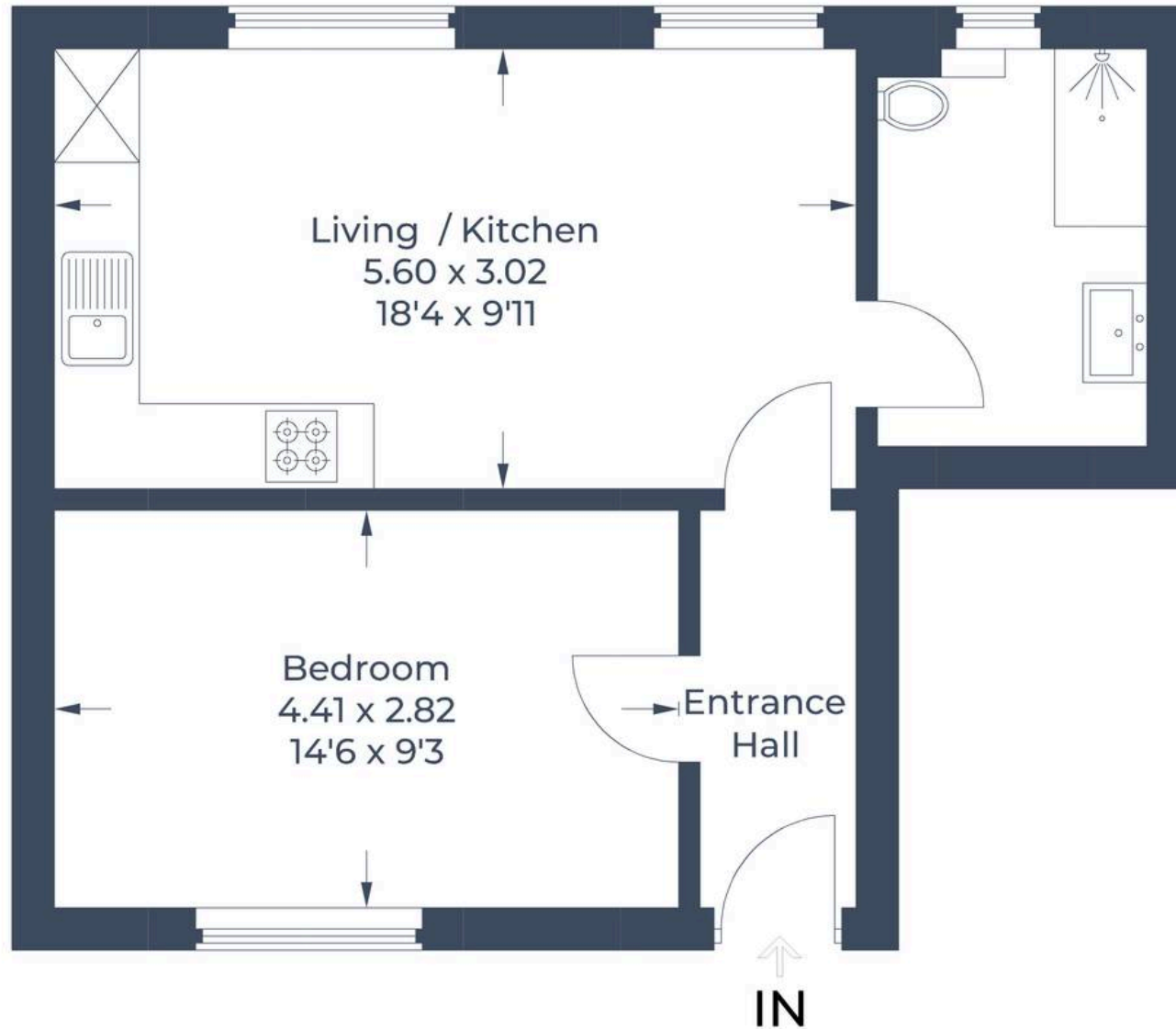


Illustration for identification purposes only,
measurements are approximate, not to scale.
© CJ Property Marketing Produced for Simpsons



Simpsons Witney Branch

4 Langdale Court Witney, Oxfordshire - OX28 6AD

01993 835030 • witney@simpsonsproperty.com • www.simpsonsproperty.com/