



19 Douglas Drive, Grove

Wantage

Simpsons

The Proactive Agent

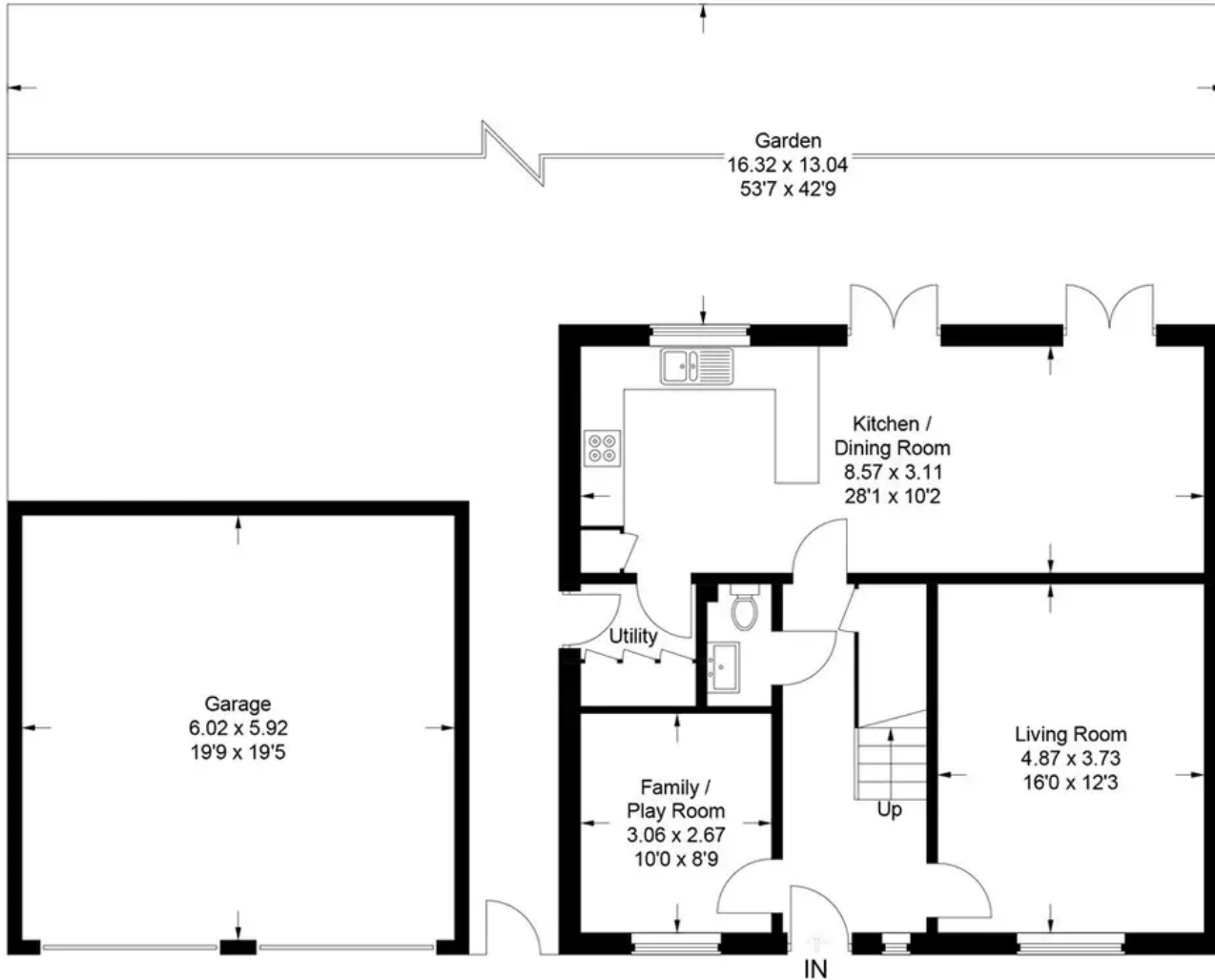
£480,000



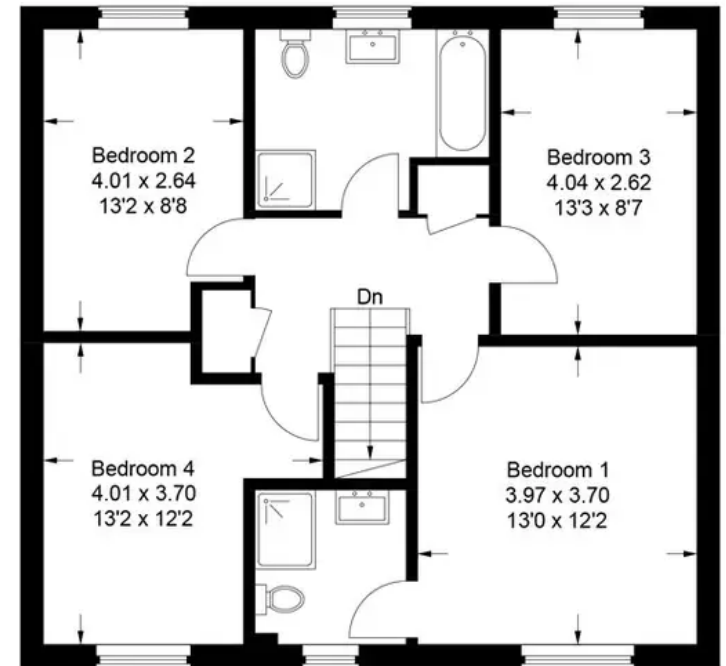
SCAN THE
QR CODE
FOR DETAILS



Approximate Gross Internal Area
 Ground Floor = 71.1 sq m / 765 sq ft
 First Floor = 70.5 sq m / 759 sq ft
 Garage = 35.4 sq m / 381 sq ft
 Total = 177 sq m / 1,905 sq ft



Ground Floor



First Floor

This plan is for layout guidance only. Not drawn to scale unless stated. Windows and door openings are approximate. Whilst every care is taken in the preparation of this plan, please check all dimensions, shapes and compass bearings before making any decisions reliant upon them.

19 Douglas Drive

Grove, Wantage

This very popular Marlborough design family home has the largest garden on the development and is offered to the market fully snagged and under warranty.

Tenure: Freehold

- Off-street parking
- Marlborough design
- Electric car charging point
- Still under warranty and fully snagged
- Two reception rooms
- Double garage
- Large garden
- Less than 2 years old



SCAN THE
QR CODE
TO BOOK
YOUR VIEWING



