



2 Rose Cottage, Sutton



2 Rose Cottage

An attractive three-bedroom cottage located in the delightful village of Sutton. This home sits in a peaceful position off Sutton Lane and offers three spacious bedrooms, two reception rooms, single garage, ample off-road parking and a beautiful mature garden.

Council Tax band: E

Tenure: Freehold

EPC Energy Efficiency Rating: C

EPC Environmental Impact Rating: D

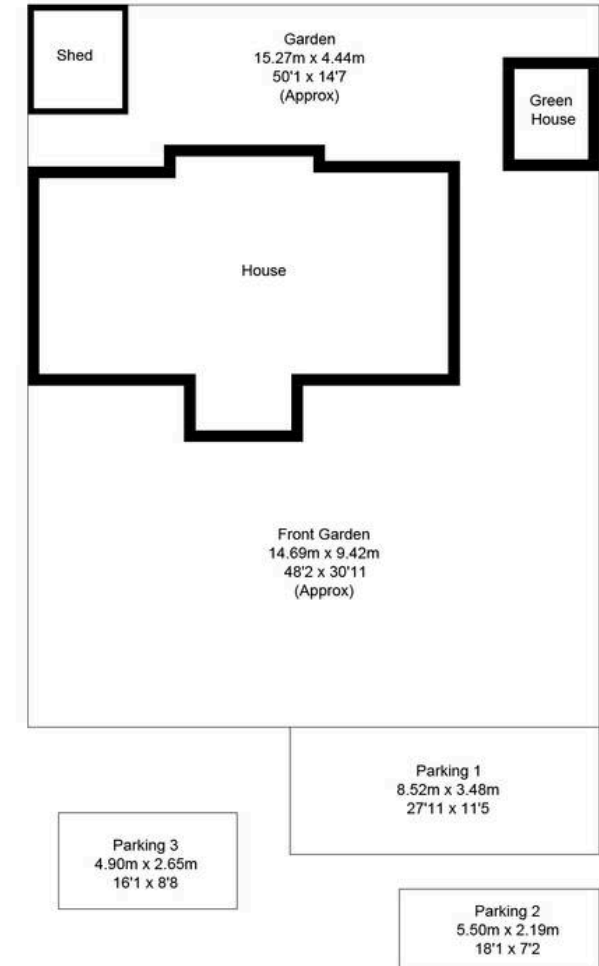
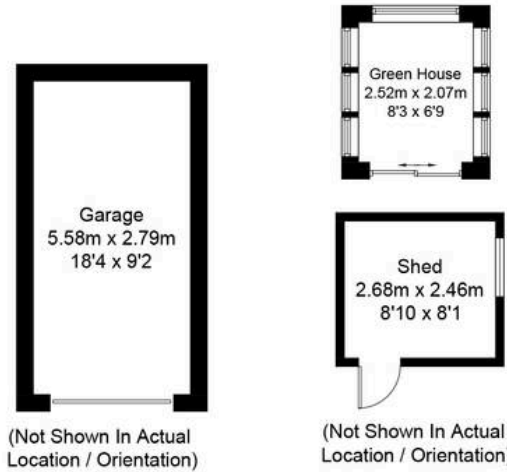
- A beautifully presented semi-detached cottage located in the popular village of Sutton.
- Stunning mature gardens with well-established flowers, trees and shrubs.
- Single garage plus off-street parking.
- Two reception rooms including a sitting room with stove and French doors leading to the peaceful rear garden.
- Semi-rural village with fabulous 'community feel.'
- A short drive to the wider array of amenities on offer in neighbouring Witney and Eynsham.



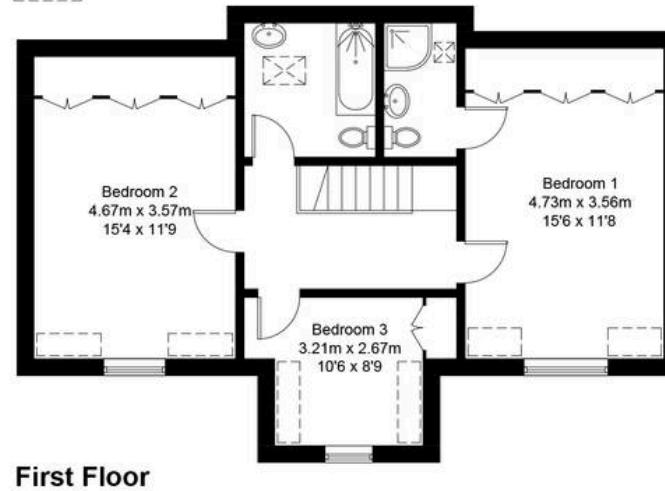
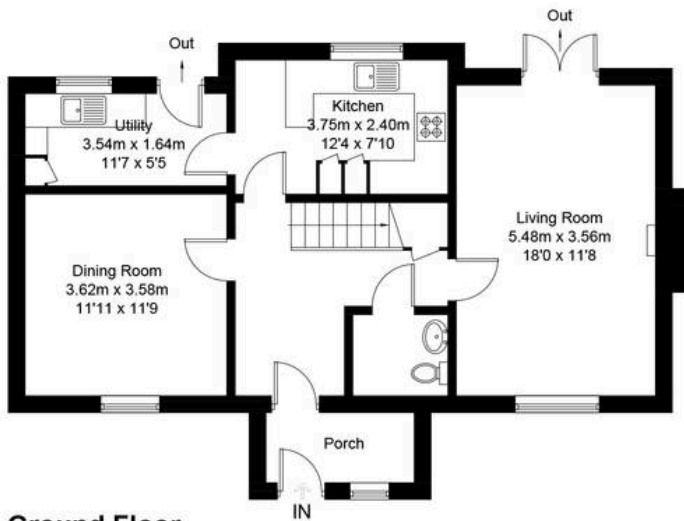


Rose Cottage, OX29

Approximate Gross Internal Area = 136.2 sq m / 1466 sq ft
 Garage = 15.9 sq m / 171 sq ft
 Total = 152.1 sq m / 1637 sq ft
 Shed = 6.6 sq m / 71 sq ft
 Green House = 5.4 sq m / 58 sq ft
 For identification only - Not to scale



= Reduced headroom below 1.5m / 5'0



Ground Floor

First Floor



Simpsons Witney Branch

4 Langdale Court Witney, Oxfordshire - OX28 6AD

01993 835030 • witney@simpsonsproperty.com • www.simpsonsproperty.com/