



**31 Rae Crescent, Wantage**  
Wantage

**Simpsons**  
The Proactive Agent

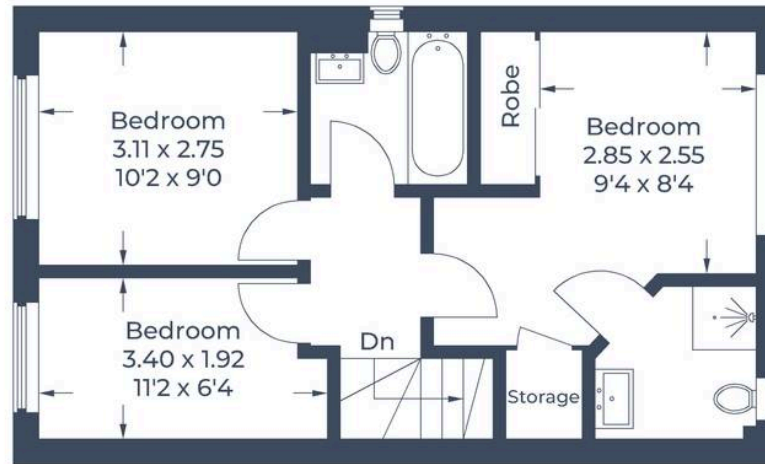
Guide Price **£390,000**



SCAN THE  
QR CODE  
FOR DETAILS



Approximate Gross Internal Area  
Ground Floor = 46.7 sq m / 503 sq ft  
First Floor = 40.6 sq m / 437 sq ft  
Total = 87.3 sq m / 940 sq ft



**First Floor**



**Ground Floor**

Illustration for identification purposes only,  
measurements are approximate, not to scale.

© CJ Property Marketing Produced for Simpsons Wantage



# 31 Rae Crescent

Wantage, Wantage

A beautifully presented three bedroom home on the edge of a popular development in Wantage with no onward chain.

Council Tax band: D

Tenure: Freehold

- No Onward Chain
- Spacious Three Bedroom Semi-Detached Home
- Beautifully Presented Throughout
- Private West Facing Garden



SCAN THE  
QR CODE  
**TO BOOK**  
YOUR VIEWING

