



34 Albermarle Drive, Grove

Wantage

Simpsons
The Proactive Agent

Guide Price **£265,000**



SCAN THE
QR CODE
FOR DETAILS



Albermarle Drive, Wantage, OX12 0NB

Approximate Gross Internal Area = 87.5 sq m / 942 sq ft

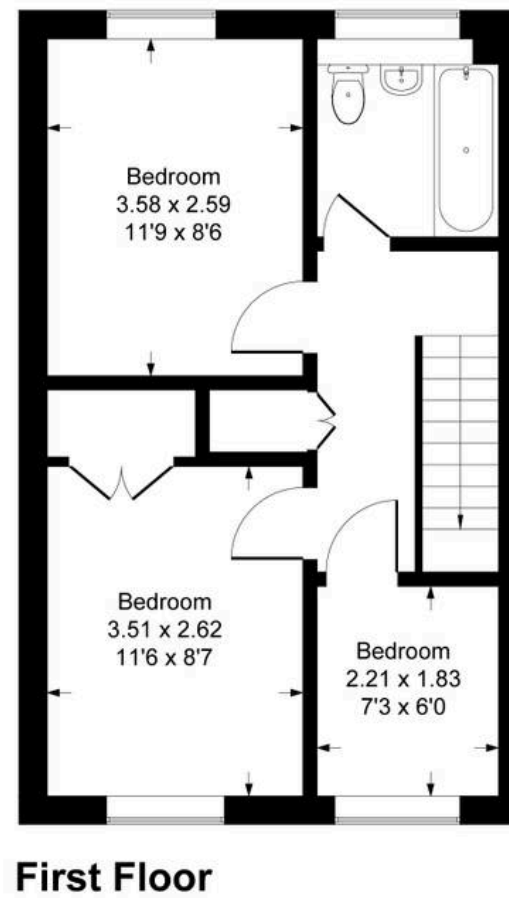


Illustration for identification purpose only, measurements approximate, and not to scale.

34 Albermarle Drive

Grove, Wantage

Council Tax band: C

Tenure: Freehold

- Walking Distance Of Local Amenities
- Quiet Cul-De-Sac Location
- Fully Enclosed Rear Garden
- Garage



