



**74 Ypres Way, ABINGDON**

Abingdon

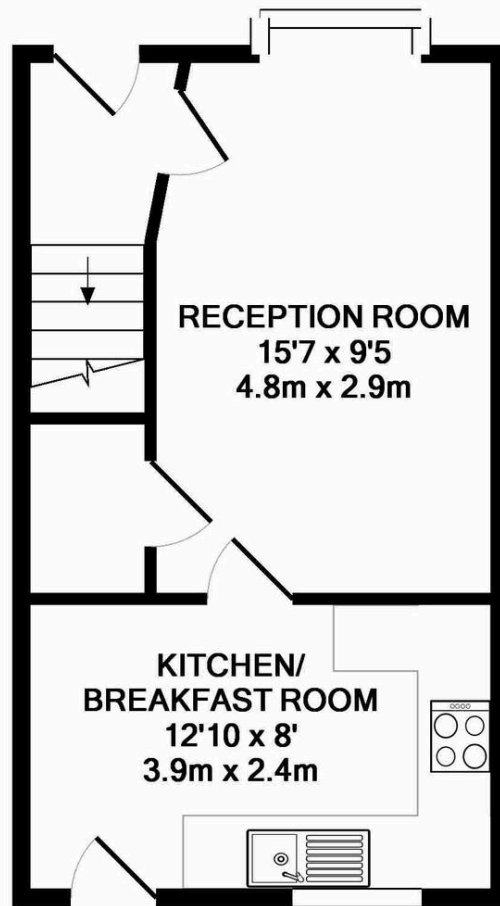
**Simpsons**  
The Pro**active** Agent

£1,400 pcm

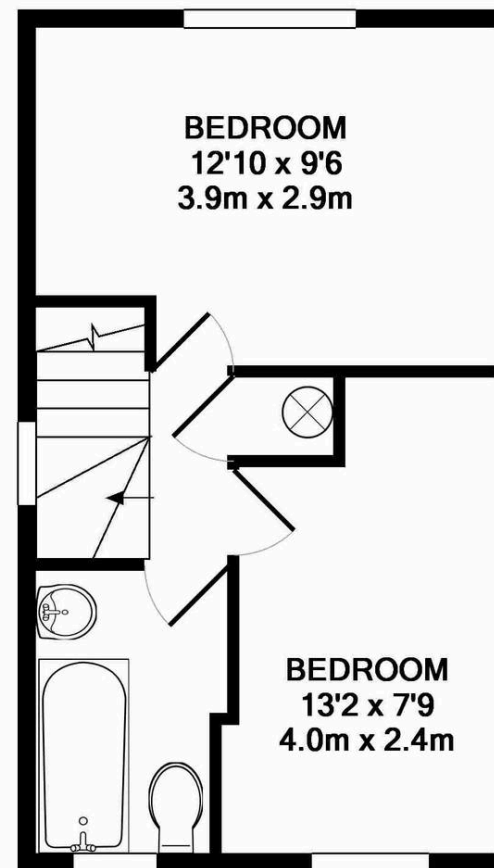


SCAN THE  
QR CODE  
FOR DETAILS





GROUND FLOOR  
APPROX. FLOOR  
AREA 296 SQ.FT.  
(27.5 SQ.M.)



1ST FLOOR  
APPROX. FLOOR  
AREA 292 SQ.FT.  
(27.1 SQ.M.)

TOTAL APPROX. FLOOR AREA 588 SQ.FT. (54.6 SQ.M.)

Whilst every attempt has been made to ensure the accuracy of the floor plan contained here, measurements of doors, windows, rooms and any other items are approximate and no responsibility is taken for any error, omission, or mis-statement. This plan is for illustrative purposes only and should be used as such by any prospective purchaser. The services, systems and appliances shown have not been tested and no guarantee as to their operability or efficiency can be given

Made with Metropix ©2018





# 74 Ypres Way

ABINGDON, Abingdon

This end of terraced house is situated in a pleasant cul de sac North Abingdon location.

Council Tax band: C

Tenure: Freehold



SCAN THE  
QR CODE  
**TO BOOK**  
YOUR VIEWING



