



35 Thorney Leys, Witney



35 Thorney Leys

Witney, Witney

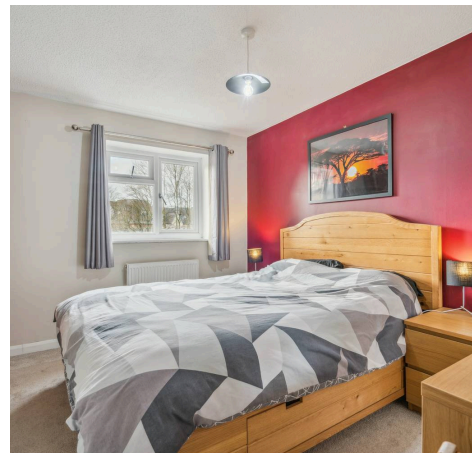
Council Tax band: C

Tenure: Freehold

EPC Energy Efficiency Rating: C

EPC Environmental Impact Rating: C

- A well-presented two-bedroom terraced home located in a peaceful cul-de-sac position on the popular Thorney Leys development.
- Allocated parking for two vehicles.
- Recently improved kitchen.
- Low maintenance garden.
- Within walking distance of local amenities and nearby public transport links.
- Two spacious bedrooms, main bedroom with built in storage.





Approximate Gross Internal Area (Including Void)

Ground Floor = 27.2 sq m / 293 sq ft

First Floor = 26.6 sq m / 286 sq ft

Total = 53.8 sq m / 579 sq ft

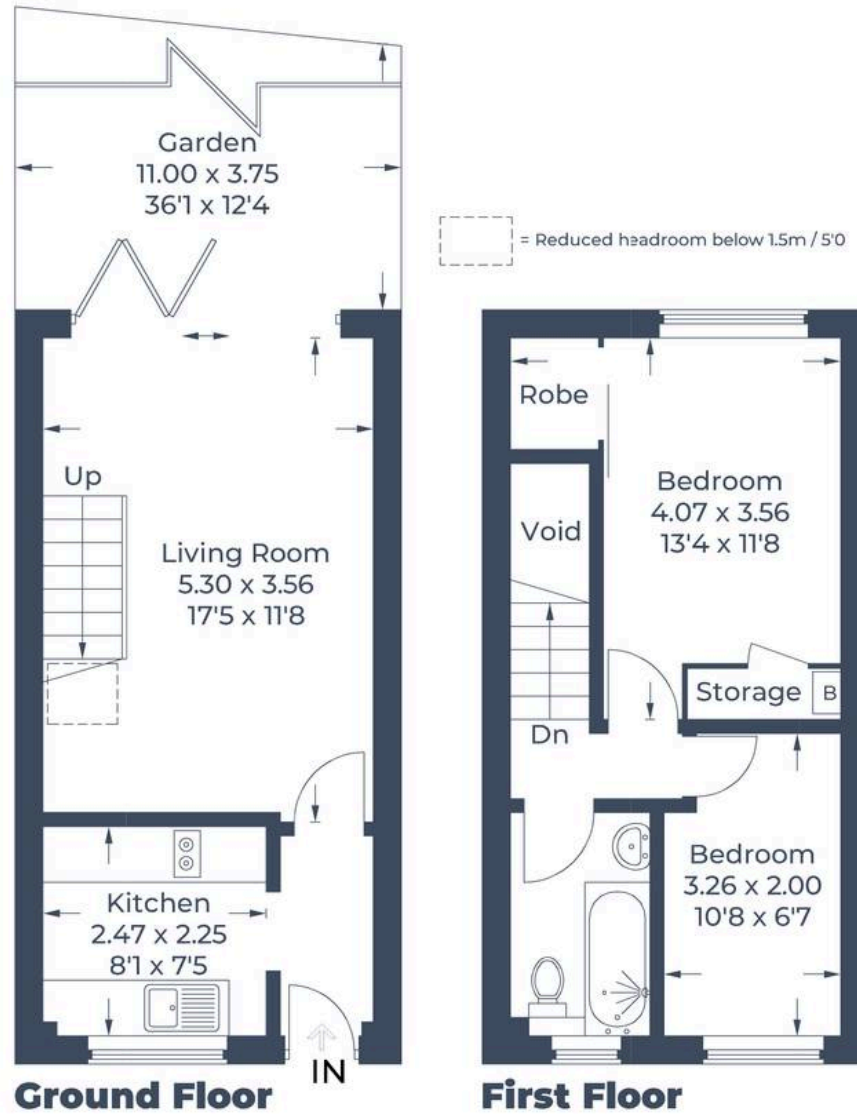


Illustration for identification purposes only,
measurements are approximate, not to scale.

© CJ Property Marketing Produced for Simpsons



Simpsons Witney Branch

4 Langdale Court Witney, Oxfordshire - OX28 6AD

01993 835030 • witney@simpsonsproperty.com • www.simpsonsproperty.com/