



102a Whitehorns Way, Drayton
Abingdon

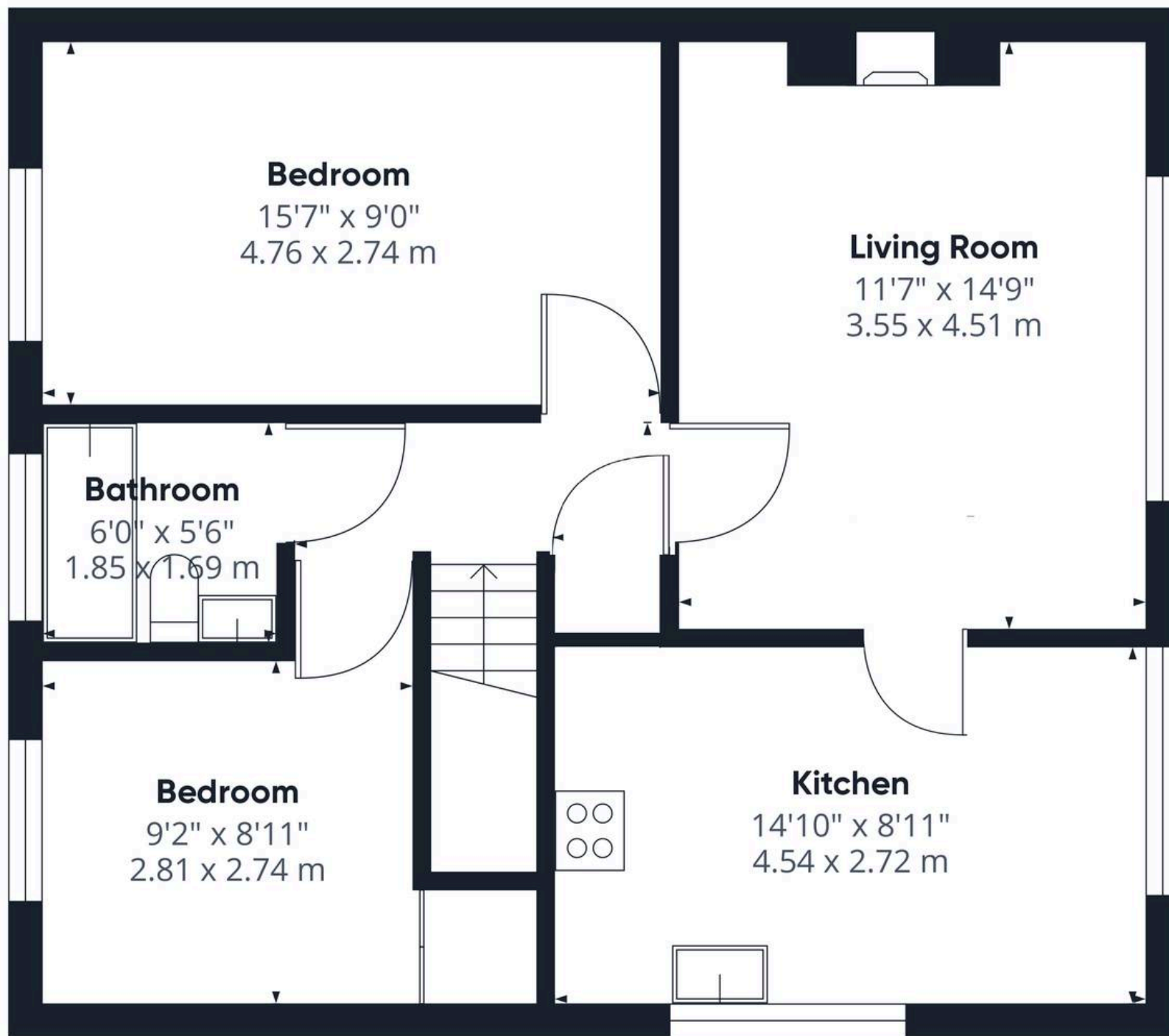
Simpsons
The Proactive Agent

Offers in excess of £230,000



SCAN THE
QR CODE
FOR DETAILS





Floor 1

Approximate total area⁽¹⁾

626.13 ft²

58.17 m²

(1) Excluding balconies and terraces

While every attempt has been made to ensure accuracy, all measurements are approximate, not to scale. This floor plan is for illustrative purposes only.

Calculations are based on RICS IPMS 3C standard.

GIRAFFE360

102a Whitehorns Way

Drayton, Abingdon

For sale with no onward chain, a well proportioned first floor, two double bedroom apartment, located in a no through road in the village of Drayton.

Council Tax band: B

Tenure: Leasehold

- A two double bedroom first floor apartment benefitting from a private rear garden.
- Refitted, dual aspect open plan kitchen/diner.
- Modern, white bathroom suite.
- 937 year leasehold term, no service charge to pay. Ground rent £10 per year.
- Gas central heating and UPVC double glazing.
- No onward chain.

