



355a Thorney Leys, Witney



355a Thorney Leys

A beautifully presented two bedroom semi-detached home that has been much improved by the current owners located on the popular Thorney Leys development.

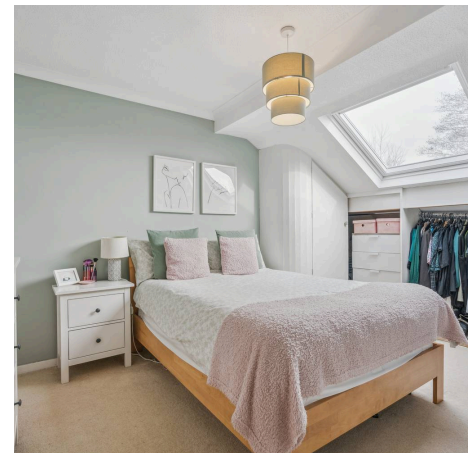
Council Tax band: C

Tenure: Freehold

EPC Energy Efficiency Rating: C


EPC Environmental Impact Rating: D

- A beautifully presented two bedroom semi-detached home located on the popular Thorney Leys development.
- Allocated parking for two vehicles.
- Bright and airy open plan sitting/dining room with doors leading to the garden.
- Low maintenance garden with patio and gravel.
- Two double bedrooms both with built in storage.
- Stylish bathroom with bath and shower.



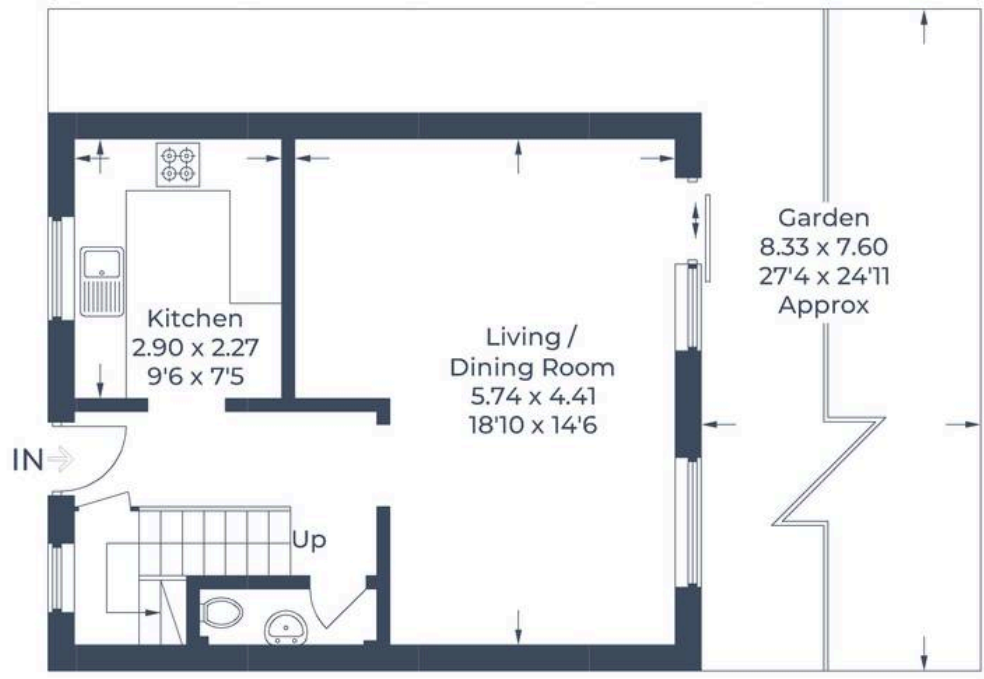
Approximate Gross Internal Area
 Ground Floor = 40.9 sq m / 440 sq ft
 First Floor = 35.7 sq m / 384 sq ft
 Total = 76.6 sq m / 824 sq ft



 = Reduced headroom below 1.5m / 5'0



(Not Shown In Actual Location / Orientation)



Ground Floor



First Floor



Simpsons Witney Branch

4 Langdale Court Witney, Oxfordshire - OX28 6AD

01993 835030 • witney@simpsonsproperty.com • www.simpsonsproperty.com/