



4 Woodlands, Carterton



4 Woodlands

A much improved three bedroom end of terrace home located in a peaceful cul-de-sac position on the popular Shilton Park development within walking distance of all local amenities.

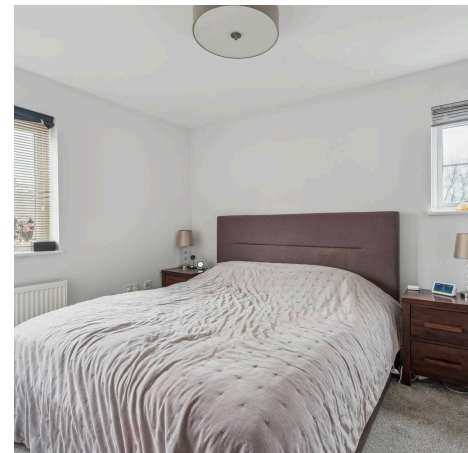
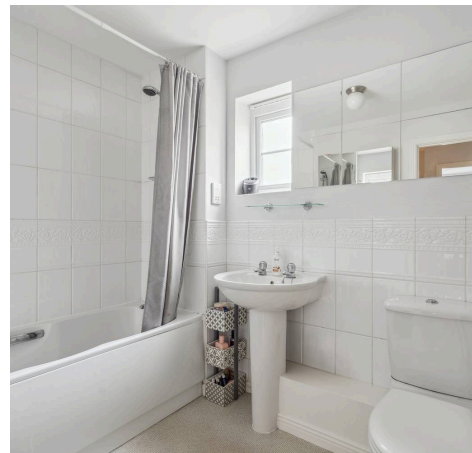
Council Tax band: D

Tenure: Freehold

EPC Energy Efficiency Rating: C

EPC Environmental Impact Rating:

- A much improved three bedroom end of terrace home situated in a peaceful cul-de-sac location on the popular Shilton Park development.
- Three bedrooms, all with built in storage space.
- Master bedroom with ensuite.
- Easily accessible garage and off-street parking.
- Sitting room with feature fire.
- Dining room with doors leading to the garden.



Approximate Gross Internal Area
Ground Floor = 47.6 sq m / 512 sq ft
First Floor = 47.1 sq m / 507 sq ft
Garage = 13.0 sq m / 140 sq ft
Total = 107.7 sq m / 1,159 sq ft



Illustration for identification purposes only,
measurements are approximate, not to scale.

© CJ Property Marketing Produced for Simpsons



Simpsons Witney Branch

4 Langdale Court Witney, Oxfordshire - OX28 6AD

01993 835030 • witney@simpsonsproperty.com • www.simpsonsproperty.com/