



185 Queen Emmas Dyke, Witney - Offers in excess of £260,000

185 Queen Emmas Dyke

Brought to market with the certainty of no onward chain is this three-bedroom mid terrace property in need of renovation.

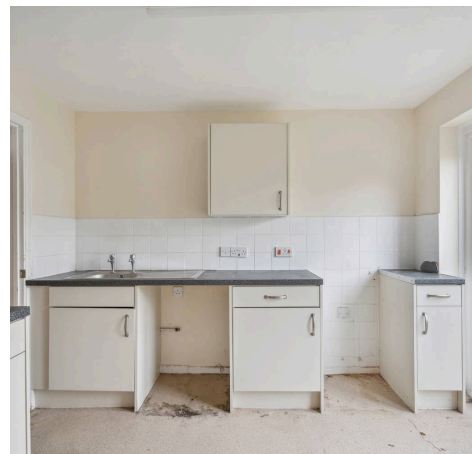
Council Tax band: C

Tenure: Freehold

EPC Energy Efficiency Rating: C

EPC Environmental Impact Rating: C

- Brought to market with the certainty of no onward chain.
- Three bedrooms.
- Central Witney location within walking distance of amenities.
- In need of renovation.
- Mid terrace house.
- Garage and off-street parking.



Approximate Gross Internal Area
Ground Floor = 39.2 sq m / 422 sq ft
First Floor = 37.1 sq m / 399 sq ft
Total = 76.3 sq m / 821 sq ft

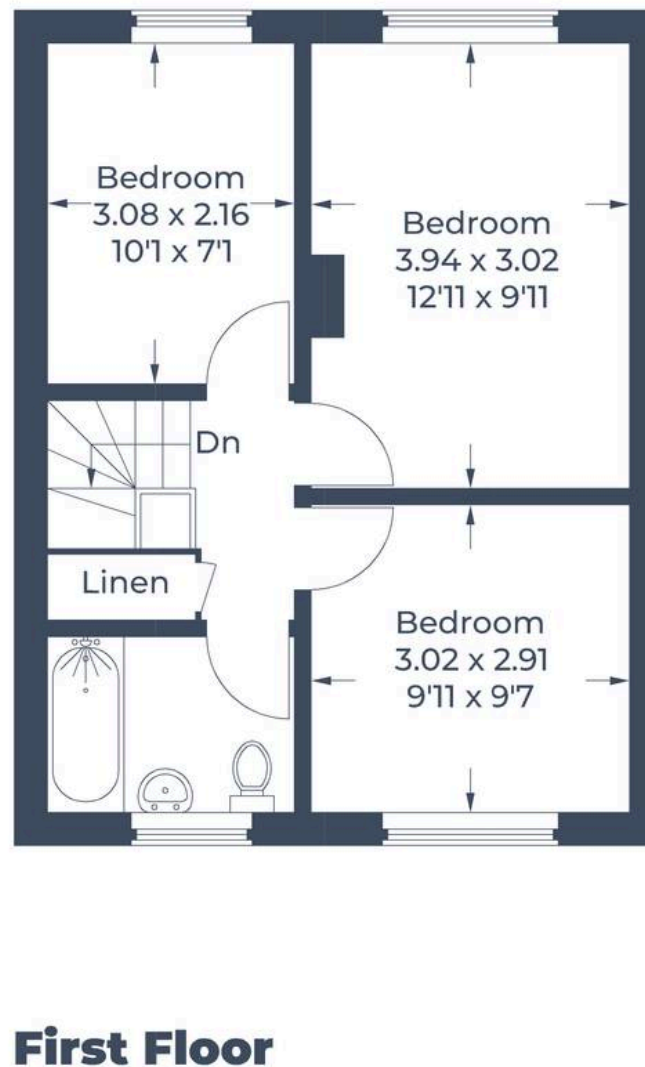
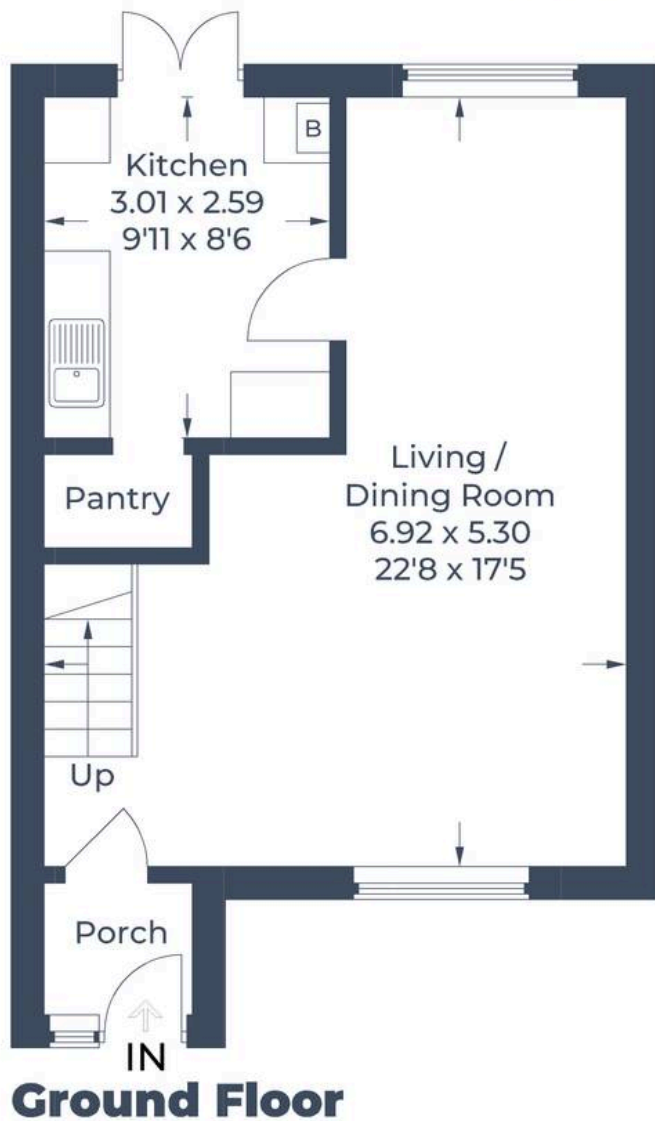


Illustration for identification purposes only,
measurements are approximate, not to scale.
© CJ Property Marketing Produced for Simpsons



Simpsons Witney Branch

4 Langdale Court Witney, Oxfordshire - OX28 6AD

01993 835030 • witney@simpsonsproperty.com • www.simpsonsproperty.com/