



70 Colwell Drive, Witney



70 Colwell Drive

Brought to the market with the certainty of no onward chain is this fabulous three bedroom semi-detached home which has been much improved by the current owner.

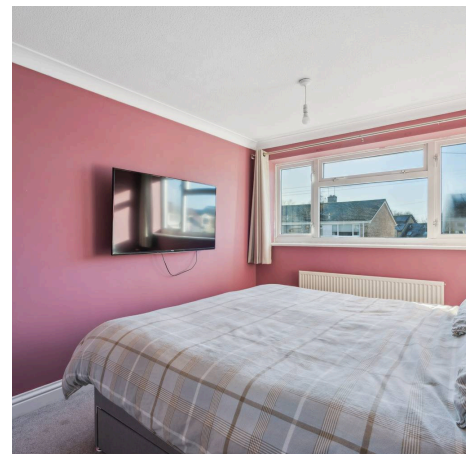
Council Tax band: C

Tenure: Freehold

EPC Energy Efficiency Rating: D

EPC Environmental Impact Rating: E

- A much improved and beautifully presented three-bedroom semi-detached home located on the popular Burwell Meadow development.
- Open plan kitchen/dining room with high quality integrated appliances and breakfast bar.
- Sitting room with bi-fold doors leading out to the rear garden.
- Contemporary bathroom with bath and separate shower cubicle.
- Three bedrooms, two with build in wardrobes.
- Garage, summer house and off-street parking.



Approximate Gross Internal Area
 Ground Floor = 41.9 sq m / 451 sq ft
 First Floor = 41.3 sq m / 444 sq ft
 Garage / Summer House = 22.9 sq m / 246 sq ft
 Total = 106.1 sq m / 1,141 sq ft

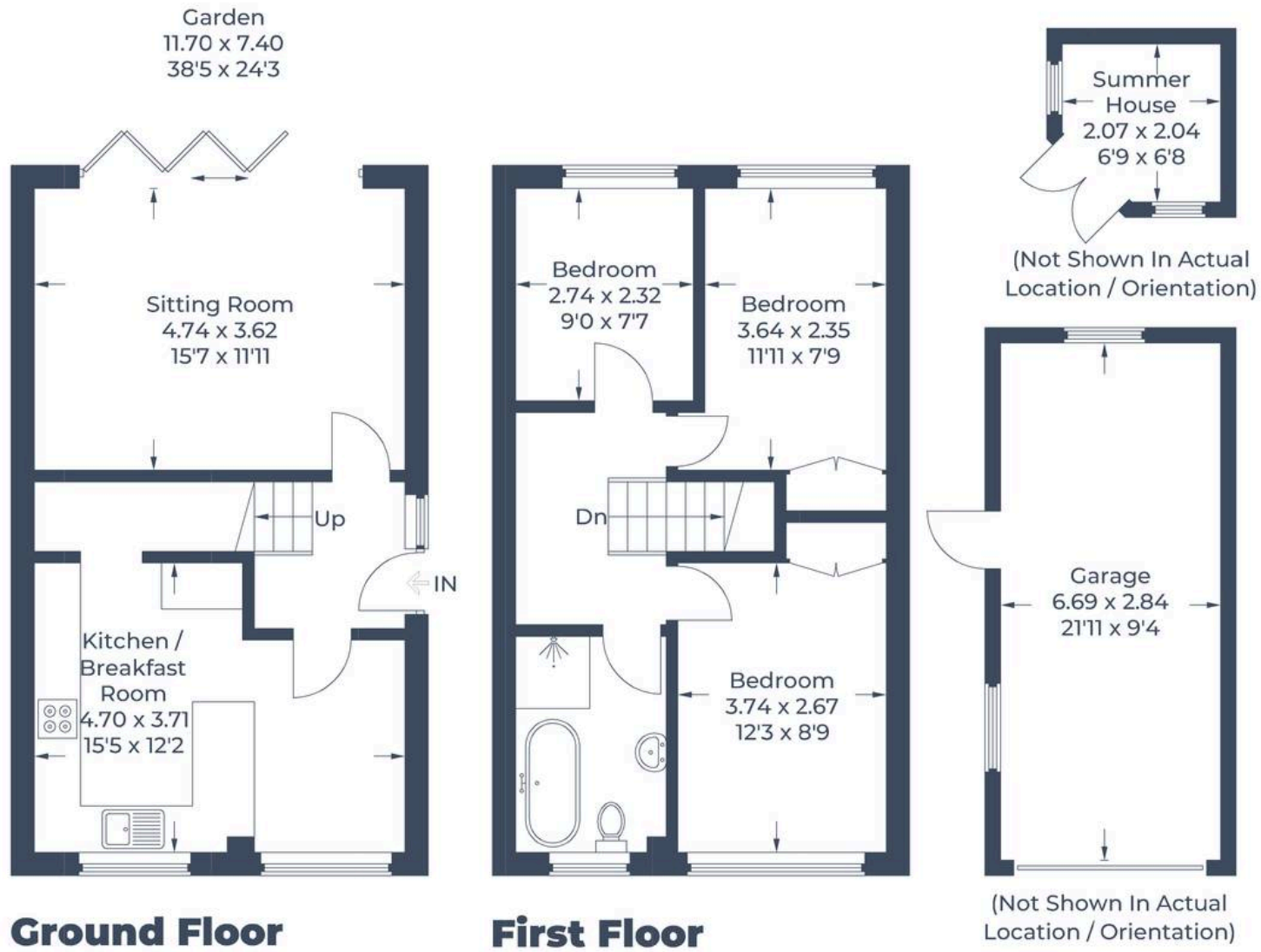


Illustration for identification purposes only,
 measurements are approximate, not to scale.

© CJ Property Marketing



Simpsons Witney Branch

4 Langdale Court Witney, Oxfordshire - OX28 6AD

01993 835030 • witney@simpsonsproperty.com • www.simpsonsproperty.com/